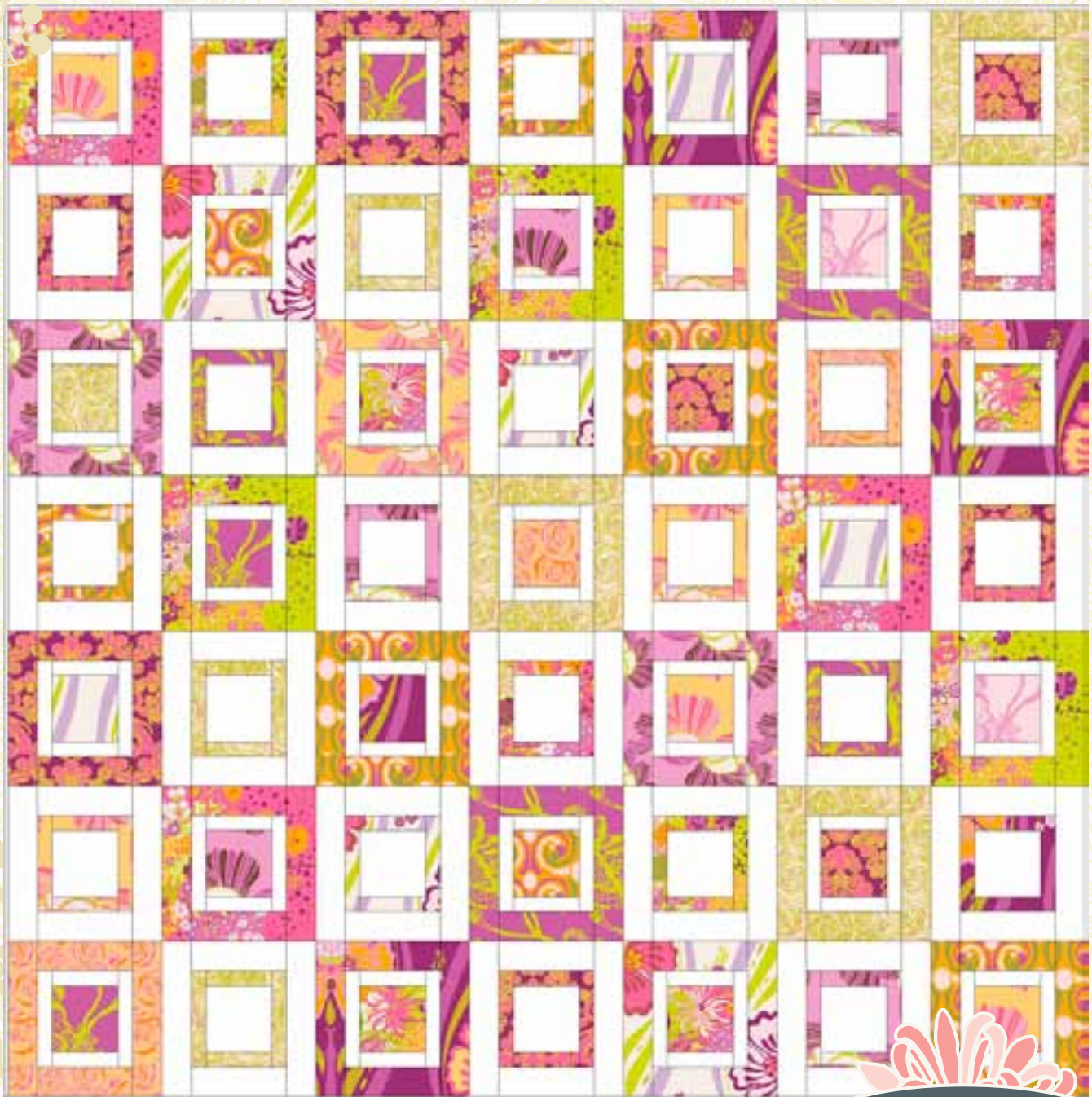


Parisian windows

{quilt}



Art Gallery
FABRICS

FREE PROJECT SHEET

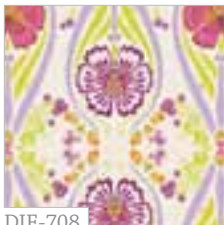
DESIGNED WITH LOVE BY Pat Bravo

FEATURING DREAMING IN FRENCH
& PURE ELEMENTS COLLECTIONS

Parisian windows

{quilt}

Dreaming in FRENCH



DIF-708
Light Femme Fatale



DIF-707
Fruity Praline



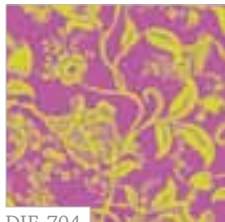
DIF-808
Dark Femme Fatale



DIF-807
Lime Praline



DIF-706
Orchid Blooms



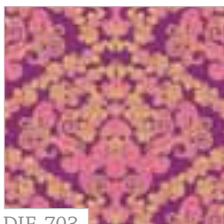
DIF-704
Berry Coquette



DIF-806
Cream Blooms



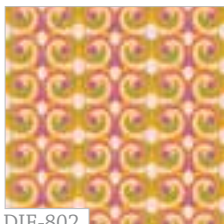
DIF-804
Pink Coquette



DIF-703
Fuchsia Mademoiselle



DIF-701
Fresh Romance

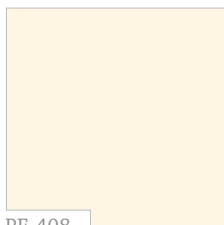


DIF-802
Soft French Curls

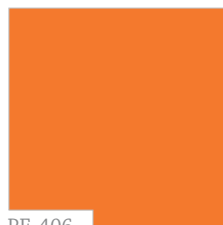


DIF-801
Blush Romance

PURE
Elements



PE-408
Linen White



PE-406
Burnt Orange



PE-404
Festival Fuchsia



QUILT DESIGNED
WITH LOVE BY PAT BRAVO

Parisian windows

Finished Size: 74" by 74"
Block Size: 10½" by 10½"
Number of blocks: 49

FABRIC REQUIREMENTS

½ yard **each** of (12) assorted print fabrics
Dreaming in French Collection

¾ yards of **PE-408** (solid white)
Pure Elements Collection

Backing MA-4304
2 yd of **PE-404**
2 yd of **PE-406**
1 yd of **DIF-802**

Binding (included) **PE-408**



CUTTING DIRECTIONS

This quilt is made with one "LOG CABIN" block in two types of fabric combinations:

Combination 1 has two prints and one solid
Combination 2 has two solids and one print
(¼" seam allowances are included)

FOR ALL BLOCKS **Combination 1** **CUT** (25 blocks total)

Fifty (50) 11" × 2½" rectangles from assorted prints
Fifty (50) 7" × 2½" rectangles from assorted prints
Fifty (50) 7" × 1½" rectangles from solid white
Fifty (50) 5" × 1½" rectangles from solid white
Twenty-five (25) 5" squares from assorted prints

FOR ALL BLOCKS **Combination 2** **CUT** (24 blocks total)

Fifty (50) 11" × 2½" rectangles from solid white
Fifty (50) 7" × 2½" rectangles from solid white
Fifty (50) 7" × 1½" rectangles from assorted prints
Fifty (50) 5" × 1½" rectangles from assorted prints
Twenty-five (25) 5" squares from solid white



BLOCK CONSTRUCTION

All 49 blocks are constructed the same way
(sew fabrics right sides together and with a ¼" seam allowance)

The fabric combinations (**PRINT** fabrics) are open to your personal selection. The cover picture is only a suggestion, so have fun combining prints!

To construct each of the blocks **Combination 1**:

- Position one 5" × 1½" **SOLID** strip on top of the one 5" **PRINT** square aligning edges (right sides together), and stitch along edge using ¼" seam allowance. Press the seam allowances to the outside. Add the next 5" × 1½" **SOLID** strip in the same way but on the opposite side.
(DIAGRAM 1)

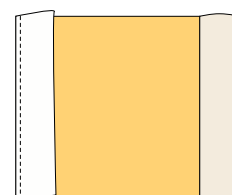


DIAGRAM 1

- Position one 7" × 1½" **SOLID** strip on top of one 7" finished side aligning edges (right sides together), and stitch along edge using ¼" seam allowance. Press the seam allowances to the outside. Add the next 7" × 1½" **SOLID** strip in the same way but on the opposite side. Press again.
(DIAGRAM 2)

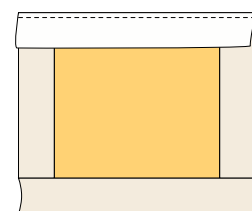


DIAGRAM 2

- Position one 7" × 2½" **PRINT** strip on top of one 7" finished side aligning edges (right sides together), and stitch along edge using ¼" seam allowance. Press the seam allowances to the outside. Add the next 7" × 2½" **PRINT** strip in the same way but on the opposite side. Press again.
(DIAGRAM 3)

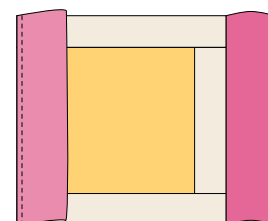


DIAGRAM 3

- Position one 11" × 2½" **PRINT** strip on top of one 11" finished side aligning edges (right sides together), and stitch along edge using ¼" seam allowance. Press the seam allowances to the outside. Add the next 11" × 2½" **PRINT** strip in the same way but on the opposite side. Press again.
(DIAGRAM 4)

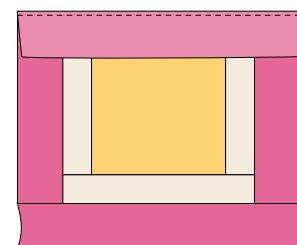


DIAGRAM 4

- Make in the same way, another 24 blocks.

To construct each of the blocks **Combination 2**:

- Position one 5" by 1½" **PRINT** strip on top of the one 5" **SOLID** square aligning edges (right sides together), and stitch along edge using ¼" seam allowance. Press the seam allowances to the outside. Add the next 5" by 1½" **PRINT** strip in the same way but on the opposite side. (DIAGRAM 1)

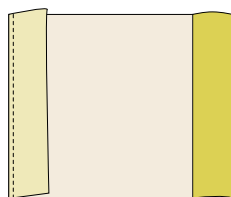


DIAGRAM 1

- Position one 7" by 1½" **PRINT** strip on top of one 7" finished side aligning edges (right sides together), and stitch along edge using ¼" seam allowance. Press the seam allowances to the outside. Add the next 7" by 1½" **PRINT** strip in the same way but on the opposite side. Press again. (DIAGRAM 2)

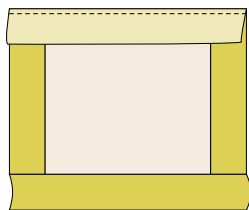


DIAGRAM 2

- Position one 7" by 2½" **SOLID** strip on top of one 7" finished side aligning edges (right sides together), and stitch along edge using ¼" seam allowance. Press the seam allowances to the outside. Add the next 7" by 2½" **SOLID** strip in the same way but on the opposite side. Press again. (DIAGRAM 3)

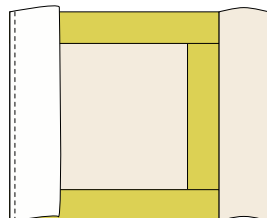


DIAGRAM 3

- Position one 11" by 2½" **SOLID** strip on top of one 11" finished side aligning edges (right sides together), and stitch along edge using ¼" seam allowance. Press the seam allowances to the outside. Add the next 11" by 2½" **SOLID** strip in the same way but on the opposite side. Press again. (DIAGRAM 4)

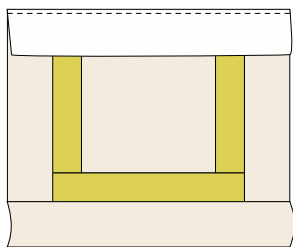


DIAGRAM 4

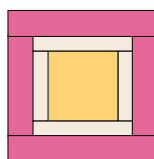
- Make in the same way, another 23 blocks.

QUILT TOP ASSEMBLY

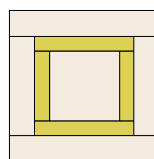
(sew fabrics right sides together and with a ¼" seam allowance)

- Begin sewing the first row. Alternate blocks between fabrics **combination 1** and fabrics **combination 2**. Press seams open. **(Follow the front cover picture for block placement).**
- Sew the second row. Alternate blocks between fabrics **combination 1** and fabrics **combination 2**. **(Follow the front cover picture for block placement).**
- Keep constructing the rows and Press seams open. **(Follow the front cover picture for block placement).**
- After you finish, sew the rows together **(Follow the front cover picture for block placement)**. Take much care to match seam intersections between each block (lock them with pins if necessary). Continue joining all the rows. Press all seams toward the same direction.
- Press the WHOLE TOP with a hot steam iron.

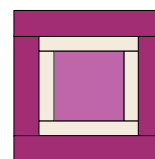
ALTERNATE BLOCKS



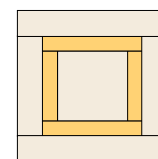
Combination 1



Combination 2



Combination 1



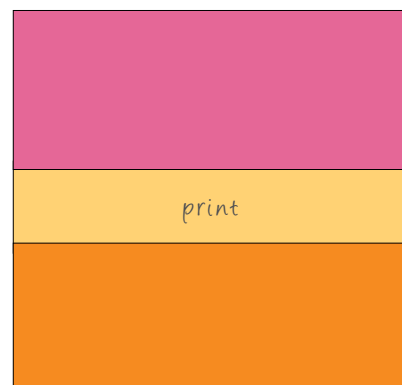
Combination 2

QUILT BACKING ASSEMBLY

(sew fabrics right sides together and with a ¼" seam allowance)

- Cut two (2) 36" × 44" pieces of fabric **PE-404**. Piece them together on the short side.
- Cut two (2) 36" × 44" pieces of fabric **PE-406**. Piece them together on the short side.
- Cut two (2) 18" × 44" pieces of fabric **DIF-802**. Piece them together on the short side.
- Now join the three pieces of fabric together on the long side, with the **PRINT** fabric in the middle.
- Press seams open.

BACKING





QUILT ASSEMBLY

(sew fabrics right sides together and with a 1/4" seam allowance)

- Place BACKING FABRIC on a large flat surface **wrong** side up. Stretch it with masking tape against that surface.
- Place BATTING on top of backing fabric.
- Place TOP on top of the batting with **right** side facing up. Smooth away wrinkles using your hands.
- Pin all layers together and baste with basting thread, using long stitches. You can also use safety pins to join the layers.
- Machine or hand quilt starting at the center.



BINDING

(sew right sides together)

- Cut enough strips 1 1/2" wide by the width of the SOLID fabric to make a final strip 306" long. Start sewing the binding strip in the middle of one of the sides of the quilt, placing the strip right side down and leaving an approximated 5" tail. Sew with 1/4" seam allowance (using straight stitch), aligning the strip's raw edge with the quilt top's raw edge.
- Stop stitching 1/4" before the end of the quilt (DIAGRAM B1). Clip the threads. Remove the quilt from under the machine presser foot. Fold the strip in a motion of 45° and upward, pressing with your fingers (DIAGRAM B2). Hold this fold with your finger, bring the strip down in line with the next edge, making a horizontal fold that aligns with the top edge of the quilt (DIAGRAM B3). Start sewing at 1/4" of the border, stitching all the layers. Do the same in the four corners of the quilt.
- Stop stitching before you reach the last 5 or 6 inches. Cut the threads and remove the quilt from under the machine presser foot. Lay the loose ends of the binding flat along the quilt edge, folding the ends back on themselves where they meet. Press them together to form a crease. Using this crease as the stitching line, sew the two open ends of the binding with right sides together (you can help yourself marking with a pencil if the crease is difficult to see).
- Trim seam to 1/4" and press open. Complete the sewing. Turn binding to back of the quilt, turn raw edge inside and stitch by hand using blind stitch.



To see more patterns, fabrics and lots of inspiration visit:

patbravo.com



Feel the difference

For wholesale visit:

artgalleryfabrics.com

NOTE: While all possible care has been taken to ensure the accuracy of this pattern, we are not responsible for printing errors or the way in which individual work varies. Please read instructions carefully before starting the construction of this quilt. If desired, wash and iron your fabrics before starting to cut.

© 2011 Courtesy of Art Gallery Quilts LLC. All Rights Reserved.

DIAGRAM B1

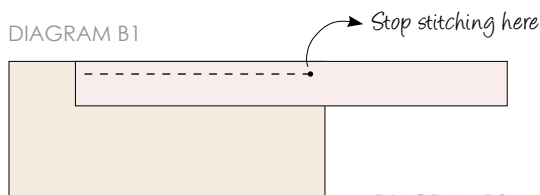


DIAGRAM B2

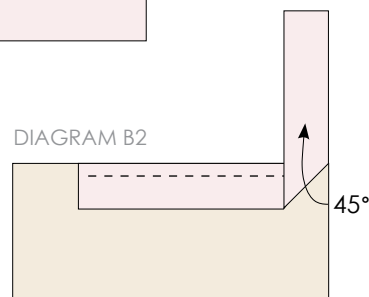
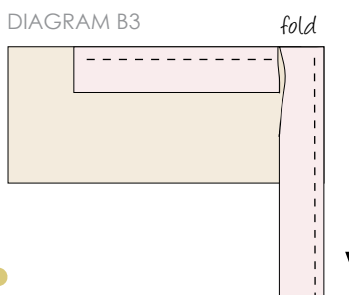


DIAGRAM B3



CONGRATULATIONS!

