

Renew Me

Featuring "REVIVE" Collection



RE-8721



RE-8724



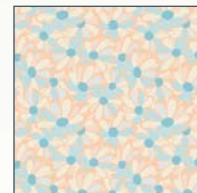
RE-8723



RE-8725



RE-8722



RE-8726



RE-8727



RE-8728

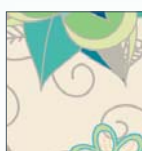


RE-8729



Designed by Patricia Bravo - 70" by 81"

Free Project Sheet



RE-7721



RE-7724



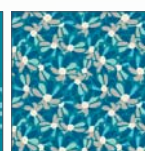
RE-7723



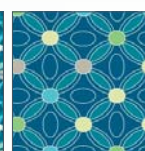
RE-7725



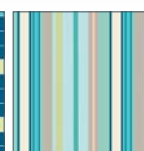
RE-7722



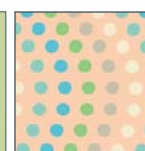
RE-7726



RE-7727



RE-7728



RE-7729



© 2008 Courtesy of Art Gallery Quilts LLC. All rights reserved.

3804 N 29th Avenue - Hollywood, FL 33020 TEL: (888) 420-5399 FAX: (425) 799-6103

for more fabrics and projects visit our website www.artgalleryfabrics.com

Renew Me

Finished Size: 70" x 81"

Block Size: 8"

Quilt designed by Patricia Bravo for *Art Gallery* FABRICS

Fabric Requirements: "REVIVE" COLLECTION

Fabric **A**: 3/8 yd. of RE-8726
Fabric **B**: 3/4 yd. of RE-8723
Fabric **C**: 3/4 yd. of RE-8721
Fabric **D**: 3/8 yd. of RE-7724

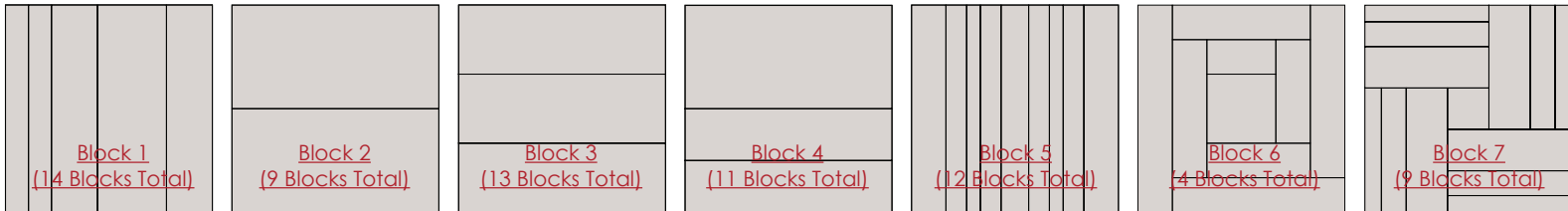
Fabric **E**: 5/8 yd. of RE-7729
Fabric **F**: 1/4 yd. of RE-7725
Fabric **G**: 7/8 yd. of RE-8727
Fabric **H**: 3/8 yd. of RE-8724

Fabric **I**: 1/4 yd. of RE-7728
Fabric **J**: 1 1/8 yd. of RE-8729
Fabric **K**: 3/8 yd. of RE-8722
Fabric **L**: 1/4 yd. of RE-7723

Fabric **M**: 3/8 yd. of RE-7727
Fabric **N**: 1/4 yd. of RE-7726
Fabric **O**: 1/4 yd. of RE-7722
Fabric **P**: 1/2 yd. of RE-8728
Fabric **Q**: 1/4 yd. of RE-7721
Fabric **R**: 1 1/8 yd. of RE-8725

The estimate for the fabrics of the borders and binding assumes that long strips are pieced. All seam allowances are 1/4".
Please read all directions before beginning and press carefully after each seam.

Cutting Directions: This quilt is made from 7 blocks in different fabric combinations:



For EACH block 1 cut: (combination fabrics C-K-B-J-A: 14 blocks.)

One (1) 1 3/8" by 8 1/2" strip from fabric **A**.
One (1) 1 3/8" by 8 1/2" strip from fabric **J**.
One (1) 2 1/4" by 8 1/2" strip from fabric **B**.
One (1) 2 1/4" by 8 1/2" strip from fabric **C**.
One (1) 3 1/8" by 8 1/2" strip from fabric **K**.

For EACH block 4 cut: (combination fabrics E-N-F: 5 blocks.)

One (1) 4 1/2" by 8 1/2" strip from fabric **E**.
One (1) 2 1/2" by 8 1/2" strip from fabric **N**.
One (1) 2 1/2" by 8 1/2" strip from fabric **F**.

For EACH block 4 cut: (combination fabrics J-A-G: 6 blocks.)

One (1) 4 1/2" by 8 1/2" strip from fabric **J**.
One (1) 2 1/2" by 8 1/2" strip from fabric **A**.
One (1) 2 1/2" by 8 1/2" strip from fabric **G**.

For EACH block 6 cut: (combination fabrics H-B-R-C-G: 4 blocks.)

One (1) 1 7/8" by 8 1/2" strip from fabric **G**.
One (1) 1 7/8" by 5 7/8" strip from fabric **H**.
One (1) 1 7/8" by 5 7/8" strip from fabric **C**.
One (1) 1 7/8" by 7 1/8" strip from fabric **H**.
One (1) 1 7/8" by 7 1/8" strip from fabric **G**.
One (1) 1 7/8" by 4 1/2" strip from fabric **B**.
One (1) 1 7/8" by 4 1/2" strip from fabric **C**.
One (1) 1 7/8" by 3 1/8" strip from fabric **B**.
One (1) 3 1/8" square from fabric **R**.

For EACH block 2 cut: (combination fabrics C-B: 5 blocks.)

One (1) 4 1/2" by 8 1/2" strip from fabric **C**.
One (1) 4 1/2" by 8 1/2" strip from fabric **B**.

For EACH block 2 cut: (combination fabrics L-Q: 4 blocks.)

One (1) 4 1/2" by 8 1/2" strip from fabric **L**.
One (1) 4 1/2" by 8 1/2" strip from fabric **Q**.

For EACH block 5 cut: (combination fabrics J-P-G-P-J-P-G-P-J: 7 blocks.)

Two (2) 1 7/8" by 8 1/2" strips from fabric **J**.
Four (4) 1 1/4" by 8 1/2" strips from fabric **P**.
Two (2) 1" by 8 1/2" strips from fabric **G**.
One (1) 1 5/8" by 8 1/2" strip from fabric **J**.

For EACH block 5 cut: (combination fabrics E-M-I-M-E-M-I-M-E: 5 blocks.)

Two (2) 1 7/8" by 8 1/2" strips from fabric **E**.
Four (4) 1 1/4" by 8 1/2" strips from fabric **M**.
Two (2) 1" by 8 1/2" strips from fabric **I**.
One (1) 1 5/8" by 8 1/2" strip from fabric **E**.

For side triangles, cut

Six (6) 12 1/2" squares from fabric **R**.
Cut them twice diagonally.

For corners triangles, cut

Two (2) 6 1/2" squares from fabric **R**.
Cut them once diagonally.

For borders, cut

Two (2) 69 7/8" by 1 1/4" squares from fabric **J**.
Two (2) 79 5/8" by 1 1/4" squares from fabric **J**.

** (in order to get these long strips you need to join two WOF strips together)*

Block Construction: (sew right sides together)

The first 5 blocks are made from strips. Join the strips together following fabric combinations from the picture on the front cover.

For Block 6, sew one 3 1/8" fabric **B** strip to the central square. Add on one side another strip of the same fabric. Keep adding and building the strips increasing the size until you have finished adding all the strips you have cut. Press open.

For Block 7, sew together 3 fabric strips in different widths to form 1 unit (follow the fabric placement from the front cover picture and the block diagram). Make 3 more. Sew the central square to the top extreme of one side of one unit. Sew another unit to the right side. Then, sew another unit to the right side. To complete the block, sew the last unit and stop stitching 1/4" before the end of the seam. Raise the presser foot. Pivot the block 90° and finish sewing the last seam. Press open.

Quilt Top Assembly: (sew right sides together)

- Begin sewing the first row. Start piecing a side quarter-square triangle from fabric **R** to one block. Add another side quarter-square triangle from fabric **R**, positioning it the opposite way. (Follow the front cover picture for block placement).
 - After you finished, start piecing the second row in the same way as the first but changing the blocks (follow the picture on the front cover).
 - Don't piece the rows together yet. Wait until you have completed all the rows (NOTE: the four corner triangle units are the last ones to piece in the top, so leave them for the end).
 - Do the same with the remaining rows until you finish.
 - Now, sew the rows together. Join two diagonal rows (right side fabrics facing). Take much care to match seam intersections (lock them with pins if necessary). Continue joining all the rows.
- For the end, sew the four corner triangles to complete the quilt row. (NOTE: the 1/4" seam allowances of the triangles will extend beyond the edge of the quilt center. Don't worry, they will disappear when you sew the border on top). Press open with a hot iron. Trim "dog ears" of all the side triangles.

For the borders, sew two 69 7/8" by 1 1/4" fabric **J** strips along the top and the bottom sides of the top with a 1/4" seam allowance. Press open.

Join the remaining two strips on the other sides of the top with a 1/4" seam allowance. Press open.

Layer, quilt and bind with fabric **G** strips as desired (by machine or by hand).

While all possible care has been taken to ensure the accuracy of this pattern, we are not responsible for printing errors or the way in which individual work varies.



www.artgalleryfabrics.com