



Sanctuary

{ FEATURING BAZAAR STYLE COLLECTION }



Art Gallery
FABRICS

FREE PROJECT SHEET

DESIGNED WITH LOVE BY Pat Bravo

QUILT DESIGNED
WITH LOVE BY *Pat Bravo*

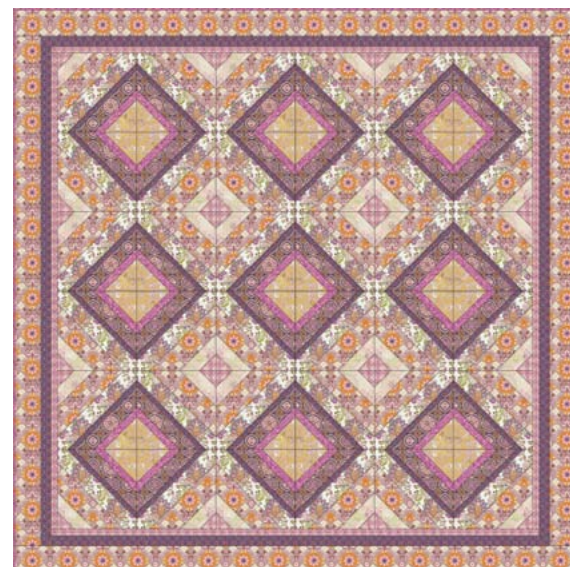
Sanctuary

FINISHED SIZE: 85½" × 85½"
BLOCK SIZE: 12" × 12"

To download the instructions for this pattern visit

www.artgalleryfabrics.com

COLOR OPTION



BAZAAR Style

OASIS



BA-300
Exotic Flora Deep



BA-301
Gems Ocean



BA-302
Medallion Iron



BA-303
Bellydancer Sky



BA-304
Imperial Turquoise



BA-305
Sahara Stars Blue



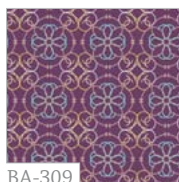
BA-306
Moroccan Street Day



BA-307
Moorish Rug Lilac



BA-308
Moorish Rug Aqua



BA-309
Mosaic Purple

KIT QUANTITY

BA-300	2 yd.	BA-410	5/8 yd.
BA-305	3/4 yd.	BA-402	1 3/8 yd.
BA-309	1 yd.	BA-403	1/2 yd.
BA-304	3/4 yd.	Backing	5 1/2 yd.
BA-301	3 yd.		

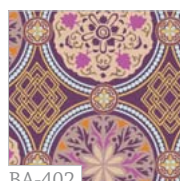
DESERT



BA-400
Exotic Flora Rich



BA-401
Gems Terra



BA-402
Medallion Golden



BA-403
Bellydancer Sand



BA-404
Imperial Fuchsia



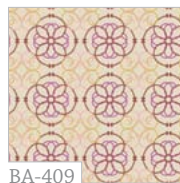
BA-405
Sahara Stars Pink



BA-406
Moroccan Street Night



BA-407
Moorish Rug Green



BA-409
Mosaic Cream



BA-410
Mosaic Rose

COLOR OPTION KIT QUANTITY

BA-400	2 yd.	BA-410	5/8 yd.
BA-405	3/4 yd.	BA-402	1 3/8 yd.
BA-309	1 yd.	BA-403	1/2 yd.
BA-404	3/4 yd.	Backing	5 1/2 yd.
BA-401	3 yd.		



QUILT DESIGNED WITH LOVE
BY PAT BRAVO

FABRICS DESIGNED BY PAT BRAVO
QUILT CONSTRUCTED BY VANESSA VELEZ
FOR ART GALLERY FABRICS



Sanctuary

Featuring **BAZAAR STYLE** COLLECTION

Finished Size: 85 1/2" by 85 1/2"

Finished block size: 12" by 12"

FABRIC REQUIREMENTS

Fabric A BA-300	2 yd.	
Fabric B BA-305	3/4 yd.	Backing Fabric
Fabric C BA-309	1 yd.	BA-305 5 1/2 yd.
Fabric D BA-304	3/4 yd.	(suggested)
Fabric E BA-301	3 yd.	Binding Fabric
Fabric F BA-410	5/8 yd.	BA-304 (Fabric D)
Fabric G BA-302	1 3/8 yd.	(included)
Fabric H BA-303	1 1/2 yd.	



CUTTING DIRECTIONS

This quilt is made in a strip block set on point as shown below (1/4" seam allowances are included).

FOR ALL BLOCKS CUT (36 blocks total)

- Thirty-six (36) 10" x 2 5/8" strips from fabric **B**
- Thirty-six (36) 17" x 3 5/8" strips from fabric **E**
- Thirty-six (36) 18" x 3" strips from fabric **A**
- Thirty-six (36) 18" x 1 1/4" strips from fabric **C**
- Thirty-six (36) 16" x 2 5/8" strips from fabric **G**
- Thirty-six (36) 11 1/4" x 1 1/2" strips from fabric **D**
- Eighteen (18) 5 7/8" squares from fabric **H**

Cut them once diagonally to get 36 triangles.

Eighteen (18) 4" squares from fabric **F**

Cut them once diagonally to get 36 triangles.

FOR BORDERS CUT

For Inner Border

- Two (2) 72 1/2" by 1 1/2" strips from fabric **F***
- Two (2) 74 1/2" by 1 1/2" strips from fabric **F***

For Middle Border

- Two (2) 74 1/2" by 2" strips from fabric **C***
- Two (2) 77 1/2" by 2" strips from fabric **C***

For Outer Border

- Two (2) 77 1/2" by 4 1/2" strips from fabric **E***
- Two (2) 85 1/2" by 4 1/2" strips from fabric **E***

* In order to get these long strips you need to join two Width Of Fabric strips together.

IMPORTANT HINT FOR FABRIC PLACEMENT:

All the letters shown in color **purple** represent the pieces or patches but ALSO represent the fabric styles explained in "FABRIC REQUIREMENTS" (notice they are also represented in the same color).



BLOCKS CONSTRUCTION

All 36 blocks are constructed the same way (sew all fabrics right sides together)

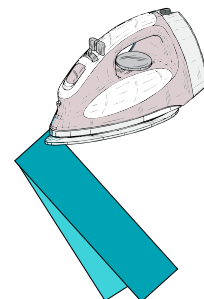
FINISHED BLOCK



DIAGRAM 1

FOR ALL BLOCKS

- The secret to make all blocks is to make a crease at half lengthwise on EVERY strip and triangle. You can do this with your finger or better with an iron. (DIAGRAM 1)



- To piece all blocks, position one fabric **F** triangle on top of one fabric **B** strip, RIGHT sides facing and RAW EDGES aligned. Match both creases and pin. Sew along the entire edge with a 1/4" seam allowance. (DIAGRAM 2)
- Press open. (DIAGRAM 3)

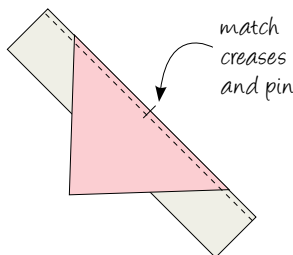


DIAGRAM 2

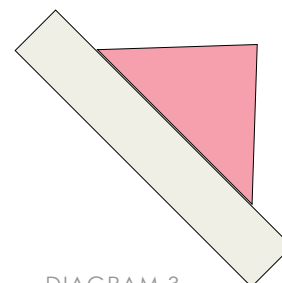
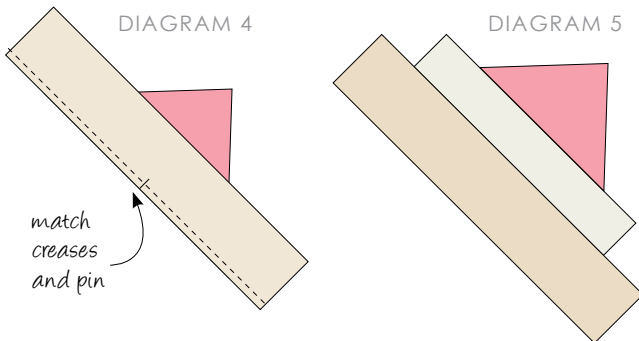


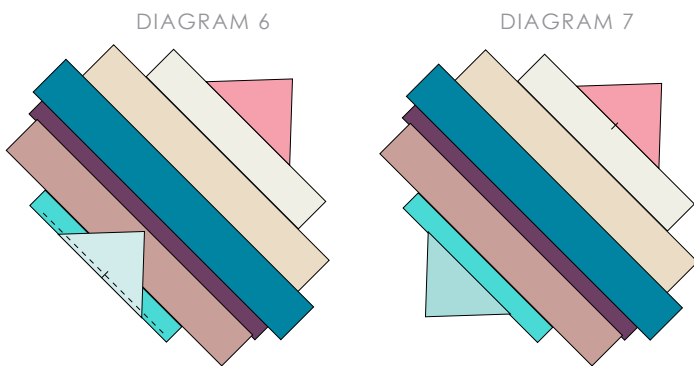
DIAGRAM 3

- Position one fabric **E** strip on top of the opposite edge of the fabric **B** strip, RIGHT sides facing and RAW EDGES aligned. Match both creases and pin. Sew along the entire edge with a $\frac{1}{4}$ " seam allowance. (DIAGRAM 4)

- Press open. (DIAGRAM 5)



- Repeat this step with one fabric **A** strip on top of the fabric **E** strip.
- Repeat this step with one fabric **C** strip on top of the fabric **A** strip.
- Repeat this step with one fabric **G** strip on top of the fabric **C** strip.
- Repeat this step with one fabric **D** strip on top of the fabric **G** strip.
- Position one fabric **H** triangle on top of fabric **D** strip, RIGHT sides facing and RAW EDGES aligned. Match both creases and pin. Sew along the entire edge with a $\frac{1}{4}$ " seam allowance. (DIAGRAM 6)
- Make, in the same way, 35 blocks.
- You will end with blocks looking like DIAGRAM 7.



TRIMMING THE BLOCKS

- Position a $12\frac{1}{2}$ " square ruler over one block. **NOTE:** Be sure that the corners of the ruler meet the corners of the two triangles of the block.
- Holding the ruler firmly in place, trim borders with a rotary cutter to a $12\frac{1}{2}$ " finished size block.
- Trim, in the same way, ALL 35 blocks.



ASSEMBLING THE TOP:

(sew all seams right sides together)

- Begin sewing the first row. Rotate and alternate the blocks as shown in the picture on the pattern cover (**Quilt Layout**). Sew 6 blocks for the first row. Make the remaining rows the same way, until you complete 6 rows. Sew the rows together. Take much care to match seam intersections between each block (lock them with pins if necessary). Continue joining all the rows. Press all seams toward the same direction. Press the **WHOLE TOP** with a hot steam iron.



BORDERS ASSEMBLY

(sew right sides together)

For the inner border

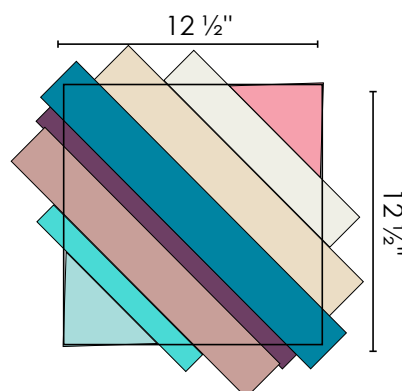
- Sew two $72\frac{1}{2}$ " by $1\frac{1}{2}$ " fabric **F** strips along the opposite sides (left & right) of the top with a $\frac{1}{4}$ " seam allowance, RIGHT sides facing and RAW EDGES aligned. Press open.
- Sew the other two $74\frac{1}{2}$ " by $1\frac{1}{2}$ " fabric **F** strips along the top and bottom sides of the top with a $\frac{1}{4}$ " seam allowance, RIGHT sides facing and RAW EDGES aligned. Press open.

For the middle border

- Sew two $74\frac{1}{2}$ " by 2" fabric **C** strips along the opposite sides (left & right) of the top with a $\frac{1}{4}$ " seam allowance, RIGHT sides facing and RAW EDGES aligned. Press open.
- Sew the other two $77\frac{1}{2}$ " by 2" fabric **C** strips along the top and bottom sides of the top with a $\frac{1}{4}$ " seam allowance, RIGHT sides facing and RAW EDGES aligned. Press open.

For the outer border

- Sew two $77\frac{1}{2}$ " by $4\frac{1}{2}$ " fabric **E** strips along the opposite sides (left & right) of the top with a $\frac{1}{4}$ " seam allowance, RIGHT sides facing and RAW EDGES aligned. Press open.
- Sew the other two $85\frac{1}{2}$ " by $4\frac{1}{2}$ " fabric **E** strips along the top and bottom sides of the top with a $\frac{1}{4}$ " seam allowance, RIGHT sides facing and RAW EDGES aligned. Press open.



TRIMMED BLOCK





QUILT ASSEMBLY

(sew right sides together)

- Place BACKING FABRIC on a large surface wrong side up. Stretch it with masking tape against that surface.
- Place BATTING on top of backing fabric.
- Place TOP on top of the batting with right side facing up. Smooth away wrinkles using your hands.
- Pin all layers together and baste with basting thread, using long stitches. You can also use safety pins to join the layers.
- Machine or hand quilt starting at the center and working towards the corners. Remember that quilting motives are a matter of personal preference. Have fun choosing yours!
- After you finished, trim excess of any fabric or batting, squaring the quilt to proceed to bind it.



BINDING

(sew right sides together)

- Cut enough strips 1½" wide by the width of the fabric **D** to make a final strip 352" long. Start sewing the binding strip in the middle of one of the sides of the quilt, placing the strip right side down and leaving an approximated 5" tail. Sew with ¼" seam allowance (using straight stitch), aligning the strip's raw edge with the quilt top's raw edge.
- Stop stitching ¼" before the edge of the quilt (DIAGRAM B 1). Clip the threads. Remove the quilt from under the machine presser foot. Fold the strip in a motion of 45° and upward, pressing with your fingers (DIAGRAM B2). Hold this fold with your finger, bring the strip down in line with the next edge, making a horizontal fold that aligns with the top edge of the quilt (DIAGRAM B3). Start sewing at ¼" of the border, stitching all the layers. Do the same in the four corners of the quilt.
- Stop stitching before you reach the last 5 or 6 inches. Cut the threads and remove the quilt from under the machine presser foot. Lay the loose ends of the binding flat along the quilt edge, folding the ends back on themselves where they meet. Press them together to form a crease. Using this crease as the stitching line, sew the two open ends of the binding with right sides together (you can help yourself marking with a pencil if the crease is difficult to see).
- Trim seam to ¼" and press open. Complete the sewing. Turn binding to back of the quilt, turn raw edge inside and stitch by hand using blind stitch.



To see more patterns, fabrics and lots of inspiration visit:

patbravo.com



Feel the difference

For wholesale visit:

artgalleryfabrics.com

NOTE: While all possible care has been taken to ensure the accuracy of this pattern, we are not responsible for printing errors or the way in which individual work varies. Please read instructions carefully before starting the construction of this quilt. If desired, wash and iron your fabrics before starting to cut.

© 2011 Courtesy of Art Gallery Quilts LLC.
All Rights Reserved.

DIAGRAM B1

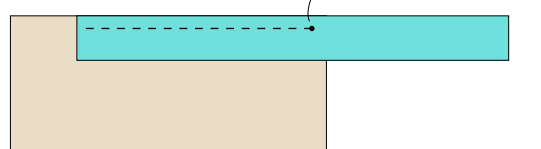
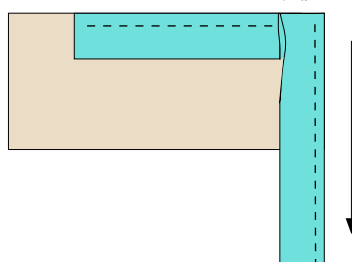


DIAGRAM B2



DIAGRAM B3



CONGRATULATIONS!

