



Tailored

{ FEATURING BESPOKEN COLLECTION }



Art Gallery  
FABRICS

FREE PROJECT SHEET

DESIGNED WITH LOVE BY Pat Bravo



QUILT DESIGNED  
WITH LOVE BY *Pat Bravo*



# Tailored

FINISHED SIZE: 96" x 96"  
BLOCK SIZE: 12" x 12"  
SASHING: 2"

To download the instructions for  
this pattern visit

[artgalleryfabrics.com](http://artgalleryfabrics.com)

[patbravo.com](http://patbravo.com)



COLOR OPTION

# Bespoken

FRESH COUTURE



BE-6100  
Floral Silhouettes Fresh



BE-6101  
Fashion Mood Bright



BE-6102  
Jacquard Marigold



BE-6103  
Fancy Buttons Purple



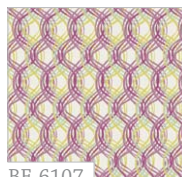
BE-6104  
Millefiori Dark



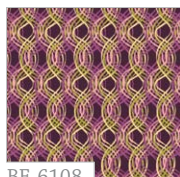
BE-6105  
Stitchery Aqua



BE-6106  
Beaded Gems Topaz



BE-6107  
Woven Dreams



BE-6108  
Woven Passion



BE-6109  
Sequins Turquoise

## COLOR OPTION KIT QUANTITY

BE-6103	5/8 yd.	BE-6105	3/4 yd.
BE-6104	3/4 yd.	BE-6101	5/8 yd.
BE-6109	3/4 yd.	BE-6100	2 yd.
BE-6102	1 3/4 yd.	BE-6106	2 1/4 yd.
BE-6108	1/4 yd.	Backing	7 yd.

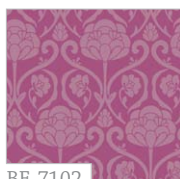
LUSH COUTURE



BE-7100  
Floral Silhouettes Lush



BE-7101  
Fashion Mood Intense



BE-7102  
Jacquard Orchid



BE-7103  
Fancy Buttons Green



BE-7104  
Millefiori Light



BE-7105  
Stitchery Citrus



BE-7106  
Beaded Gems Quartz



BE-7107  
Woven Fantasy



BE-7109  
Sequins Coral



BE-7110  
Sequins Amethyst

## KIT QUANTITY

BE-7103	5/8 yd.	BE-7105	3/4 yd.
BE-7104	3/4 yd.	BE-7101	5/8 yd.
BE-7109	3/4 yd.	BE-7100	2 yd.
BE-7102	1 3/4 yd.	BE-7106	2 1/4 yd.
BE-7107	1/4 yd.	Backing	7 yd.





QUILT DESIGNED WITH LOVE  
BY PAT BRAVO

# Tailored

Featuring **BESPOKEN** COLLECTION

FINISHED SIZE: 96" x 96"  
BLOCK SIZE: 12" x 12"  
SASHING: 2"

## FABRIC REQUIREMENTS

Fabric <b>A</b>	BE-7100	2 yd.
Fabric <b>B</b>	BE-7101	$\frac{5}{8}$ yd.
Fabric <b>C</b>	BE-7103	$\frac{5}{8}$ yd.
Fabric <b>D</b>	BE-7104	$\frac{3}{4}$ yd.
Fabric <b>E</b>	BE-7105	$\frac{3}{4}$ yd.
Fabric <b>F</b>	BE-7109	$\frac{3}{4}$ yd.
Fabric <b>G</b>	BE-7102	1 $\frac{3}{4}$ yd.
Fabric <b>H</b>	BE-7107	$\frac{1}{4}$ yd.
Fabric <b>I</b>	BE-7106	2 $\frac{1}{4}$ yd.

### Backing Fabric

BE-6108 7 yd. (suggested)

### Binding Fabric

BE-7102 (Fabric **G**) (included)

FABRICS DESIGNED BY PAT BRAVO  
FOR **ART GALLERY** FABRICS



## CUTTING DIRECTIONS

All strips are cut width of fabric (WOF),  
except Fabric **H**.

- Cut Fabric **A** into two strips 6 $\frac{1}{2}$ " wide.  
Subcut into 11 (eleven) 6 $\frac{1}{2}$ " squares.
- Cut Fabric **B** into three strips 6 $\frac{1}{2}$ " wide.  
Subcut into 15 (fifteen) 6 $\frac{1}{2}$ " squares.
- Cut Fabric **C** into three strips 6 $\frac{1}{2}$ " wide.  
Subcut into 15 (fifteen) 6 $\frac{1}{2}$ " squares.
- Cut Fabric **D** into four strips 6 $\frac{1}{2}$ " wide.  
Subcut into 19 (nineteen) 6 $\frac{1}{2}$ " squares.
- Cut Fabric **E** into four strips 6 $\frac{1}{2}$ " wide.  
Subcut into 21 (twenty-one) 6 $\frac{1}{2}$ " squares.
- Cut Fabric **F** into four strips 6 $\frac{1}{2}$ " wide.  
Subcut into 19 (nineteen) 6 $\frac{1}{2}$ " squares.

## FOR SASHING, CORNERSTONES & SETTING TRIANGLES

- Cut Fabric **I** into four strips 12 $\frac{1}{2}$ " wide, subcut into 2 $\frac{1}{2}$ " wide sashings, cut one strip 2 $\frac{1}{2}$ " wide, subcut into 12 $\frac{1}{2}$ " long sashings. Total **sixty-four** sashings 2 $\frac{1}{2}$ " x 12 $\frac{1}{2}$ "
- Cut Fabric **H** into eight strips 2 $\frac{1}{2}$ " wide parallel to the selvage, sub cut into twenty-four 2 $\frac{1}{2}$ " squares. Cut two strips 4 $\frac{1}{8}$ " wide, sub cut into two 4 $\frac{1}{8}$ " squares, cut each square on the diagonal twice. Make a total of **twenty-four** cornerstones and **sixteen** small quarter square setting triangles.
- Cut Fabric **G** into two strips 18 $\frac{1}{4}$ " wide, sub cut one strip into one 18 $\frac{1}{4}$ " square and two 9 $\frac{3}{8}$ " squares and subcut the second strip into two 18 $\frac{1}{4}$ " squares. Subcut the 9 $\frac{3}{8}$ " squares diagonally once for corner setting triangles. Subcut the three 18 $\frac{1}{4}$ " squares diagonally twice to make twelve large triangles. Total **twelve** large triangles & **four** corner setting triangles.

## FOR BORDERS

### Inner Border

Cut 9 (nine) 2 $\frac{1}{2}$ " strips WOF from fabric **I**  
and sew end to end.

### Outer Border

Cut 9 (nine) 6 $\frac{1}{2}$ " strips WOF from fabric **A**  
and sew end to end.





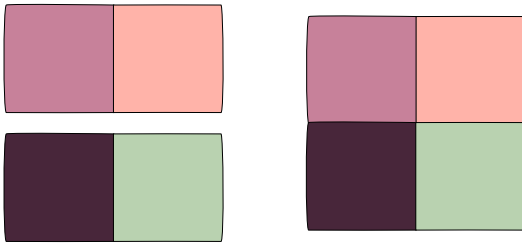


## BLOCK CONSTRUCTION

*Sew all rights sides together with 1/4" seam allowance. Press open.*

- Arrange squares according to the illustration and sew together as traditional four-patch blocks.
  - Sew two sets of two squares together, pressing seams in opposite directions. Sew the second seam forming the four-patch while butting those seams snugly together.

*Make 25 blocks, 12 1/2" square unfinished.*



*finished block*



## ROW CONSTRUCTION

*Sew all rights sides together with 1/4" seam allowance. Press open.*

- Lay out the blocks as illustrated so secondary blocks are formed by the intersections of blocks and sashings.
- Starting at one corner, working from left to right, piece the top together in diagonal rows, with the first row being a smaller fabric **G** setting triangle. Press all seams in the center of the quilt towards the sashing.
- Row 2 is composed of a triangle of fabric **H**, a sashing strip and a second fabric **H** triangle in the opposite direction, lining up with the straight edge of the setting triangle in Row 1.
- Row 3 is a large setting triangle of fabric **G**, angled to match the previous row, a sashing strip, a four-patch block, a sashing strip and a large fabric **G** setting triangle.
- Continue in this manner with each row getting longer until the midpoint of the quilt, then decrease the length of the rows until the top is complete, ending with a small setting fabric **G** setting triangle and changing the angle of the setting triangles to keep the top straight on the sides. Trim the sides even, if necessary, preserving the 1/4" seam allowance.



## BORDERS ASSEMBLY

*Sew all rights sides together with 1/4" seam allowance. Press open.*

- Align & sew the fabric **I** strip along the left side of the quilt center. Press open. Trim the excess fabric. Sew the remaining of the fabric **I** strip on the opposite side (right). Trim the excess.
- Repeat with top & bottom edges.
- Follow same previous steps for the outer border, using fabric **A** strip.



## QUILT ASSEMBLY

- Place BACKING FABRIC on a large surface wrong side up. Stretch it with masking tape against that surface.
- Place BATTING on top of backing fabric.
- Place TOP on top of the batting with right side facing up. Smooth away wrinkles using your hands.
- Pin all layers together and baste with basting thread, using long stitches. You can also use safety pins to join the layers.
- Machine or hand quilt starting at the center and working towards the corners. Remember that quilting motives are a matter of personal preference. Have fun choosing yours!
- After you finished, trim excess of any fabric or batting, squaring the quilt to proceed to bind it.



## BINDING

*Sew all rights sides together.*

- Cut enough strips 1½" wide by the width of the fabric **G** to make a final strip 394" long. Start sewing the binding strip in the middle of one of the sides of the quilt, placing the strip right side down and leaving an approximated 5" tail. Sew with ¼" seam allowance (using straight stitch), aligning the strip's raw edge with the quilt top's raw edge.
- Stop stitching ¼" before the edge of the quilt (DIAGRAM B 1). Clip the threads. Remove the quilt from under the machine presser foot. Fold the strip in a motion of 45° and upward, pressing with your fingers (DIAGRAM B2). Hold this fold with your finger, bring the strip down in line with the next edge, making a horizontal fold that aligns with the top edge of the quilt (DIAGRAM B3). Start sewing at ¼" of the border, stitching all the layers. Do the same in the four corners of the quilt.
- Stop stitching before you reach the last 5 or 6 inches. Cut the threads and remove the quilt from under the machine presser foot. Lay the loose ends of the binding flat along the quilt edge, folding the ends back on themselves where they meet. Press them together to form a crease. Using this crease as the stitching line, sew the two open ends of the binding with right sides together (you can help yourself marking with a pencil if the crease is difficult to see).
- Trim seam to ¼" and press open. Complete the sewing. Turn binding to back of the quilt, turn raw edge inside and stitch by hand using blind stitch.

DIAGRAM B1

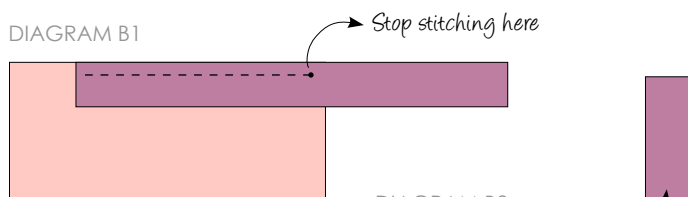


DIAGRAM B2

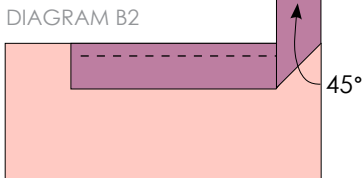
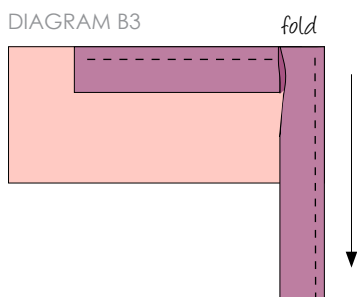
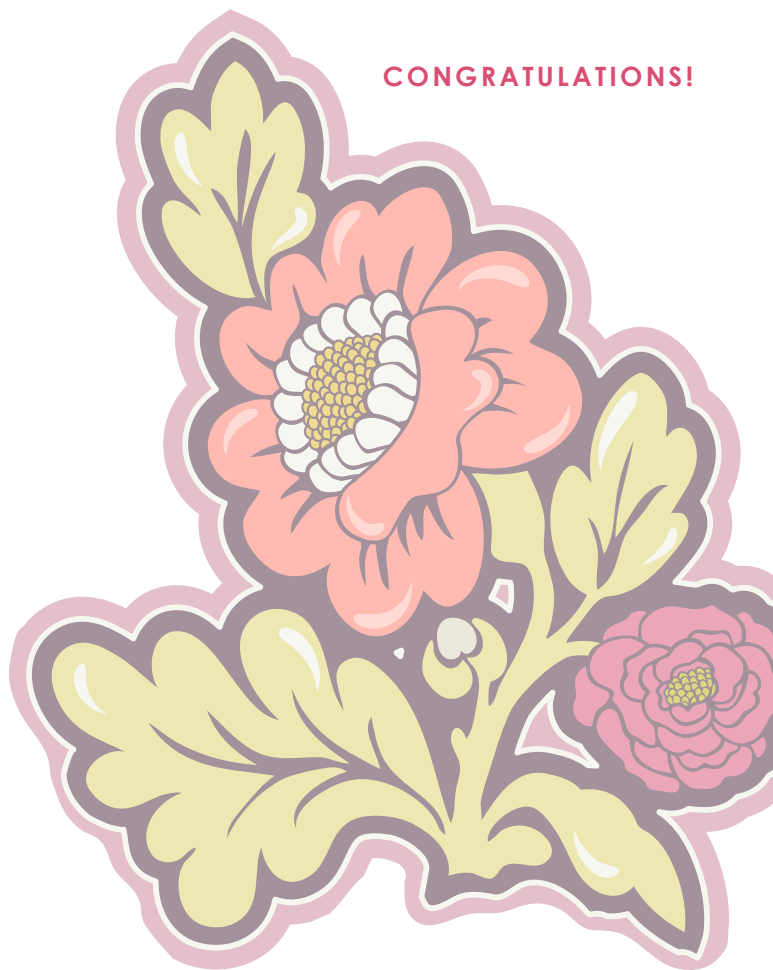


DIAGRAM B3



CONGRATULATIONS!



To see more patterns, fabrics  
and lots of inspiration visit:

[patbravo.com](http://patbravo.com)



*Feel the difference*

For wholesale visit:

[artgalleryfabrics.com](http://artgalleryfabrics.com)

*NOTE: While all possible care has been taken to ensure the accuracy of this pattern, we are not responsible for printing errors or the way in which individual work varies. Please read instructions carefully before starting the construction of this quilt. If desired, wash and iron your fabrics before starting to cut.*

© 2011 Courtesy of Art Gallery Quilts LLC.  
All Rights Reserved.