

# Floral Envelopes

{ FEATURING PARADISE COLLECTION }



Art Gallery  
FABRICS

FREE PROJECT SHEET

DESIGNED WITH LOVE BY Pat Bravo



QUILT DESIGNED  
WITH LOVE BY *Pat Bravo*

# Floral Envelopes

FINISHED SIZE: 78" × 78"  
BLOCK SIZE: 16" × 16"

To download the instructions for this pattern visit

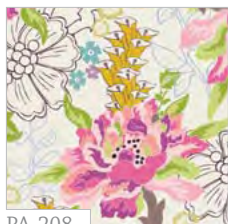
[www.artgalleryfabrics.com](http://www.artgalleryfabrics.com)

COLOR OPTION

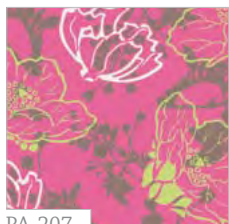


## Paradise

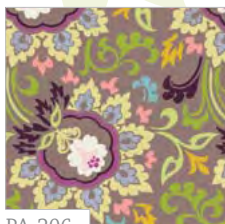
SUNRISE



PA-208  
Daylight Pond



PA-207  
Morning Showers



PA-206  
Taupe Double Bloom



PA-205  
Fresh Tiny Buds



PA-203  
Dark Chic Paper



PA-204  
Pink Eternal Sashes



PA-201  
Orchid Sparkles



PA-202  
Flashy Tealight



PA-200  
Pink Squared Fashion

### KIT QUANTITY

PA-200	1 7/8 yd.	PA-207	1 1/4 yd.
PA-201	3/4 yd.	PA-208	3/4 yd.
PA-202	1 3/4 yd.	PA-206	5/8 yd.
PA-205	5/8 yd.	PA-204	3/4 yd.
PA-203	1 yd.	Backing	4 7/8 yd.

SUNSET



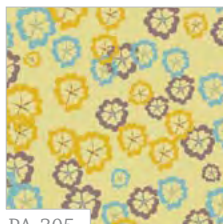
PA-308  
Twilight Pond



PA-307  
Evening Showers



PA-306  
Ivory Double Bloom



PA-305  
Soft Tiny Buds



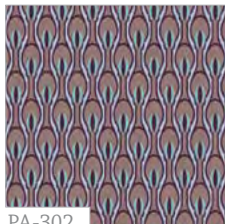
PA-303  
Light Chic Paper



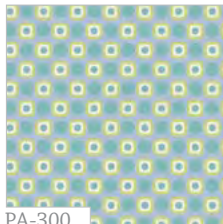
PA-304  
Green Eternal Sashes



PA-301  
Teal Sparkles



PA-302  
Ashy Tealight



PA-300  
Blue Squared Fashion

### COLOR OPTION KIT QUANTITY

PA-300	1 7/8 yd.	PA-307	1 1/4 yd.
PA-301	3/4 yd.	PA-308	3/4 yd.
PA-302	1 3/4 yd.	PA-306	5/8 yd.
PA-305	5/8 yd.	PA-304	3/4 yd.
PA-303	1 yd.	Backing	4 7/8 yd.



# Floral Envelopes

FINISHED SIZE: 78 1/2" x 78 1/2"

## Paradise COLLECTION

### FABRIC REQUIREMENTS

Fabric <b>A</b>	PA-200	1 7/8 yd.
Fabric <b>B</b>	PA-201	3/4 yd.
Fabric <b>C</b>	PA-202	1 3/4 yd.
Fabric <b>D</b>	PA-205	5/8 yd.
Fabric <b>E</b>	PA-203	1 yd.
Fabric <b>F</b>	PA-207	1 1/4 yd.
Fabric <b>G</b>	PA-208	3/4 yd.
Fabric <b>H</b>	PA-206	5/8 yd.
Fabric <b>I</b>	PA-204	3/4 yd.

**Backing** PA-200 (FABRIC **A**)  
4 1/2 yd. (suggested)

**Binding** (included) PA-200  
(FABRIC **A**)

### CUTTING DIRECTIONS

#### FOR ALL BLOCKS CUT

Thirty-two (32) 17 5/8" x 5 7/8" rectangles from fabric **A**  
One (1) 4 5/8" square from fabric **A** (Cut it once diagonally)  
Twelve (12) 17 5/8" x 5 7/8" rectangles from fabric **B**  
Thirty-three (33) 17 5/8" x 5 7/8" rectangles from fabric **C**  
Twelve (12) 17 5/8" x 5 7/8" rectangles from fabric **D**  
Twenty-four (24) 17 5/8" x 5 7/8" rectangles from fabric **F**  
Twelve (12) 17 5/8" x 5 7/8" rectangles from fabric **G**  
Ten (10) 17 5/8" x 5 7/8" rectangles from fabric **H**

#### FOR BORDERS CUT

##### For Inner Border

Two (2) 68 1/2" by 2 1/2" strips from fabric **I**\*  
Two (2) 72 1/2" by 2 1/2" strips from fabric **I**\*

##### For Outer Border

Two (2) 72 1/2" by 3 1/2" strips from fabric **E**\*  
Two (2) 78 1/2" by 3 1/2" strips from fabric **E**\*

\* (in order to get these long strips you need to join two Width Of Fabric strips together)

#### IMPORTANT HINT FOR FABRIC PLACEMENT:

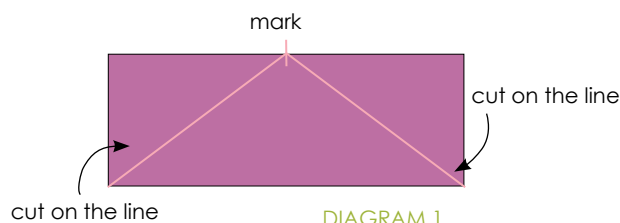
All the letters shown in color **green** represent the pieces or patches but ALSO represent the fabric styles explained in "FABRIC REQUIREMENTS" (notice they are also represented in the same color).

### ROW CONSTRUCTION

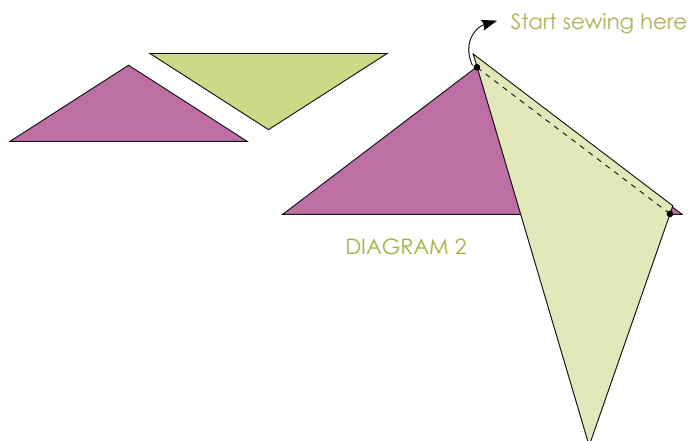
(sew fabrics right sides together)

*This quilt is constructed in diagonal rows instead of blocks. All rows are constructed the same way*

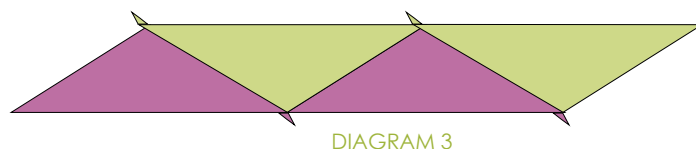
- Place one fabric rectangle on your cutting mat. Make a mark on the center of one long side edge with a water soluble pen. Draw a diagonal line connecting that mark with one bottom corner. Draw another line but this time on the opposite side. Rotary cut on both lines, revealing a triangle. (DIAGRAM 1)
- Repeat the same step with all the rectangles.



- Grab two triangles. Position one triangle on top of another triangle (right sides facing together) as shown on DIAGRAM 2.
- Start sewing at the exact intersection of the two fabrics with a 1/4" seam allowance. Press seams open. **(You will notice that the tip of the top triangle shows over the edge of the bottom triangle. These are called "dog ears". It is normal when you sew triangles and you will trim them out later).**



- Continue adding another triangle and then another (as shown in DIAGRAM 3, in the same way you did in last step. Make sure you follow color fabric sequence in the front cover picture quilt layout, for fabric placement.





- For the first row, piece together three triangles (as shown in **DIAGRAM 4**). Remember to press open all seams.

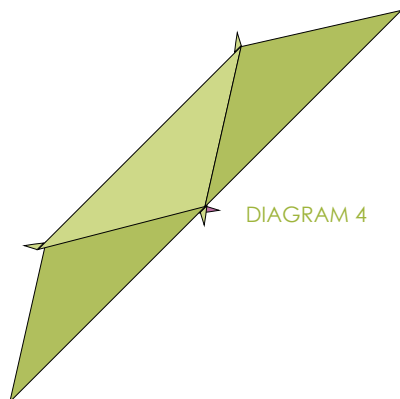


DIAGRAM 4

- Make, in the same way row after row, until you finish all the triangles cut. **DIAGRAM 5**

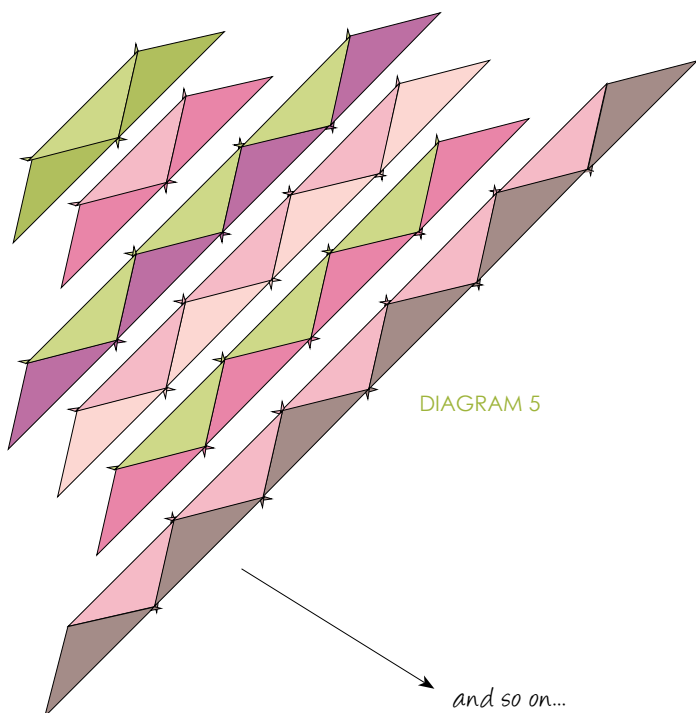


DIAGRAM 5

and so on...

- Trim all "dog ears". You can make this with scissors or with a rotary cutter.
- Sew the rows together (**Follow the front cover picture for row placement**). Take much care to match seam intersections between each row (lock them with pins if necessary). Continue joining all the rows. Press all seams toward the same direction.
- Press the **WHOLE TOP** with a hot steam iron.

- Sew two fabric **A** small triangles on the two corners of the top. **DIAGRAM 6**

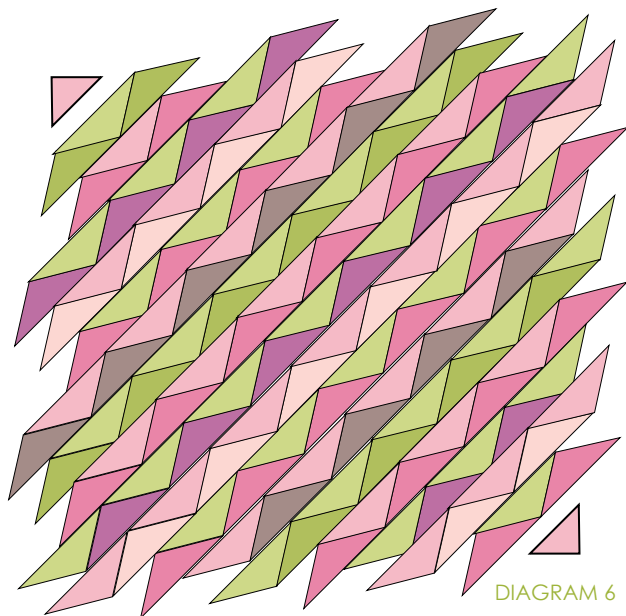


DIAGRAM 6

- To square the top, place it on top of a large cutting mat. Using a long ruler and following one of the small corner triangles as a guide, trim excess fabric. Make sure you leave a  $\frac{1}{4}$ " extra over the tip of fabric **F** triangles as you trim. **DIAGRAM 7**

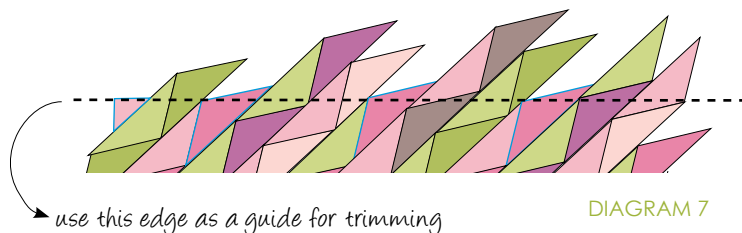
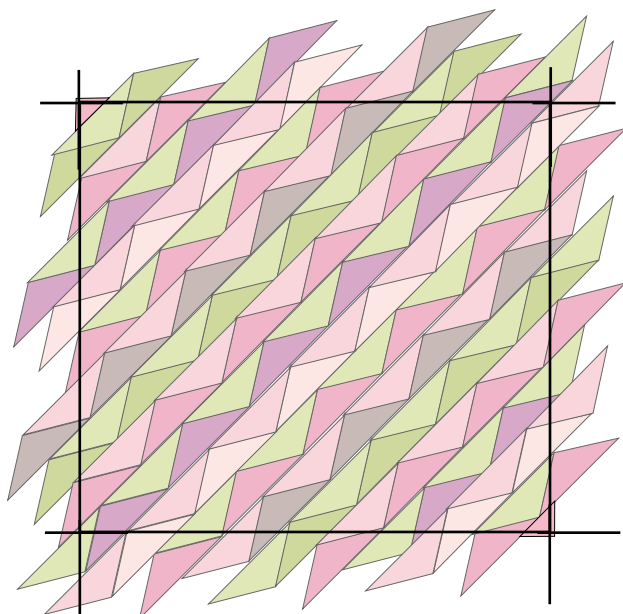


DIAGRAM 7

- Trim in the same way the remaining three sides of the top.



## BORDERS ASSEMBLY

(sew right sides together)

### For the inner border

- Sew two 68 ½" by 2 ½" fabric **I** strips along the opposite sides (left & right) of the top with a ¼" seam allowance. Press open.
- Sew the other two 72 ½" by 2 ½" fabric **I** strips along the top and bottom sides of the top with a ¼" seam allowance. Press open.

### For the outer border

- Sew two 72 ½" by 3 ½" fabric **E** strips along the opposite sides (left & right) of the top with a ¼" seam allowance. Press open.
- Sew the other two 78 ½" by 3 ½" fabric **E** strips along the top and bottom sides of the top with a ¼" seam allowance. Press open.

## QUILT ASSEMBLY

(sew right sides together)

- Place BACKING FABRIC on a large flat surface wrong side up. Stretch it with masking tape against that surface.
- Place BATTING on top of backing fabric.
- Place TOP on top of the batting with right side facing up. Smooth away wrinkles using your hands.
- Pin all layers together and baste with basting thread, using long stitches. You can also use safety pins to join the layers.
- Machine or hand quilt starting at the center and moving towards the EDGES in all directions.

## BINDING

(sew right sides together)

- Cut enough strips 1 ½" wide by the width of the fabric (in length) **A** to make a final strip 324" long (approximately 8 strips). Start sewing the binding strip in the middle of one of the sides of the quilt, placing the strip right side down facing the quilt and leaving an approximated 5" tail loose. Sew with ¼" seam allowance (using straight stitch), aligning the strip's raw edge with the quilt top's raw edge.
- Stop stitching ¼" before the end of the quilt (**DIAGRAM B1**). Clip the threads. Remove the quilt from under the machine presser foot. Fold the strip in a motion of 45° and upward, pressing with your fingers (**DIAGRAM B2**). Hold this fold with your finger, bring the strip down in line with the next edge, making a horizontal fold that aligns with the top edge of the quilt (**DIAGRAM B3**). Start sewing at ¼" of the border, stitching all the layers. Do the same in the four corners of the quilt.
- Stop stitching before you reach the last 5 or 6 inches. Cut the threads and remove the quilt from under the machine presser foot. Lay the loose ends of the binding flat along the quilt edge, folding the ends back on themselves where they meet. Press them together to form a crease. Using this crease as the stitching line, sew the two open ends of the binding with right sides together (you can help yourself marking with a pencil if the crease is difficult to see).
- Trim seam to ¼" and press open. Complete the sewing. Turn binding to back of the quilt, turn raw edge inside and stitch by hand using blind stitch.

DIAGRAM B1

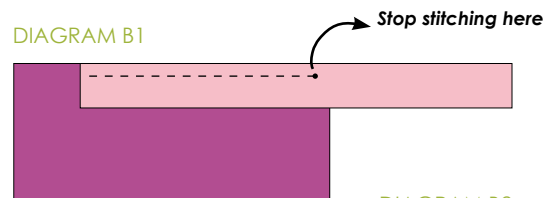


DIAGRAM B2

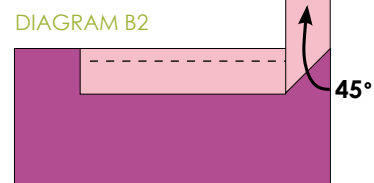
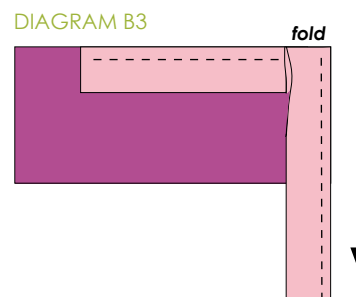


DIAGRAM B3



## CONGRATULATIONS!

NOTES: While all possible care has been taken to ensure the accuracy of this pattern, we are not responsible for printing errors or the way in which individual work varies.

Please read instructions carefully before starting the construction of this quilt. If desired, wash and iron your fabrics before starting to cut.