

Serendipity

{ FEATURING PARADISE COLLECTION }



Art Gallery
FABRICS

FREE PROJECT SHEET

DESIGNED WITH LOVE BY Pat Bravo



Serendipity

Finished Size: 56.5" by 64.5"

Block Size: 8½" by 8½"

Number of blocks: 56

Paradise COLLECTION

FABRICS DESIGNED BY PATRICIA BRAVO

FABRIC REQUIREMENTS

Fabric A	PA-208	Fat Quarter
Fabric B	PA-207	Fat Quarter
Fabric C	PA-206	Fat Quarter
Fabric D	PA-205	Fat Quarter
Fabric E	PA-203	Fat Quarter
Fabric F	PA-204	Fat Quarter
Fabric G	PA-201	Fat Quarter
Fabric H	PA-202	Fat Quarter
Fabric I	PA-200	Fat Quarter
Fabric J	PA-308	Fat Quarter
Fabric K	PA-307	Fat Quarter
Fabric L	PA-306	Fat Quarter
Fabric M	PA-305	Fat Quarter
Fabric N	PA-303	Fat Quarter
Fabric O	PA-304	Fat Quarter
Fabric P	PA-301	Fat Quarter
Fabric Q	PA-302	Fat Quarter
Fabric R	PA-300	Fat Quarter
Fabric S	NE-112	¼ yd.
Fabric T	NE-101	1/8 yd.
Fabric U	NE-116	3/8 yd.
Fabric V	NE-104	½ yd.
Fabric W	NE-114	1/8 yd.
Fabric X	NE-121	¼ yd.
Fabric Y	NE-110	¼ yd.

Backing

(B)	PA-207	½ yd. (suggested)
(D)	PA-205	½ yd. (suggested)
(G)	PA-201	½ yd. (suggested)
(K)	PA-307	½ yd. (suggested)
(L)	PA-306	½ yd. (suggested)
(O)	PA-304	½ yd. (suggested)
(P)	PA-301	½ yd. (suggested)

Binding NE-104

(FABRIC **V**) ¼ yd.



Fabric **A**
PA-208



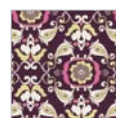
Fabric **B**
PA-207



Fabric **C**
PA-206



Fabric **D**
PA-205



Fabric **E**
PA-203



Fabric **F**
PA-204



Fabric **G**
PA-201



Fabric **H**
PA-202



Fabric **I**
PA-200



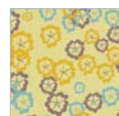
Fabric **J**
PA-308



Fabric **K**
PA-307



Fabric **L**
PA-306



Fabric **M**
PA-305



Fabric **N**
PA-303



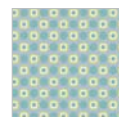
Fabric **O**
PA-304



Fabric **P**
PA-301



Fabric **Q**
PA-302



Fabric **R**
PA-300



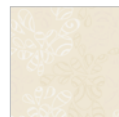
Fabric **S**
NE-112



Fabric **T**
NE-101



Fabric **U**
NE-116



Fabric **V**
NE-104



Fabric **W**
NE-114



Fabric **X**
NE-121



Fabric **Y**
NE-110





CUTTING DIRECTIONS

($\frac{1}{4}$ " seam allowances are included)

FOR ALL BLOCKS, CUT

Three (3) $8\frac{1}{2}$ " squares from fabric **A**
 Three (3) $8\frac{1}{2}$ " squares from fabric **B**
 Three (3) $8\frac{1}{2}$ " squares from fabric **C**
 Three (3) $8\frac{1}{2}$ " squares from fabric **D**
 Three (3) $8\frac{1}{2}$ " squares from fabric **E**
 Three (3) $8\frac{1}{2}$ " squares from fabric **F**
 Three (3) $8\frac{1}{2}$ " squares from fabric **G**
 Three (3) $8\frac{1}{2}$ " squares from fabric **H**
 Three (3) $8\frac{1}{2}$ " squares from fabric **I**
 Three (3) $8\frac{1}{2}$ " squares from fabric **J**
 Three (3) $8\frac{1}{2}$ " squares from fabric **K**
 Three (3) $8\frac{1}{2}$ " squares from fabric **L**
 Three (3) $8\frac{1}{2}$ " squares from fabric **M**
 Four (4) $8\frac{1}{2}$ " squares from fabric **N**
 Three (3) $8\frac{1}{2}$ " squares from fabric **O**
 Four (4) $8\frac{1}{2}$ " squares from fabric **P**
 Three (3) $8\frac{1}{2}$ " squares from fabric **Q**
 Three (3) $8\frac{1}{2}$ " squares from fabric **R**

FOR RUFFLES, CUT

Four (4) 2" by 44" strips from fabric **S**
 Two (2) 2" by 44" strips from fabric **T**
 Five (5) 2" by 44" strips from fabric **U**
 Eight (8) 2" by 44" strips from fabric **V**
 Two (2) 2" by 44" strips from fabric **W**
 Three (3) 2" by 44" strips from fabric **X**
 Four (4) 2" by 44" strips from fabric **Y**

IMPORTANT HINT FOR FABRIC PLACEMENT:

All the letters shown in color **PURPLE** represent the pieces or patches but ALSO represent the fabric styles explained in "FABRIC REQUIREMENTS" (notice they are also represented in the same color).

RUFFLE CONSTRUCTION

All ruffles are constructed the same way

To construct each of the ruffles :

- Grab a strip of fabric **V** and fold it so that the 2" ends meet and stitch with a $\frac{1}{4}$ " seam allowance (right sides together). Open and press. (DIAGRAM 1)

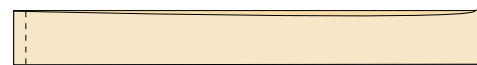


DIAGRAM 1

- Fold the ring in half so that you get a 1" wide ring. (DIAGRAM 2) You should now be able to see only the right side. (DIAGRAM 3)

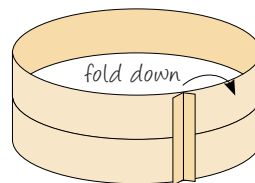


DIAGRAM 2

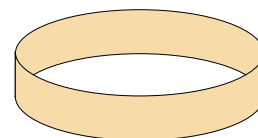


DIAGRAM 3

- Sew a basting stitch $\frac{1}{8}$ " from the raw edges. Make sure to leave a long tail of thread on each end. (DIAGRAM 4)

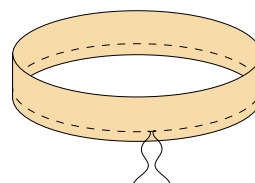


DIAGRAM 4

- Begin pulling the thread ends, gathering the basting stitch until the fabric ring becomes a little bit curly. Don't cut the thread tails just yet. (DIAGRAM 5).

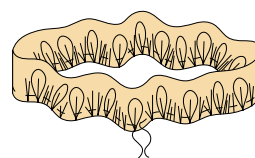


DIAGRAM 5

- Start pinning the ring around the perimeter of a fabric **G** square by aligning the raw edges of the ring/ruffle to the raw edges of the square. Make sure the ruffle covers the entire square, evening the ruffle out as you go. (DIAGRAM 6).

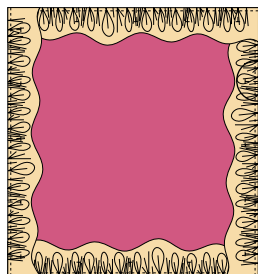
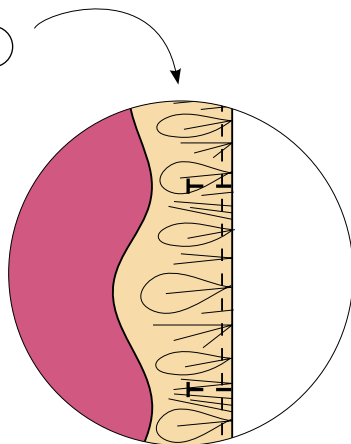


DIAGRAM 6



- Repeat the previous steps with the following combinations:

SQUARES AND RUFFLES COMBINATIONS

FABRIC SQUARE	RUFFLE	# of Units
Fabric A PA-208	Fabric S NE-112	1
Fabric A PA-208	Fabric W NE-114	1
Fabric B PA-207	Fabric U NE-116	1
Fabric C PA-206	Fabric U NE-116	2
Fabric D PA-205	Fabric W NE-114	1
Fabric E PA-203	Fabric V NE-104	1
Fabric F PA-204	Fabric X NE-121	1
Fabric F PA-204	Fabric Y NE-110	1
Fabric G PA-201	Fabric V NE-104	1
Fabric H PA-202	Fabric S NE-112	1
Fabric I PA-200	Fabric V NE-104	3
Fabric J PA-308	Fabric T NE-101	1
Fabric K PA-307	Fabric Y NE-110	2
Fabric L PA-306	Fabric S NE-112	1
Fabric L PA-306	Fabric X NE-121	1
Fabric N PA-303	Fabric S NE-112	1
Fabric N PA-303	Fabric Y NE-110	1
Fabric O PA-304	Fabric X NE-121	1
Fabric P PA-301	Fabric V NE-104	1
Fabric Q PA-302	Fabric T NE-101	1
Fabric Q PA-302	Fabric V NE-104	1
Fabric R PA-300	Fabric U NE-116	2

BACKING ASSEMBLY

(sew fabrics right sides together and with a ¼" seam allowance)

- The backing is constructed with all the fabrics mentioned in the Fabric Requirements Backing Section in 8½" wide strips by the length of the finished top (64.5").

QUILT TOP ASSEMBLY

(sew fabrics right sides together and with a ¼" seam allowance)

- Begin sewing the first row. Alternate blocks between blocks with ruffles and blocks without, starting the first row with a block that has a ruffle. Press seams open. (Follow the front cover picture for block placement).
- Sew the second row starting with a block that doesn't have a ruffle. Press seams open. (Follow the front cover picture for block placement).
- Rows 1, 3, 5, and 7 all start with blocks that have ruffles. Rows 2, 4, 6, and 8 start with blocks that don't have ruffles. (Follow the front cover picture for block placement).

- Take much care to match seam intersections between each block (lock them with pins if necessary). Continue joining all rows. Press all seams toward the same direction.

QUILT ASSEMBLY

(sew right sides together)

- Place BACKING FABRIC on a large flat surface **wrong** side up. Stretch it with masking tape against that surface.
- Place BATTING on top of back-ing fabric.
- Place TOP on top of the batting with **right** side facing up. Smooth away wrinkles using your hands.
- Pin all layers together and baste with basting thread, using long stitches. You can also use safety pins to join the layers.
- Machine or hand quilt starting at the center.

BINDING

(sew right sides together)


- Cut enough strips $1\frac{1}{2}$ " wide by the width of the fabric (in length)  to make a final strip 252" long. Start sewing the binding strip in the middle of one of the sides of the quilt, placing the strip right side down facing the quilt and leaving an approximated 5" tail. Sew with $\frac{1}{4}$ " seam allowance (using straight stitch), aligning the strip's raw edge with the quilt top's raw edge.
- Stop stitching $\frac{1}{4}$ " before the end of the quilt (DIAGRAM B1). Clip the threads. Remove the quilt from under the machine presser foot. Fold the strip in a motion of 45° and upward, pressing with your fingers (DIAGRAM B2). Hold this fold with your finger, bring the strip down in line with the next edge, making a horizontal fold that aligns with the top edge of the quilt (DIAGRAM B3). Start sewing at $\frac{1}{4}$ " of the border, stitching all the layers. Do the same in the four corners of the quilt.
- Stop stitching before you reach the last 5 or 6 inches. Cut the threads and remove the quilt from under the machine presser foot. Lay the loose ends of the binding flat along the quilt edge, folding the ends back on themselves where they meet. Press them together to form a crease. Using this crease as the stitching line, sew the two open ends of the binding with right sides together (you can help yourself marking with a pencil if the crease is difficult to see).
- Trim seam to $\frac{1}{4}$ " and press open. Complete the sewing. Turn binding to back of the quilt, turn raw edge inside and stitch by hand using blind stitch.

DIAGRAM B1

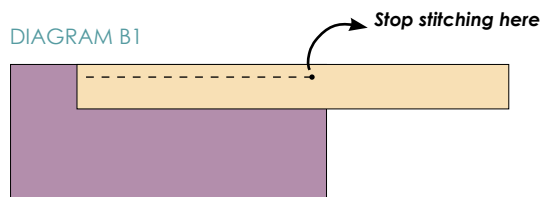


DIAGRAM B2

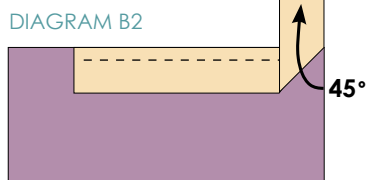
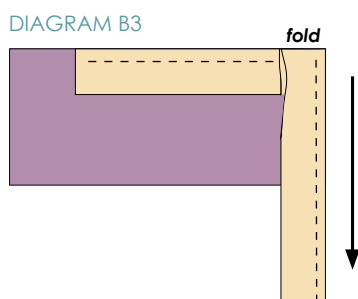


DIAGRAM B3



CONGRATULATIONS!

