

Gipsy Jewels

Featuring GIPSY GLITTER™ Collection

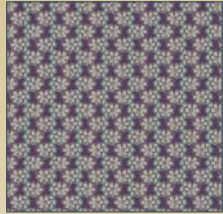
Free Project Sheet



Designed by Patricia Bravo - 47.5" by 55.5"



GG-7526



GG-7525



GG-7524



GG-7523



GG-7522



GG-7521



GG-8526



GG-8525



GG-8524



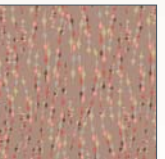
GG-8523



GG-8522



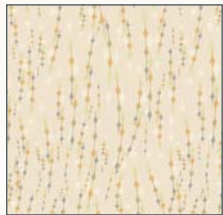
GG-8521



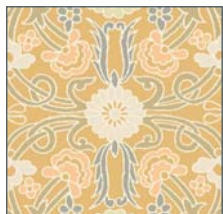
GG-8520



GG-8527



GG-7520



GG-7527



© 2008 Courtesy of Art Gallery Quilts LLC. All rights reserved

3804 N 29th Avenue - Hollywood, FL 33020. TEL: (888) 420-5399 FAX: (425) 799-6103

for more fabrics and projects visit our website www.artgalleryfabrics.com

Fabric Requirements: "GIPSY GLITTER" COLLECTION

Fabric A: 1/4 yd. of **GG-7527**
 Fabric B: 1/2 yd. of **GG-7521**
 Fabric C: 3/8 yd. of **GG-7520**

Fabric D: 3/8 yd. of **GG-7523**
 Fabric E: 5/8 yd. of **GG-7522**
 Fabric F: 1/4 yd. of **GG-7526**

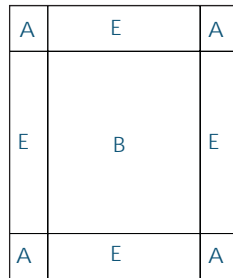
Fabric G: 1/2 yd. of **GG-7525**
 Fabric H: 1 yd. of **GG-7524**

*The estimate for the fabrics of the borders and binding assumes that long strips are pieced.
 All seam allowances are 1/4". Please read all directions before beginning and press carefully after each seam.*

Cutting Directions: This quilt consist of 2 blocks:

For each block 1 cut: (8 blocks total)

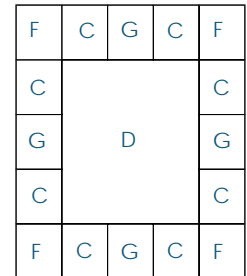
One (1) 7 1/8" by 8 1/2" strip from fabric B.
 Two (2) 8 1/2" by 2 1/8" strips from fabric E.
 Two (2) 7 1/8" by 2 1/2" strips from fabric E.
 Four (4) 2 1/2" by 2 1/8" strip from fabric A.



BLOCK 1 Diagram

For each block 2 cut: (8 blocks total)

Four (4) 2 1/2" by 2 7/8" strips from fabric G.
 Eight (8) 2 1/2" by 2 7/8" strips from fabric C.
 Four (4) 2 1/2" by 2 7/8" strips from fabric F.
 One (1) 7 3/4" by 6 1/2" strip from fabric D.



BLOCK 2 Diagram

For borders cut

Two (2) 40 1/2" by 4" strips from fabric H.
 Two (2) 55" by 4" strips from fabric H.

Block Construction: (right sides together)

(IMPORTANT: pay attention to the position of the strips because both blocks are made rectangles instead of squares)

For each block 1, piece two 2 1/8" by 2 1/2" fabric A strips with one 7 1/8" by 2 1/2" fabric E strip in the middle, for the top unit, as shown in *BLOCK 1 Diagram*. Make another like this (for the bottom unit). For the center unit, piece two 8 1/2" by 2 1/8" fabric E strips with one 7 1/8" by 8 1/2" fabric B strip in the middle.

Join the block piecing the three units as shown in the *BLOCK1 Diagram*. **Make 8 Blocks.**

For each block 2, piece alternatively two 2 7/8" by 2 1/2" fabric C strips with one 2 7/8" by 2 1/2" fabric G strip in the middle. Add on each extreme one 2 7/8" by 2 1/2" fabric F strip, for the top unit, as shown in *BLOCK 2 Diagram*. Make another like this (for the bottom unit).

For the center unit, piece alternatively two 8 1/2" by 2 1/8" fabric C strips with one 7 1/8" by 8 1/2" fabric G strip in the middle. Make another one like this. Piece these two together with one 7 3/4" by 6 1/2" fabric D strip.

Join the block piecing the three units as shown in the *BLOCK1 Diagram*. **Make 8 Blocks.**

Quilt Top Assembly: (right sides together)

For first row: Sew alternatively one block 1 with one block 2 until you have 4 blocks to complete the first row.

Complete all the rows in the same way but alternating the blocks in different position. Then, piece all the rows together as shown on the *picture on the cover*.

For the border, sew two 40 1/2" by 4" fabric H strips along the top and the bottom sides of the top with a 1/4" seam allowance. Press open.

Join, two fabric H strips in order to make a 55" by 4" strip. Make another long strip like this. Sew them along the remaining sides of the top with a 1/4" seam allowance. Press open.

Layer, quilt and bind with fabric G strips as desired (by machine or by hand).



Color Variation

While all possible care has been taken to ensure the accuracy of this pattern, we are not responsible for printing errors or the way in which individual work varies.