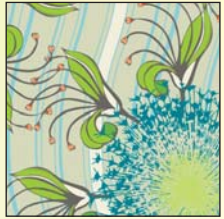


Prismatic

Featuring "COLOR SPLASH" Collection



CS-4500



CS-4501



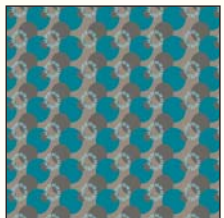
CS-4502



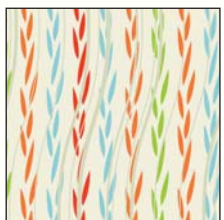
CS-4503



CS-4504



CS-4507



CS-4506



CS-4505



Designed by Patricia Bravo - 70" by 70"

Free Project Sheet



CS-3500



CS-3501



CS-3502



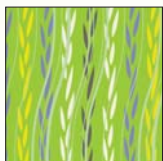
CS-3503



CS-3504



CS-3507



CS-3506



CS-3505



© 2008 Courtesy of Art Gallery Quilts LLC. All rights reserved.

3804 N 29th Avenue - Hollywood, FL 33020. TEL: (888) 420-5399 FAX: (425) 799-6103

for more fabrics and projects visit our website www.artgalleryfabrics.com

Fabric Requirements: "COLOR SPLASH" COLLECTION

Fabric A: 1 1/8 yd. of **CS-3502**
Fabric B: 1 1/8 yd. of **CS-3501**

Fabric C: 3/4 yd. of **CS-3506**
Fabric D: 3/4 yd. of **CS-3504**

Fabric E: 3/4 yd. of **CS-3500**
Fabric F: 3/4 yd. of **CS-3503**

Fabric G: 1 yd. of **CS-3507**
Fabric H: 3/8 yd. of **CS-3505**

Fabric suggested for backing: 4 1/4 yd. of Fabric **G**

*The estimate for the fabrics of the borders and binding assumes that long strips are pieced.
All seam allowances are 1/4". Please read all directions before beginning and press carefully after each seam.*

Cutting Directions: This quilt consist of 1 Half-Square Triangle block:

For all blocks cut: (61 blocks total)

Nine (9) 8 7/8" squares from fabric A. Cut them once diagonally.
Fifteen (15) 8 7/8" squares from fabric B. Cut them once diagonally.
Seven (7) 8 7/8" squares from fabric D. Cut them once diagonally.
Nine (9) 8 7/8" squares from fabric E. Cut them once diagonally.
Nine (9) 8 7/8" squares from fabric F. Cut them once diagonally.
Seven (7) 8 7/8" squares from fabric G. Cut them once diagonally.
Six (6) 8 7/8" squares from fabric H. Cut them once diagonally.

For side triangles cut

Five (5) 12 1/2" squares from fabric C. Cut them twice diagonally.
You will have twenty Quarter-Square Triangles.

For corner triangles cut

Two (2) 6 1/2" squares from fabric C. Cut them once diagonally. You will have four Half-Square Triangles.

For borders cut

Two (2) 68 3/8" by 1 1/2" strips from fabric A. Two (2) 70 3/8" by 1 1/2" strips from fabric A.*

* (in order to get these long strips you need to join two WOF strips together)

Block Construction: (sew right sides together)

For each block, piece two Half-Square Triangles following the fabric choices in the picture of the front cover. **Make 61 Blocks.**

Quilt Top Assembly: (sew right sides together)

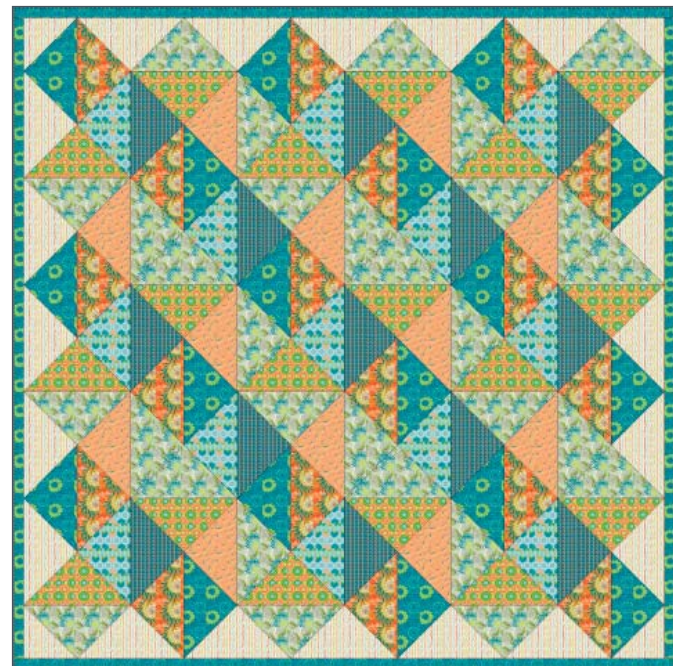
- Begin sewing the first row. Start piecing a side quarter-square triangle from fabric C to one block. Add another side quarter-square triangle from fabric C, positioning it the opposite way. (Follow the front cover picture for block placement).
- After you finished, start piecing the second row in the same way as the first but alternating the blocks vertically and horizontally three blocks.
- Don't piece the rows together yet. Wait until you have completed all the rows (NOTE: the four corner triangle units are the last ones to piece in the top, so leave them for the end).
- Do the same with the remaining rows until you finish.
- Now, sew the rows together. Join two diagonal rows (right side fabrics facing). Take much care to match seam intersections (lock them with pins if necessary). Continue joining all the rows.

For the end, sew the four corner triangles to complete the quilt row. (NOTE: the 1/4" seam allowances of the triangles will extend beyond the edge of the quilt center. Don't worry, they will disappear when you sew the border on top).

Press open with a hot steam iron. Trim remaining "dog ears" of all the side triangles.

For the border, sew two 68 3/8" by 1 1/2" fabric A strips along the top and the bottom sides of the top with a 1/4" seam allowance. Press open. Sew the other two fabric A strips along the remaining sides of the top with a 1/4" seam allowance. Press open.

Layer, quilt and bind with fabric G strips as desired (by machine or by hand).



Color Variation

While all possible care has been taken to ensure the accuracy of this pattern, we are not responsible for printing errors or the way in which individual work varies.