

Designed by Patricia Bravo

Weaving Memories

Featuring "MEMORIES FROM KANDESH" Collection



M-40



M-41



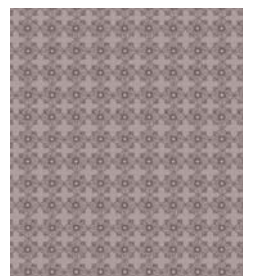
M-42



M-43



M-44



M-45

Free Project Sheet



© 2007 Courtesy of Art Gallery Quilts. All rights reserved

570 Golden Beach Dr., Golden Beach, FL 33160. TEL: (305) 420-5399 FAX: (425) 799-6103

for more fabrics and patterns visit our website www.artgalleryquilts.com

Weaving Memories

Finished Size: 62" x 62"

Quilt designed by Patricia Bravo for *Art Gallery Quilts*

All seam allowances are 1/4". Please read all directions before beginning and press carefully after each step.

Fabric Requirements: "MEMORIES FROM KANDESH" COLLECTION

Fabric A: 5/8 yd. of M-45

Fabric C: 7/8 yd. of M-41

Fabric E: 7/8 yd. of M-42

Fabric B: 7/8 yd. of M-40

Fabric D: 1-5/8 yd. of M-44

Fabric F: 1-5/8 yd. of M-43

Cutting Directions: This quilt consist of strip triangle units

For fabric A cut:

Three 11-1/4" squares. Cut them twice diagonally.
One 5-7/8" square. Cut it once diagonally.

For fabric B cut:

Five 11-1/4" squares. Cut them twice diagonally.
Two 5-7/8" square. Cut them once diagonally.

For fabric C cut:

Five 11-1/4" squares. Cut them twice diagonally.
Two 5-7/8" square. Cut them once diagonally.

For fabric D cut:

Five 11-1/4" squares. Cut them twice diagonally.
Two 5-7/8" square. Cut them once diagonally.

For fabric E cut:

Five 11-1/4" squares. Cut them twice diagonally.
Two 5-7/8" square. Cut them once diagonally.

For fabric F cut:

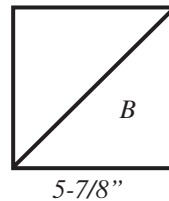
Three 11-1/4" squares. Cut them twice diagonally.
One 5-7/8" square. Cut it once diagonally.

For inner border cut:

Four 62" by 4-1/2" strips from fabric F.

For outer border cut:

Four 65" by 2-1/2" strips from fabric D.



Quilt Diagram

Strip 1

Strips Assembly:

For strip 1: (right sides together)

Sew triangles starting with one triangle B and one A. Align the base edge of triangle B with the side (or bias) edge of triangle A. Stitch along this edge (as shown below). Follow with another triangle A, aligning two side edges together and stitching. Complete Strip 1.



Quilt Top Assembly:

For strip 2 and remaining other: (right sides together)

Follow the same method of sewing as strip 1 for strip 2 and all the rest of the strips.

Borders:

Stitch along two fabric F strips along to two opposite sides of the top, for the inner border. Stitch along the remaining two strips to the other two sides. Miter. Do the same procedure for the outer border with the fabric D.

Layer, quilt and bind as desired.

While all possible care has been taken to ensure the accuracy of this pattern, we are not responsible for printing errors or the way in which individual work varies.



© 2007 Courtesy of Art Gallery Quilts. All rights reserved

570 Golden Beach Dr., Golden Beach, FL 33160. TEL: (305) 420-5399 FAX: (425) 799-6103

www.artgalleryquilts.com