

featuring #Heartlandfabrics



# Scandi







HANDBAG DESIGNED BY PAT BRAVO



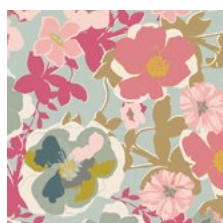
Pat Bravo

heartland<sup>+</sup>

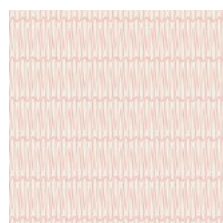
FABRICS DESIGNED BY PAT BRAVO



WARM FIELD



HRT-85300  
BLOMMA GARDEN PASTICHE



HRT-85301  
REGN DROPS SUN



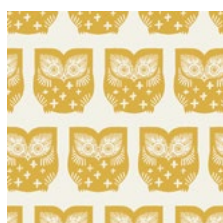
HRT-85303  
PINETRE DAYBREAK



HRT-85304  
UNN CROSS PINE



HRT-85305  
LITEN DITSY FIELD



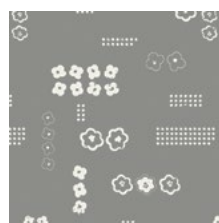
HRT-85306  
HUS HOOT GUL



HRT-85307  
DROPPAR MOONDUST



HRT-85308  
TREKANT ROWS CANDID



HRT-85309  
SCANDI PLANE GREY



HRT-85310  
DULCET PATHS PASTELL

LUCNA MEADOW



HRT-95300  
BLOMMA GARDEN GOLDEN



HRT-95302  
UNN CROSS SILVER



HRT-95303  
PINETRE FOG



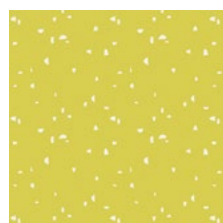
HRT-95304  
UNN CROSS OCHRE



HRT-95305  
LITEN DITSY WHISPER



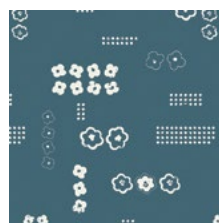
HRT-95306  
HUS HOOT GRA



HRT-95307  
DROPPAR BURST



HRT-95308  
TREKANT ROWS BREEZE



HRT-95309  
SCANDI PLANE BALTIC



HRT-95310  
DULCET PATHS MIST



© 2016 Courtesy of Art Gallery Quilts LLC. All Rights Reserved.

## FABRIC REQUIREMENTS

Fabric <b>A</b>	HRT-95309	1/2 yd.
Fabric <b>B</b>	DEN-S-2002	3/4 yd.
Fabric <b>C</b>	Kraftex	3/4 yd.

## ADDITIONAL MATERIALS

The hard Pellon 71

Double-sided fusible

Fusible fleece

Fabric Glue

### Hardware:

12 silver rivets

1 silver 1" buckle

## CUTTING DIRECTIONS

Two (2) 13" squares of Fabric **A**

Two (2) 12 1/4" squares of Fabric **B**

One (1) 7" x 13" rectangle of Fabric **B**

One (1) 6 1/4" x 12 1/4" rectangle of Fabric **B**

Four (4) 12" x 11" rectangles of Fabric **B**

Five (5) 1" x 25" strips of Kraftex

Two (2) 12" squares of Pellon 71

One 6" x 12" rectangle of Pellon. 71

Two (2) 11 3/4" squares of double-sided fusible

One (1) 5 3/4" x 11 3/4" rectangle of double-sided fusible

Two (2) 12" x 11" rectangles of fusible fleece

## CONSTRUCTION

*Sew all rights sides together with 1/2" seam allowance unless otherwise noted.*

- Fuse the Fabric **A** squares to the Pellon squares and fold over the excess fabric covering the edges of the Pellon and tacking it down with fabric glue.
- Press in 1/4" on all edges of the two 12 1/4" squares of Fabric **B**. Using the 11 3/4" squares of double-sided fusible go ahead and fuse the fabric **B** squares to the exposed side of the Pellon squares, centering the square carefully and following manufacturer instructions to fuse. These will be the front and back of the bag.
- Fuse the 7" x 13" rectangle of Fabric **B** to the 6" x 12" rectangle of Pellon, folding over edges and gluing as before. Press in 1/4" on all edges of the 6 1/4" x 12 1/4" rectangle of Fabric **B**. Using the 5 3/4" x 11 3/4" rectangle of double-sided fusible go ahead and fuse it to the exposed side of the pellon, centering it carefully. This will be the bottom of the bag.
- Take two Kraftex strips, lay them on top of each other, clip together and top stitch all around. Use a triple stitch if you are using regular thread so that it will pop out and look like a professional top-stitch. Repeat.



DIAGRAM 1

- Measure in 3" from the edges of the front & back pieces and clip or glue baste in place. There will be 4" space in between the straps. The straps should extend into the front and back pieces by 3". Top-stitch the straps in place. Starting 1/2" from the bottom of the straps mark three holes spaced 1" apart. Use an awl to (carefully) punch through the layers. Attach the rivets according to manufacturer instructions. Repeat this process for your other flap strap.

- Cut a 4" piece of Kraftex from the remaining strip and top stitch it all around the edges. Fold it in half, use an awl to punch a hole in the center of the strip at the fold line and insert the buckle. Fold it in half over the buckle and glue it together. Clip together until the glue dries. Once the glue has dried attach it to the center of the front of the bag, approximately  $\frac{1}{2}$ " below the edge of the bottom of the straps. (see diagram 2)

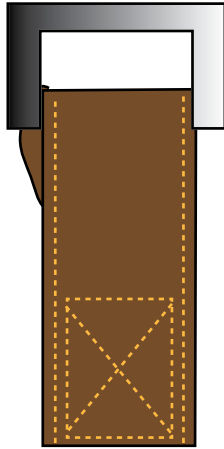


DIAGRAM 2

- Cut a 15" length from the remaining Kraftex strip and fold it in half. Draw the angled bottom of the strap where the two ends meet and top stitch all around the strip and just inside of the drawn edges. After sewing together clip off the excess on the corners evenly. Measure 1" from the angled edge and mark 6 holes every  $\frac{1}{2}$ ", then punch holes with an awl. Sew the folded edge to the center of the bag back, approximately  $\frac{1}{2}$ " above the edges of the straps. .

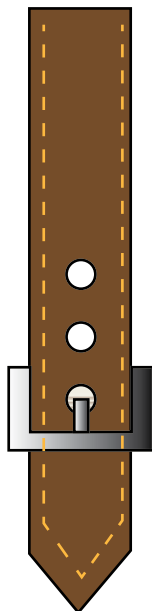


DIAGRAM 3

- Overlap the bottom of the bag approximately  $\frac{1}{2}$ " over the bottom edges of the front and back of the bag. Edge stitch and top-stitch at just less than  $\frac{1}{2}$ " to tack down both edges
- Fuse the fusible fleece to two of the 12" x 11" rectangles of Fabric **B**. Mark the center of the fabric and on the bottom make marks at 2  $\frac{1}{2}$ " in from the bottom edge.
- Draw a line from that point to the top corner, then round out the bottom corners and cut out the new shape. Cut all the 12" x 11" rectangles into this shape. Pair the fused pieces with fabric pieces, right sides together and sew all around the edges, leaving a small opening to turn. Turn the pieces right sides out and press.

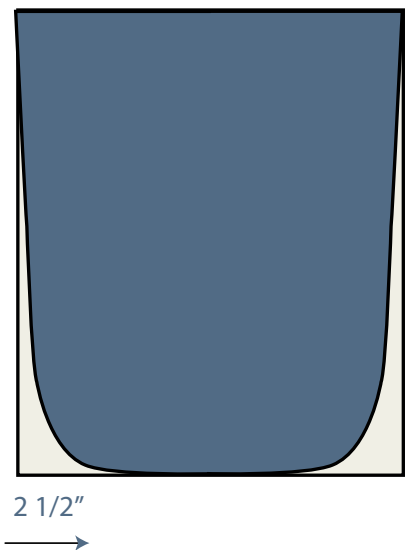


DIAGRAM 4

- Matching the center of the side pieces to the center of the bottom piece start to clip the sides to the front/bottom/back edges wrong sides together. Top stitch all around the side at  $\frac{1}{4}$ " seam allowance.
- Use a zipper foot to get closer to the edge and the corners are difficult to stitch around. Make sure to backstitch when starting and ending.
- You're done with your bag! Buckle closed and enjoy!





# Happy Sewing

#PatBravoDesign



To see more patterns, fabrics  
and lots of inspiration visit:

[patbravo.com](http://patbravo.com)

NOTE: While all possible care has been taken to ensure the accuracy of this pattern, We are not responsible for printing errors or the way in which individual work varies.

Please read instructions carefully before starting the construction of this quilt. If desired, wash and iron your fabrics before starting to cut.

© 2016 Courtesy of Pat Bravo All Rights Reserved.