

Asian Beauty

Featuring "ASIAN MARKET" Collection

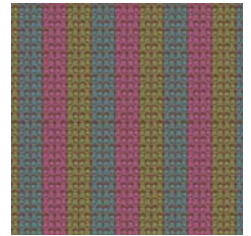
Designed by Patricia Bravo



A-80



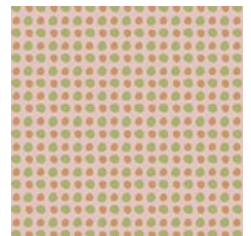
A-81



A-83



A-82



A-85



A-84

Free Project Sheet



© 2007 Courtesy of Art Gallery Quilts. All rights reserved

570 Golden Beach Dr., Golden Beach, FL 33160. TEL: (305) 420-5399 FAX: (425) 799-6103

for more fabrics and patterns visit our website www.artgalleryquilts.com



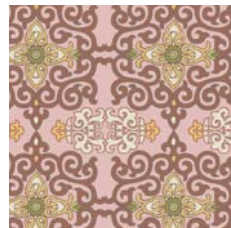
A-70



A-71



A-73



A-72



A-75



A-74

Asian Beauty

Finished Size: 58.5" x 58.5"

Block Size: 12"

Total Blocks: 16

All seam allowances are 1/4". Please read all directions before beginning and press carefully after each seam.

Quilt designed by Patricia Bravo for *Art Gallery Quilts*

Fabric Requirements: ASIAN MARKET COLLECTION

Fabric A: 1-1/4 yd. of **A-81**

Fabric B: 3/4 yd. of **A-83**

Fabric C: 3/4 yd. of **A-80**

Fabric D: 1-1/4 yd. of **A-85**

Fabric E: 3/8 yd. of **A-84**

Fabric F: 1 yd. of **A-82**

The estimate for the fabrics of the borders assumes that long strips are pieced.

Cutting Directions: This quilt consist of 2 different blocks (8 blocks 1 and 8 blocks 2).

For all of blocks 1 cut:

Sixteen 6-1/2" by 3-1/2" strips from fabric A.

Sixteen 6-1/2" squares from fabric A.

Sixteen 3-1/2" squares from fabric B.

Sixteen 3-1/2" squares from fabric D.

For all of blocks 2 cut:

Sixteen 3-1/2" squares from fabric F.

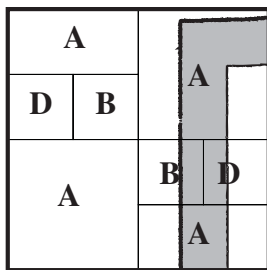
Sixteen 3-1/2" squares from fabric D.

Sixteen 3-1/2" squares from fabric A.

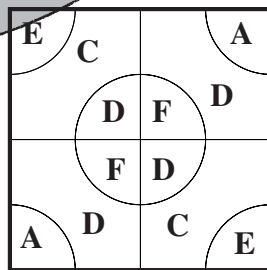
Sixteen 3-1/2" squares from fabric E.

Sixteen 6-1/2" squares from fabric D.

Sixteen 6-1/2" squares from fabric C.



Block 1



Block 2

B

For inner border cut:

Four 52" by 1-1/2" strips from fabric B.

For outer border cut:

Four 51" by 4-1/2" strips from fabric F.

Four 4-1/2" squares from fabric B.

Block Assembly: (Letters correspond to fabric styles, and to templates top)

For each of block 1: (right sides together)

Put the Template A on top of fabric F. Mark and cut the curves. Make two. Put the Template B on top of fabric D. Mark and cut the curves.

Make two. Sew fabric unit F to fabric unit D together on the curved side. Repeat this process again, making 2 equal units. Set aside.

Put the Template A on top of fabric A. Mark and cut the curves. Make two. Sew them to the opposite side of units set aside.

Put Template A on top of fabric D. Mark and cut the curves. Make two.

Put Template B on top of fabric C. Mark and cut the curves. Make two.

Sew fabric unit D to fabric unit C together on the curved seam. Repeat this process again, making 2 equal units. Set aside.

Put the Template A on top of fabric E. Mark and cut the curves. Make two. Sew them to the opposite side of units set aside.

Sew the final four square units together as shown on the block 1 diagram. **Make 8 blocks.**

For each of block 2, sew: (right sides together)

One square of fabric D to one square of fabric B.

Add one strip of fabric A. Make two of these units.

Sew each of the units to one square of fabric A. Join these two rectangular units together as show on the block 2 diagram.

Make 8 blocks.

Quilt Top Assembly:

Now, start piecing the first row, alternating between blocks 1 and 2, for a total of four blocks. For the second row, alternate the position again. Continue piecing all the rows. Now, sew the rows together.

For borders: Stitch along two fabric B strips along to two opposite sides of the top, for the inner border. Stitch along the remaining two strips to the other two sides. For the outer border, piece two fabric B squares to the ends of one fabric F strip. Do the same with the other two squares to another fabric F strip. Set aside. Piece the remaining to fabric F strips to two opposite sides of the top. To end, piece the two border units set aside.

Layer, quilt and bind as desired.

While all possible care has been taken to ensure the accuracy of this pattern, we are not responsible for printing errors or the way in which individual work varies.

© 2007 Courtesy of Art Gallery Quilts. All rights reserved

570 Golden Beach Dr., Golden Beach, FL 33160. TEL: (305) 420-5399 FAX: (425) 799-6103

www.artgalleryquilts.com

