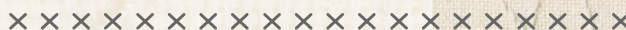
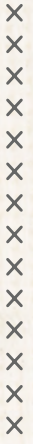


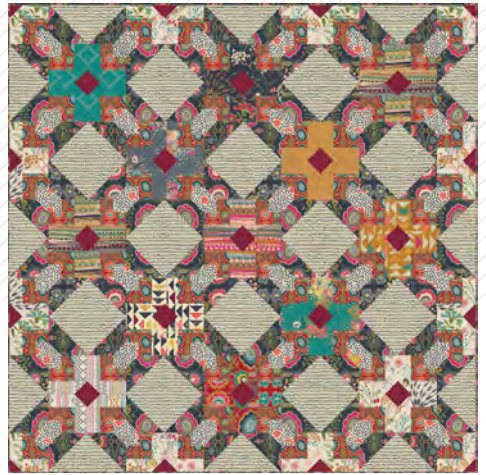
Folklore



Folklore

Pat Bravo

QUILT DESIGNED BY PAT BRAVO



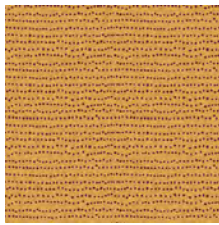
INDIEfolk

FABRICS DESIGNED BY PAT BRAVO

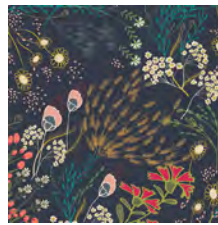
MEMORIES



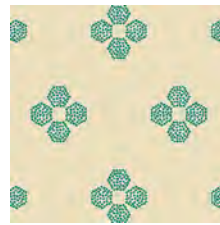
IFL-46300
KHOKHLOMA BURGUNDIA



IFL-46301
FLECKS AUBURN



IFL-46302
MEADOW DIM



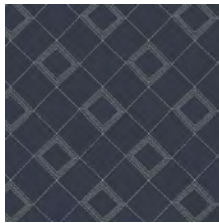
IFL-46303
DROPLET PETAL MALACHITE



IFL-46304
TRINKET VIVID



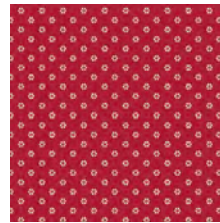
IFL-46305
MIST FLORA LUMINOUS



IFL-46307
TARTAN MIDNIGHT



IFL-46308
VERDANT BLOOM



IFL-46309
WHIRL ROUGE



IFL-46310
TROJKAT SUNRISE

FABLES



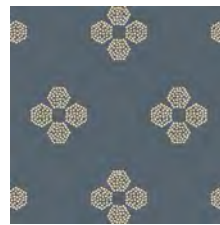
IFL-56300
KHOKHLOMA GLOOM



IFL-56301
FLECKS INDIGO



IFL-56302
MEADOW VIVID



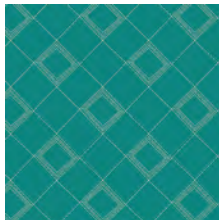
IFL-56303
DROPLET PETAL STORM



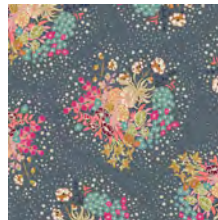
IFL-56304
TRINKET BLUSH



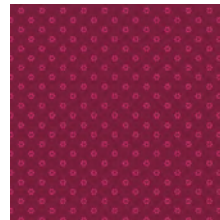
IFL-56306
PATHWAYS RICH



IFL-56307
TARTAN TEAL



IFL-56308
POWDER BLOOM



IFL-56309
WHIRL MAUVE



IFL-56310
TROJKAT DESERT



Folklore

FINISHED SIZE | 72" x 72"

FABRIC REQUIREMENTS

Fabric A	IFL-46300	1 ½ yd.
Fabric B	IFL-46301	½ yd.
Fabric C	IFL-46302	½ yd.
Fabric D	IFL-46304	½ yd.
Fabric E	IFL-46305	1 ½ yd.
Fabric F	IFL-46308	½ yd.
Fabric G	IFL-46310	½ yd.
Fabric H	IFL-56300	2 ¾ yd.
Fabric I	IFL-56301	1 ½ yd.
Fabric J	IFL-56302	1 yd.
Fabric K	IFL-56304	½ yd.
Fabric L	IFL-56306	½ yd.
Fabric M	IFL-56307	½ yd.
Fabric N	IFL-56308	½ yd.
Fabric O	IFL-56310	½ yd.
Fabric P	PE-427	½ yd.

BACKING FABRIC

IFL-56309 4 yds. (Suggested)

BINDING FABRIC

IFL-56300 (Fabric H) (included)

CUTTING DIRECTIONS

¼" seam allowances are included.

WOF means width of fabric.

Fabric A: Cut seventy-two (72) 4½ by 2½

Cut sixty-eight (68) 2½ by 2½

Fabric B: Cut eight (8) 4½ by 2½

Cut two (2) 2¾ by 2¾

Fabric C: Cut sixteen (16) 4½ by 2½

Cut six (6) 2¾ by 2¾

Fabric D: Cut sixteen (16) 4½ by 2½

Cut four (4) 2¾ by 2¾

Fabric E: Cut thirty six (36) 2¾ by 2¾

Cut seventy two (72) 2½ by 2½

Fabric F: Cut eight (8) 4½ by 2½

Cut two (2) 2¾ by 2¾

Fabric G: Cut eight (8) 4½ by 2½

Cut two (2) 2¾ by 2¾

Fabric H: Cut thirty six (36) 6¾ by 6¾

Fabric I: Cut thirty six (36) 6¾ by 6¾

Fabric J: Cut ten (10) 2¾ by 2¾

Cut forty-eight (48) 4½ by 2½

Fabric K: Cut eight (8) 4½ by 2½

Cut two (2) 2¾ by 2¾

Fabric L: Cut eight (8) 4½ by 2½

Cut two (2) 2¾ by 2¾

Fabric M: Cut eight (8) 4½ by 2½

Cut two (2) 2¾ by 2¾

Fabric N: Cut eight (8) 4½ by 2½

Cut two (2) 2¾ by 2¾

Fabric O: Cut eight (8) 4½ by 2½

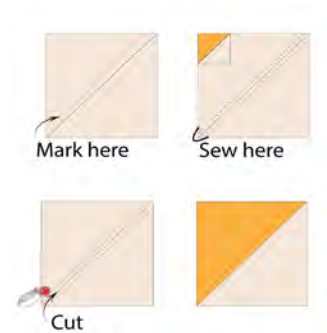
Cut two (2) 2¾ by 2¾

Fabric P: Thirty-six (36) 2¾ by 2¾

CONSTRUCTION

Sew all rights sides together with ¼" seam allowance.

- Start with the construction of the HST
 - To accomplish the HST construction take the 2¾' squares from fabrics **J**, **P**, **M** and **N**.
- DIAGRAM 1
- Using a water-soluble marker, mark a diagonal line across the wrong side of **J** and **N** squares.



- Place one of the **J** marked square, right sides together with an unmarked square from fabric **P**
- Sew ¼" on both sides of the marked line.
- Cut piece in half along the drawn line. Press seams open and trim half-square triangles into a 2½' square.
- Pair up the rest of the marked squares.
- You will end up having three **PJ**
- Repeat the same steps to construct one **PN** HST and four **PM**
- Set aside.
- You are going to repeat the previous step for the remaining 2¾' squares of fabrics **J**, **P**, **C**, **B**, **D**, **G**, **K**, **O**, **F**, **L** and **A**.

