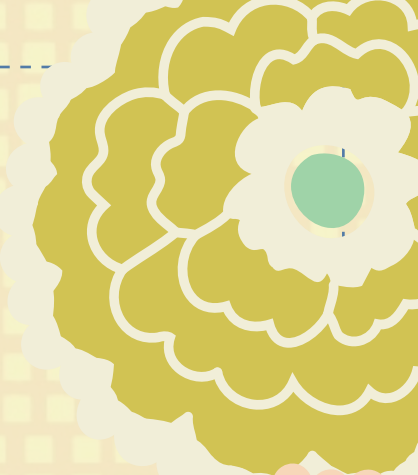




LONDON'S *calling*

{ FEATURING CARNABY STREET COLLECTION }



FREE PROJECT SHEET
 DESIGNED WITH LOVE BY *Pat Bravo*



QUILT DESIGNED
WITH LOVE BY *Pat Bravo*

LONDON'S calling

FINISHED SIZE: 72½" × 62½"

To download the instructions
for this pattern visit

artgalleryfabrics.com



by *Pat Bravo*



KIT QUANTITY

CST-3207	1 7/8 yd.	CST-3100	1/4 yd.
CST-3104	1/4 yd.	CST-3105	1/4 yd.
CST-3109	5/8 yd.	CST-3204	2/3 yd.
CST-3201	1/4 yd.	CST-3101	1/4 yd.
CST-3103	1/4 yd.	CST-3108	1/4 yd.
CST-3102	1/4 yd.	CST-3106	1/4 yd.
CST-3206	1/4 yd.	Backing	4 yd.
CST-3107	1 yd.		

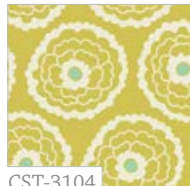
RAD LOVE



CST-3100
Brit Boutique Royal



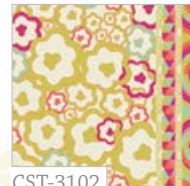
CST-3106
Soho Dandy Daytime



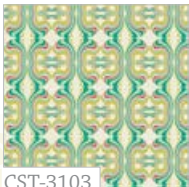
CST-3104
Girl About Town Lime



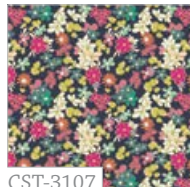
CST-3105
Go-Go London Lustrous



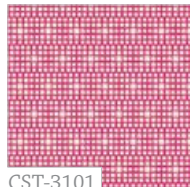
CST-3102
Psychedelia Gold



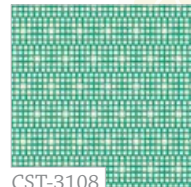
CST-3103
Groovy Vibes Citrus



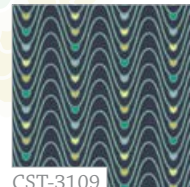
CST-3107
Ladylike Black Tea



CST-3101
King's Road Fuchsia

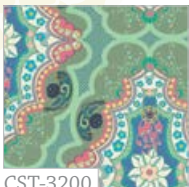


CST-3108
King's Road Turquoise



CST-3109
60s Waves Midnight

COOL PEACE



CST-3200
Brit Boutique Radiant



CST-3206
Soho Dandy Nocturnal



CST-3204
Girl About Town Rose



CST-3205
Go-Go London Powdery



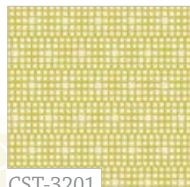
CST-3202
Psychedelia Peridot



CST-3203
Groovy Vibes Berry



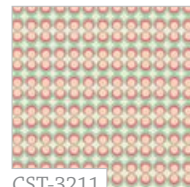
CST-3207
Ladylike Green Tea



CST-3201
King's Road Lemon



CST-3210
Retro Pop Mint



CST-3211
Retro Pop Peach





LONDON's calling

FINISHED SIZE: 72½" x 62½"

To download the instructions
for this pattern visit

artgalleryfabrics.com

FABRIC REQUIREMENTS

Fabric A	CST-3207	1 7/8 yd.
Fabric B	CST-3104	1/4 yd.
Fabric C	CST-3109	5/8 yd.
Fabric D	CST-3201	1/4 yd.
Fabric E	CST-3103	1/4 yd.
Fabric F	CST-3102	1/4 yd.
Fabric G	CST-3206	1/4 yd.
Fabric H	CST-3107	1 yd.
Fabric I	CST-3100	1/4 yd.
Fabric J	CST-3105	1/4 yd.
Fabric K	CST-3204	2/3 yd.
Fabric L	CST-3101	1/4 yd.
Fabric M	CST-3108	1/4 yd.
Fabric N	CST-3106	1/4 yd.

Backing Fabric

CST-3104 4 yd. (suggested)

Binding Fabric

CST-3109 (Fabric **C**) (included)

CUTTING DIRECTIONS

¼" seam allowances are included.

FOR COLUMNS CUT

- Four (4) 3 1/2" x 60 1/2" strips from fabric **A***
- Two (2) 8 1/2" x 60 1/2" strips from fabric **A***
- Three (3) 6 1/2" x 10 1/2" rectangles from fabric **B**
- Three (3) 6 1/2" x 10 1/2" rectangles from fabric **C**
- Two (2) 6 1/2" x 10 1/2" rectangles from fabric **D**
- Three (3) 6 1/2" x 10 1/2" rectangles from fabric **E**
- Three (3) 6 1/2" x 10 1/2" rectangles from fabric **F**
- Two (2) 6 1/2" x 10 1/2" rectangles from fabric **G**
- Three (3) 6 1/2" x 10 1/2" rectangles from fabric **I**
- Three (3) 6 1/2" x 10 1/2" rectangles from fabric **J**
- Two (2) 6 1/2" x 10 1/2" rectangles from fabric **K**
- Two (2) 3 1/2" x 60 1/2" strips from fabric **K***
- Three (3) 6 1/2" x 10 1/2" rectangles from fabric **L**
- Three (3) 6 1/2" x 10 1/2" rectangles from fabric **M**
- One (1) 6 1/2" x 10 1/2" rectangles from fabric **N**

FOR SASHING CUT

Horizontal Sashing

- Eight (8) 1 1/2" x 60 1/2" strips from fabric **H***
- two of these become the lateral borders

FOR BORDERS CUT

Top & Bottom Borders

- Two (2) 1 1/2" x 72 1/2" strips from fabric **H***

* In order to get these long strips you need to join two or more Width Of Fabric strips together.

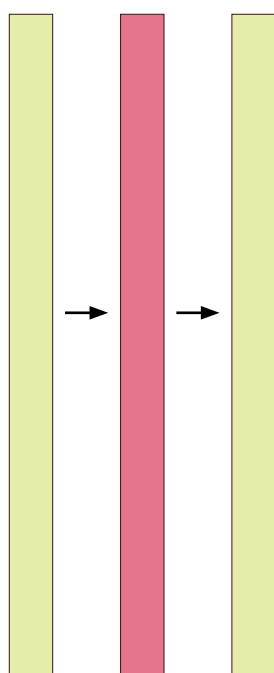
COLUMN CONSTRUCTION

(DIAGRAM 2)

Column a

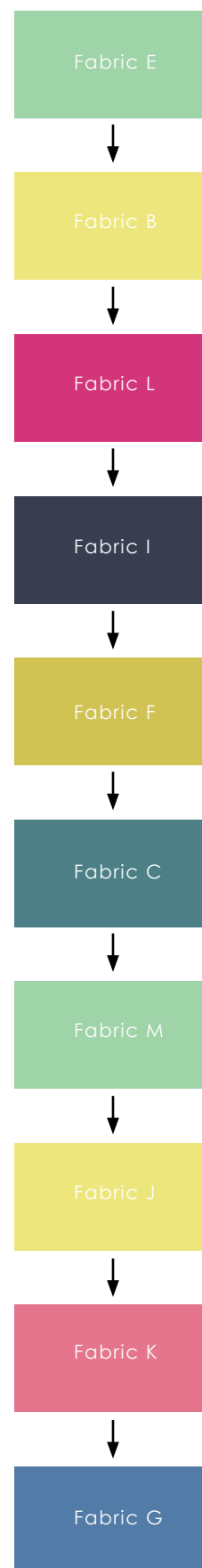
- There are two different kinds of columns to be constructed for this quilt.
- The first column (Column a) is made up of two $3\frac{1}{2}$ " x $60\frac{1}{2}$ " strips from fabric A and one $3\frac{1}{2}$ " x $60\frac{1}{2}$ " strip from fabric K.
- Sew them in the order **AKA** on the long side of the strips (DIAGRAM 1).
- Press seams open.
- Repeat in order to have two of these columns to complete the quilt. Set aside.

(DIAGRAM 1)



Column b

- The other type of column (Column b) in this quilt is made by ten of the $6\frac{1}{2}$ " x $10\frac{1}{2}$ " rectangles which were cut from all the different fabrics.
- There are three of this columns in the quilt all which mix the fabrics differently.
- For the first column attach the rectangles on the longer sides following the fabric order (top to bottom) of **EBLIFCMJKG** (DIAGRAM 2). Press all seams open.
- For the second column follow the fabric order of **CMFJGBIDEL**. Press all seams open.
- For the third column follow the fabric order of **BNIEKLCFMJ**



ASSEMBLING THE TOP

Sew all rights sides together with $\frac{1}{4}$ " seam allowance. Press open.

- Follow the cover photo to help you in the assembling of this quilt top. Start from the left following a vertical order. Press seams open as you sew. Begin with a horizontal border strip sewing it to one Column **a**.
- Continue with one sashing strip, the first Column **b**, and another sashing strip. Proceed to attach a $8\frac{1}{2}$ " x $60\frac{1}{2}$ " strip from fabric **A** then another sashing strip, the second Column **b**, another sashing strip, the remaining $8\frac{1}{2}$ " x $60\frac{1}{2}$ " strip from fabric **A**, the third Column **b**, a sashing strip, the remaining Column **a**, and end with the last horizontal border strip.
- To finish assembling this quilt top attach the top and bottom border strips by finding both of the centers and pinning before you sew. Press all seams open and remove loose threads.

QUILT ASSEMBLY

Sew right sides together.

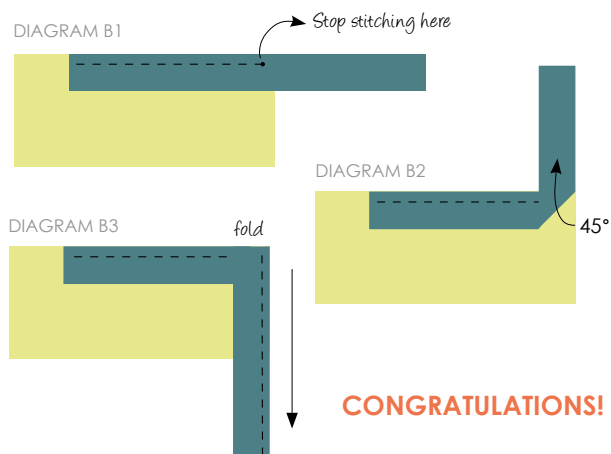
- Place BACKING FABRIC on a large surface wrong side up. Stretch it with masking tape against that surface.
- Place BATTING on top of backing fabric.
- Place TOP on top of the batting with right side facing up. Smooth away wrinkles using your hands.
- Pin all layers together and baste with basting thread, using long stitches. You can also use safety pins to join the layers.
- Machine or hand quilt starting at the center and working towards the corners. Remember that quilting motives are a matter of personal preference. Have fun choosing yours!
- After you finished, trim excess of any fabric or batting, squaring the quilt to proceed to bind it.

BINDING

Sew right sides together.

- Cut enough strips $1\frac{1}{2}$ " wide by the width of the fabric **C** to make a final strip 280" long. Start sewing the binding strip in the middle of one of the sides of the quilt, placing the strip right side down and leaving an approximated 5" tail. Sew with $\frac{1}{4}$ " seam allowance (using straight stitch), aligning the strip's raw edge with the quilt top's raw edge.

- Stop stitching $\frac{1}{4}$ " before the edge of the quilt (DIAGRAM B 1). Clip the threads. Remove the quilt from under the machine presser foot. Fold the strip in a motion of 45° and upward, pressing with your fingers (DIAGRAM B2). Hold this fold with your finger, bring the strip down in line with the next edge, making a horizontal fold that aligns with the top edge of the quilt (DIAGRAM B3). Start sewing at $\frac{1}{4}$ " of the border, stitching all the layers. Do the same in the four corners of the quilt.
- Stop stitching before you reach the last 5 or 6 inches. Cut the threads and remove the quilt from under the machine presser foot. Lay the loose ends of the binding flat along the quilt edge, folding the ends back on themselves where they meet. Press them together to form a crease. Using this crease as the stitching line, sew the two open ends of the binding with right sides together (you can help yourself marking with a pencil if the crease is difficult to see).
- Trim seam to $\frac{1}{4}$ " and press open. Complete the sewing. Turn binding to back of the quilt, turn raw edge inside and stitch by hand using blind stitch.



Feel the difference
For more free patterns visit:

artgalleryfabrics.com

NOTE: While all possible care has been taken to ensure the accuracy of this pattern, we are not responsible for printing errors or the way in which individual work varies. Please read instructions carefully before starting the construction of this quilt. If desired, wash and iron your fabrics before starting to cut.

© 2012 Courtesy of Art Gallery Quilts LLC.
All Rights Reserved.