

featuring DARE COLLECTION BY PAT BRAVO



RADIUM



FREE PATTERN

Stitching

Stitching

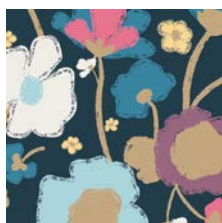
RADIUM



DARE

FABRICS DESIGNED BY PAT BRAVO

DARE TO BE BOLD



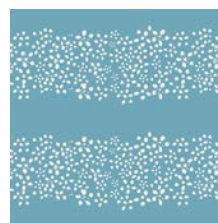
DAR-54300
BRAVE BLOOMED FIRM



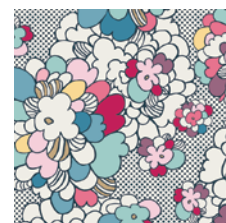
DAR-54301
WAFHING PLAID TRACED



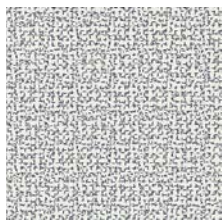
DAR-54302
TWIRLING IDEAS PUNCH



DAR-54303
A PATH OF CLARITY



DAR-54304
POP ART SPRINGBLOSSOM



DAR-54305
THREAD ON DELIGHT



DAR-54306
OPT OUT OF NORM



DAR-54307
DEFYING BUDS SEA

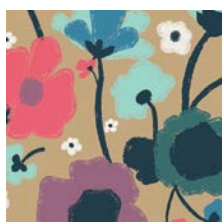


DAR-54308
REBEL BRUSHSTROKES

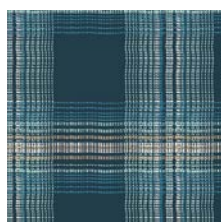


DAR-54309
DARING DOTS

DARE TO BE FUNKY



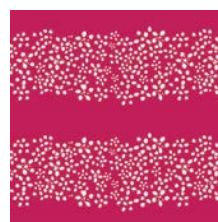
DAR-64300
BRAVE BLOOMED LIT



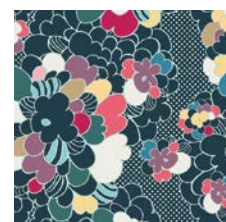
DAR-64301
WAFHING PLAID MARKED



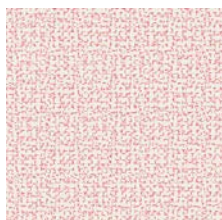
DAR-64302
TWIRLING IDEAS CLEAR



DAR-64303
A PATH OF PASSION



DAR-64304
POP ART WINTER FLOWER



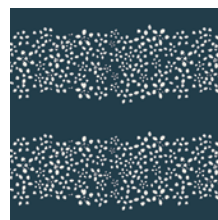
DAR-64305
THREAD ON CHARM



DAR-64306
OPT OUT OF PAR



DAR-64307
DEFYING BUDS AIR



DAR-64310
A PATH OF CERTAINTY



DAR-64311
OPEN DOORS





FINISHED SIZE | 75'x75'

PURE ELEMENTS



PE-428
NOCTURNAL



PE-434
TRANQUIL WATERS



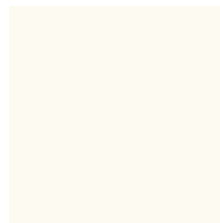
PE-451
ICY MINT



PE-420
CRYSTAL PINK

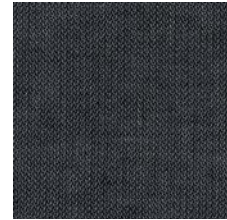


PE-439
RASPBERRY ROSE



PE-408
WHITE LINEN

THE DENIM STUDIO



DEN-D-5000
EVENING LAKEVIEW

FABRIC REQUIREMENTS

| | | |
|-----------------|------------|------------------------|
| Fabric A | PE-408 | 4 1/8 yd. |
| Fabric B | PE-428 | 1/4 yd. |
| Fabric C | PE-420 | 1/4 yd. |
| Fabric D | DEN-D-5000 | 1/3 yd. |
| Fabric E | PE-434 | 1/4 yd. |
| Fabric F | PE-439 | 1/4 yd. |
| Fabric G | PE-451 | 1/4 yd. |
| Fabric H | DAR-64306 | 1/3 yd. |
| Fabric I | DAR-64304 | 2/3 yd. |
| Fabric J | DAR-64307 | Fat Eighth (9"x22") |
| Fabric K | DAR-54305 | Fat Eighth |
| Fabric L | DAR-64311 | Fat Eighth |
| Fabric M | DAR-64303 | Fat Eighth |
| Fabric N | DAR-54302 | Fat Eighth |
| Fabric O | DAR-54309 | Fat Eighth |
| Fabric P | DAR-54306 | Fat Eighth |
| Fabric Q | DAR-64300 | Fat Eighth |
| Fabric R | DAR-54301 | Fat Eighth |
| Fabric S | DAR-54303 | Fat Eighth |
| Fabric T | DAR-64302 | Fat Eighth |
| Fabric U | DAR-64305 | Fat Eighth |
| Fabric V | DAR-54308 | 4 2/3 yds. |
| Fabric X | DAR-64310 | Fat Eighth |
| Fabric Y | DAR-54304 | Fat Eighth |

| | | |
|------------------|-----------|------------|
| Fabric Z | DAR-54307 | Fat Eighth |
| Fabric AA | DAR-64301 | Fat Eighth |
| Fabric BB | DAR-64300 | Fat Eighth |

BACKING FABRIC

DAR-54308 (Fabric **V**) *(included)*

BINDING FABRIC

DAR-64304 (Fabric **I**) *(included)*

CUTTING DIRECTIONS

*1/4" seam allowances are included.
WOF means width of fabric.*

- Four (4) 36" Squares from fabric **A**
- Eight (8) 2 1/4' X 14' strips from fabric **B**
- Eight (8) 2 1/4' X 14' strips from fabric **C**
- Eight (8) 2 1/4' X 14' strips from fabric **D**
- Four (4) 1 1/2' X 21' strips from fabric **D**
- Eight (8) 2 1/4' X 14' strips from fabric **E**
- Eight (8) 2 1/4' X 14' strips from fabric **F**

Eight (8) 2 1/4' X 14' strips from fabric **G**

Two (2) 10.5' squares from fabric **H**

Cut one pattern piece from each of the following fabrics: **H, I, J, K, L, M, N, O, P, Q, R, S, T, U, V, X, Y, Z, AA, BB**

Nine (9) 1 1/2' x WOF strips from fabric **I**

CONSTRUCTION

Sew all rights sides together with 1/4" seam allowance.

- Separate all the 2 1/4' x 14' strips into two, equal sets. We will sew the strips together, placing the next strip 2 1/4' over. Sew the first set with steps going to the right, and set 2 with steps going to the left. Sew in fabric order: **B, C, D, E, F, G**. You will have two 'staircases' going in opposite directions when completed. (DIAGRAM 1)



DIAGRAM 1

- You will be cutting 3' wide strips at a 45 degree angle. You will cut two strips from each set, 4 strips in total.
- Trim off the edge, then measure 3' from the edge and cut strips.
- Cut 2 strips from each 'staircase' for a total of 4 strips. (DIAGRAMS 2 & 3)

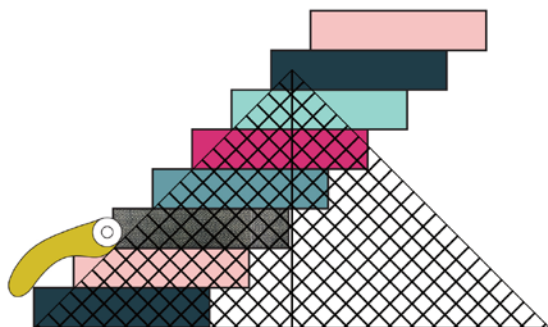


DIAGRAM 2



DIAGRAM 3

- Cut your (4) 36' squares of fabric **A** across the diagonal to get 8 triangles. (DIAGRAM 4)

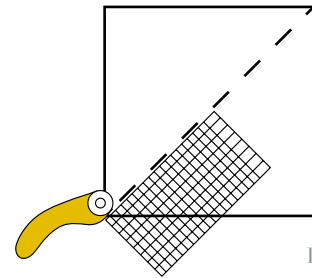


DIAGRAM 4

- Sew your 3' strips to the newly cut, long edges of the triangles, referring to the quilt illustration for placement. Double check to make sure the shapes are facing the right way. Trim ends to right angles when finished. (DIAGRAM 5)

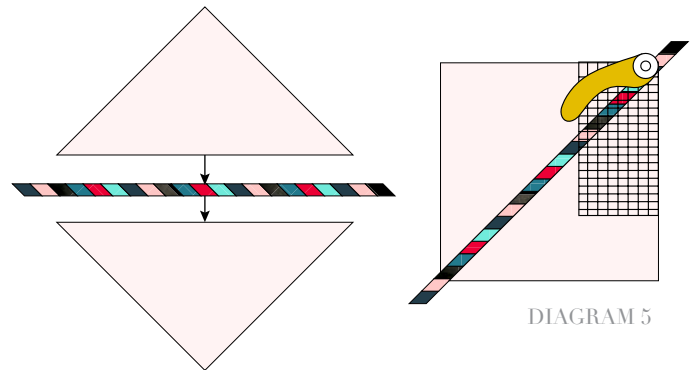


DIAGRAM 5

- Sew together all four squares, paying careful attention to match the direction of the shapes to the quilt illustration. If your strips don't match up perfectly, it's ok as we will be placing the applique above.

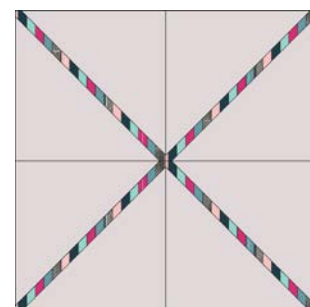


DIAGRAM 6

- Cut your two Fabric **H** Squares across the diagonal into triangles. You will have a total of 4 triangles.
- Now, sew the 21" strips of fabric **D** onto the triangles in the same way you would attach the binding, raw sides together, folding the corner according to the detailed directions under BINDING later on in the pattern directions.
- Unlike binding we will not be turning under the raw edge in back and stitching. Instead after attaching to the front, fold binding to the back matching together both raw edges of the binding and press. The trim should measure 1/2".
- Using seam lines as a guide, center the triangles along each edge of the quilt. Refer to the quilt illustration for placement. Pin and attach to the top using a blanket stitch in matching thread.

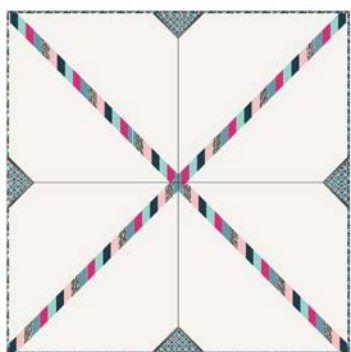


DIAGRAM 7

- Assemble the 'pie slice' pattern piece found at the end of this pattern, matching lines and letters so that your finished pattern piece measures 20" long with a 1/4" seam allowance all around.
- Cut one pattern piece of each of the Dare fabrics. Fabrics: **H, I, J, K, L, M, N, O, P, Q, R, S, T, U, V, W, X, Y, Z, AA, BB.**
- With the cover illustration for reference start sewing together the pie slices, taking care to match center points.
- Press seam allowances and press under 1/4" along the outer edge of the circle.
- Place circle in the center of the quilt, double checking distance and pinning securely.
- Attach with a small blanket stitch in matching thread.

QUILT ASSEMBLY

Sew rights sides together.

- Cut remaining Fabric **V** material into two 86" long rectangles and sew together along long edge.
- Place BACKING FABRIC on a large surface wrong side up. Stretch it with masking tape against that surface.
- Place BATTING on top of backing fabric.
- Place TOP on top of the batting with right side facing up. Smooth away wrinkles using your hands.
- Pin all layers together and baste with basting thread, using long stitches. You can also use safety pins to join the layers.
- Machine or hand quilt starting at the center and working towards the corners. Remember that quilting motifs are a matter of personal preference. Have fun choosing yours!
- After you finished, trim excess of any fabric or batting, squaring the quilt to proceed to bind it.

BINDING

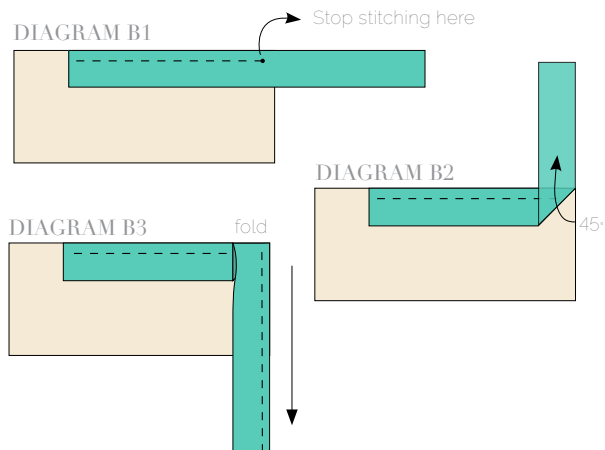
Sew rights sides together.

- Take your 9 strips cut 1 1/2" wide by the width of the fabric **I** to make a final strip at least 310" long. Start sewing the binding strip in the middle of one of the sides of the quilt, placing the strip right side down and leaving an approximated 5" tail. Sew with 1/4" seam allowance (using straight stitch), aligning the strip's raw edge with the quilt top's raw edge.
- Stop stitching 1/4" before the edge of the quilt (**DIAGRAM B 1**). Clip the threads. Remove the quilt from under the machine presser foot. Fold the strip in a motion of 45° and upward, pressing with your fingers (**DIAGRAM B2**). Hold this fold with your finger, bring the strip down in line with the next edge, making a horizontal fold that aligns with the top edge of the quilt (**DIAGRAM B3**). Start sewing at 1/4" of the border, stitching all the layers. Do the same in the four corners of the quilt.
- Stop stitching before you reach the last 5 or 6 inches. Cut the threads and remove the quilt from under the machine presser foot. Lay the loose ends of the binding flat along the quilt edge, folding the ends back on themselves where they meet. Press them together to form a crease.

BINDING

Sew rights sides together.

- Using this crease as the stitching line, sew the two open ends of the binding with right sides together (you can help yourself marking with a pencil if the crease is difficult to see).
- Trim seam to $\frac{1}{4}$ " and press open. Complete the sewing. Turn binding to back of the quilt, turn raw edge inside and stitch by hand using blind stitch.



To see more patterns, fabrics
and lots of inspiration visit:

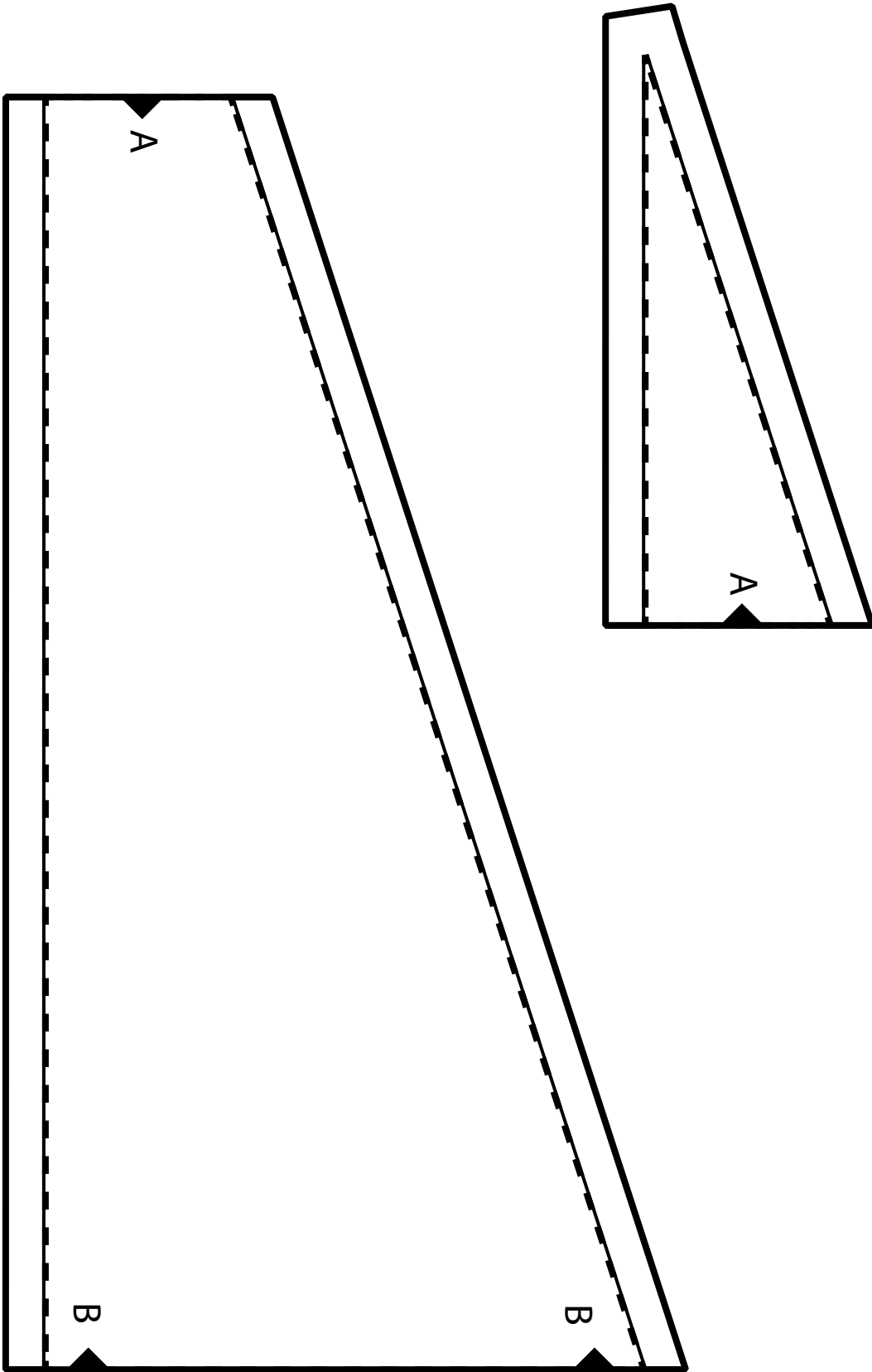
patbravo.com

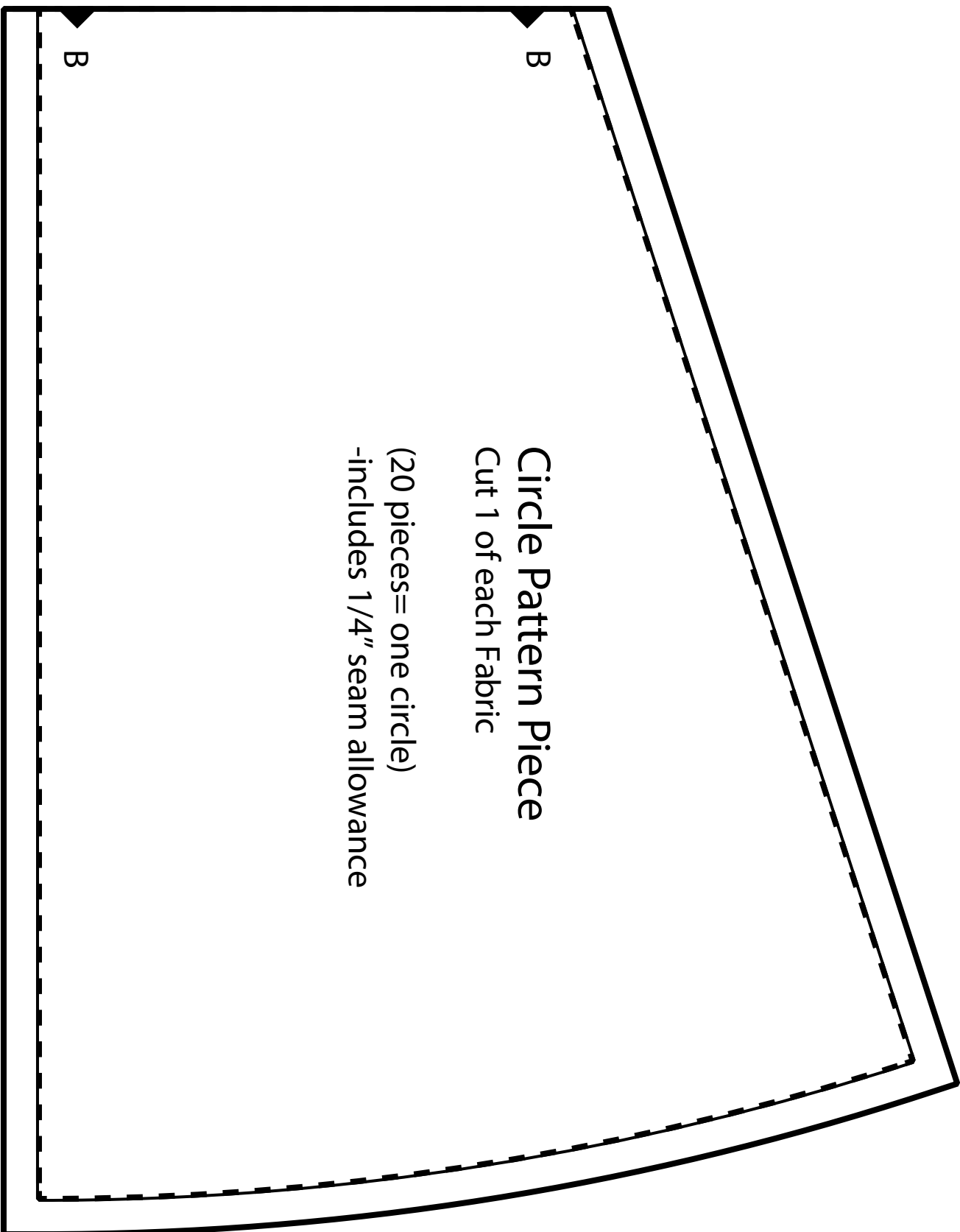
Happy Sewing

NOTE: While all possible care has been taken to ensure the accuracy of this pattern, we are not responsible for printing errors or the way in which individual work varies. Please read instructions carefully before starting the construction of this quilt. If desired, wash and iron your fabrics before starting to cut.

© 2015 Courtesy of Pat Bravo All Rights Reserved.

#PatBravoDesign





Circle Pattern Piece

Cut 1 of each Fabric

(20 pieces = one circle)

-includes 1/4" seam allowance