

Sentiments

Featuring "FEELINGS" Collection

Designed by Patricia Bravo



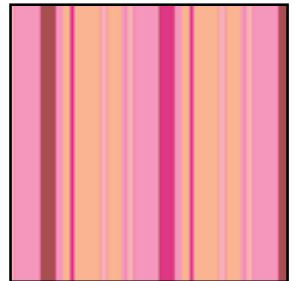
F-91



F-93



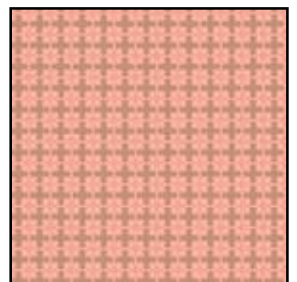
F-90



F-95



F-92



F-94



Free Project Sheet



© 2007 Courtesy of Art Gallery Quilts. All rights reserved

570 Golden Beach Dr., Golden Beach, FL 33160. TEL: (305) 420-5399 FAX: (425) 799-6103

for more fabrics and patterns visit our website www.artgalleryquilts.com

Sentiments

Finished Size: 51,5" x 51,5"

Block Size: 10"

Quilt designed by Patricia Bravo for *Art Gallery Quilts*

All seam allowances are 1/4". Please read all directions before beginning and press carefully after each seam.

Fabric Requirements: "FEELINGS" COLLECTION

Fabric A: 5/8 yd. of **F-91**

Fabric B: 3/8 yd. of **F-93**

Fabric C: 1-1/8 yd. of **F-92**

Fabric D: 3/8 yd. of **F-94**

Fabric E: 3/8 yd. of **F-90**

Fabric F: 1 yd. of **F-95**

The estimate for the fabrics of the border and the binding assumes that long strips are pieced.

Cutting Directions:

For fabric A cut:

Four 10 1/2" squares.

For fabric B cut:

Three 10 1/2" squares.

For fabric C cut:

Two 15-3/8" squares. Cut them twice diagonally (*for the sides*).

Two 8" squares. Cut them once diagonally (*for the corners*).

Three 4" squares. Cut them twice diagonally (*small triangles for the sides*).

Twelve 2-1/2" squares.

For fabric D cut:

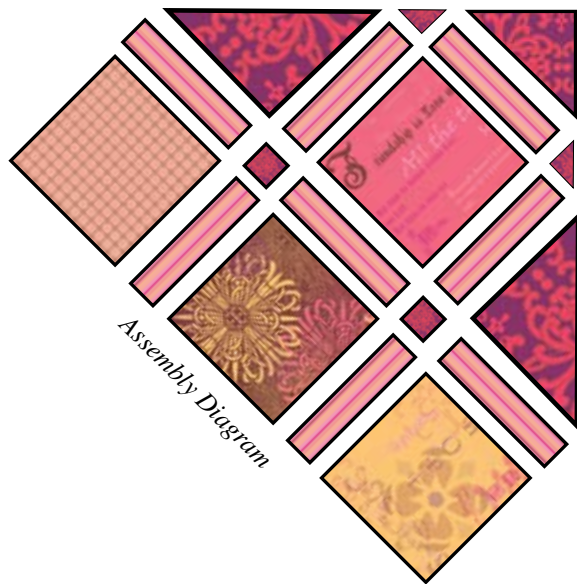
Three 10 1/2" squares.

For fabric E cut:

Three 10 1/2" squares.

For fabric F cut:

Thirty-six 10-1/2" by 2-1/2" strips.



Quilt Top Assembly:

For first row: (right sides together)

Sew two small triangles from fabric C to the ends of one fabric F sashing strip. Sew this unit to a half square triangle from fabric C for the corner. Follow adding the units for the second row as shown on the *Assembly Diagram* above (inserting sashing strips between each block).

Complete all the rows (one row would be complete sashing strips and sashing small squares; the other would be only big blocks and sashing). Then, piece all the rows together as shown on the *Quilt Diagram*.

Layer, quilt and bind as desired.



Quilt Diagram

While all possible care has been taken to ensure the accuracy of this pattern, we are not responsible for printing errors or the way in which individual work varies.

© 2007 Courtesy of Art Gallery Quilts. All rights reserved

570 Golden Beach Dr., Golden Beach, FL 33160. TEL: (305) 420-5399 FAX: (425) 799-6103

www.artgalleryquilts.com

