

X
X
X
X
X
X
X
X
X
X
X
X
X
X
X

VENTURE



FREE PATTERN

XXXXXXXXXXXXXXXXXXXXXXXXXXXX



VENTURE

Pat Bravo

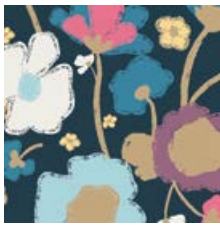
QUILT DESIGNED BY PAT BRAVO



COLOR OPTION

FABRICS DESIGNED BY PAT BRAVO

DARE TO BE BOLD



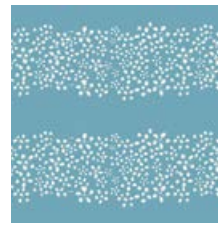
DAR-54300
BRAVE BLOOMED FIRM



DAR-54301
WAFITING PLAID TRACED



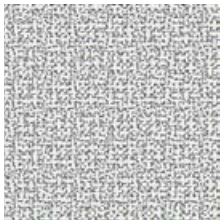
DAR-54302
TWIRLING IDEAS PUNCH



DAR-54303
A PATH OF CLARITY



DAR-54304
POP ART SRPINGBLOSSOM



DAR-54305
THREAD ON DELIGHT



DAR-54306
OPT OUT OF NORM



DAR-54307
DEFYING BUDS SEA



DAR-54308
REBEL BRUSHSTROKES



DAR-54309
DARING DOTS

DARE TO BE FUNKY



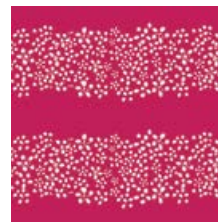
DAR-64300
BRAVE BLOOMED LIT



DAR-64301
WAFITING PLAID MARKED



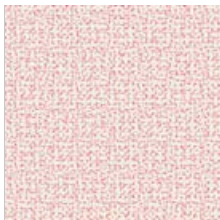
DAR-64302
TWIRLING IDEAS CLEAR



DAR-64303
A PATH OF PASSION



DAR-64304
POP ART WINTER FLOWER



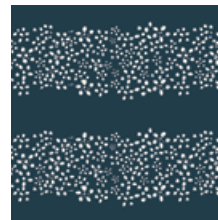
DAR-64305
THREAD ON CHARM



DAR-64306
OPT OUT OF PAR



DAR-64307
DEFYING BUDS AIR



DAR-64310
A PATH OF CERTAINTY



DAR-64311
OPEN DOORS



VENTURE

FINISHED SIZE | 60" x 72"

FABRIC REQUIREMENTS

Fabric A	DAR-64304	¾ yd.
Fabric B	DAR-64300	5/6 yd.
Fabric C	DAR-64311	1½ yds.
Fabric D	DAR-54308	¾ yd.
Fabric E	DAR-64303	½ yd.
Fabric F	DAR-54301	½ yd.
Fabric G	DAR-64310	¾ yd.
Fabric H	DAR-64305	½ yd.
Fabric I	DAR-64302	¾ yd.
Fabric J	PE-433	1 ¼ yds.

BACKING FABRIC

DAR-64307 4 1/2 yds. *(Suggested)*

BINDING FABRIC

DAR-64300 (Fabric **B**) *(included)*

CUTTING DIRECTIONS

¼" seam allowances are included.
HST means *Half Square Triangle*.

Cut from Fabric **A,C,D,G**, and **I**:

Six (6) 9 7/8" x 9 7/8" squares

Cut squares on the diagonal. You should have a total of 12 triangles in each fabric.

Cut from Fabric **B,C,E,F**, and **H**:

Six (6) 4 1/2" x 8 1/2" rectangles

Twelve (12) 2 1/2" x 4 1/2" rectangles

Cut from Fabric **J**:

Sixty (60) 2 7/8" x 2 7/8" squares

Sixty (60) 3 3/4" x 3 3/4" squares

Cut all squares from Fabric **J** on the diagonal

CONSTRUCTION

Sew all right sides together with ¼" seam allowance.

- Make five (5) HST's from the following fabrics, **A/D**, **C/D**, **C/G**, **G/I**, and **A/I**.



DIAGRAM 1

- Next take two halves of a 2 7/8" square from Fabric **J**. Sew each half to each side of a 2 1/2" x 4 1/2" rectangle from Fabric **C**. (Diagram 2.1) Repeat this same process to create two pieces that look like Diagram 2.2.



DIAGRAM 2.1



DIAGRAM 2.2

- Take a 4 1/2" x 8 1/2" rectangle from Fabric **C** and sew each piece created in Diagram 2 to each side following Diagram 3.

