

featuring #Heartlandfabrics



# Village







QUILT DESIGNED BY PAT BRAVO



Pat Bravo

# heartland

FABRICS DESIGNED BY PAT BRAVO

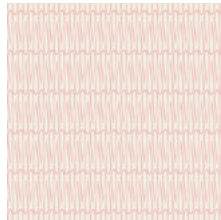


COLOR OPTION

WARM FIELD



**HRT-85300**  
BLOMMA GARDEN PASTICHE



**HRT-85301**  
REGN DROPS SUN



**HRT-85303**  
PINETRE DAYBREAK



**HRT-85304**  
UNN CROSS PINE



**HRT-85305**  
LITEN DITSY FIELD



**HRT-85306**  
HUS HOOT GUL



**HRT-85307**  
DROPPAR MOONDUST



**HRT-85308**  
TREKANT ROWS CANDID



**HRT-85309**  
SCANDI PLANE GREY



**HRT-85310**  
DULCET PATHS PASTELL

LUCNA MEADOW



**HRT-95300**  
BLOMMA GARDEN GOLDEN



**HRT-95302**  
UNN CROSS SILVER



**HRT-95303**  
PINETRE FOG



**HRT-95304**  
UNN CROSS OCHRE



**HRT-95305**  
LITEN DITSY WHISPER



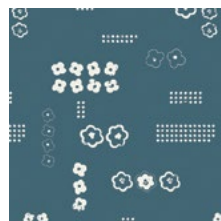
**HRT-95306**  
HUS HOOT GRA



**HRT-95307**  
DROPPAR BURST



**HRT-95308**  
TREKANT ROWS BREEZE



**HRT-95309**  
SCANDI PLANE BALTIC



**HRT-95310**  
DULCET PATHS MIST



FEEL THE DIFFERENCE © 2016 Courtesy of Art Gallery Quilts LLC. All Rights Reserved.



## FABRIC REQUIREMENTS

Fabric <b>A</b>	HRT-85307	1 yd
Fabric <b>B</b>	HRT-85303	2 yd
Fabric <b>C</b>	HRT-95300	1 ¼ yd
Fabric <b>D</b>	HRT-95305	1 yd
Fabric <b>E</b>	HRT-95309	1 yd
Fabric <b>F</b>	HRT-85304	½ yd
Fabric <b>G</b>	HRT-85309	1/3 yd
Fabric <b>H</b>	HRT-85301	1/3 yd
Fabric <b>I</b>	HRT-95302	1/3 yd
Fabric <b>J</b>	HRT-95303	5/8 yd
Fabric <b>K</b>	HRT-95307	1/3 yd
Fabric <b>L</b>	PE-411	1/8 yd
Fabric <b>M</b>	PE-469	1/8 yd.
Fabric <b>N</b>	PE-454	1/8 yd.

### BACKING FABRIC

HRT-85300 5 yd.s. *(Suggested)*

### BINDING FABRIC

HRT-95300 (Fabric **C**) *(included)*

## CUTTING DIRECTIONS

¼" seam allowances are included.  
WOF means width of fabric.

Three (3) 5 ½" x 10 ½" rectangles from Fabric **A**

Eight (8) 5 ½" x 10 ½" rectangles from Fabric **B**

One (1) 10 ½" x 5 ½" rectangle from Fabric **B**

Five (5) 10 ½" squares from Fabric **B**

Eight (8) 5 ½" x 10 ½" rectangles from Fabric **C**

One (1) 5 ½" square from Fabrics **C & D**

Three (3) 5 ½" x WOF strips from Fabrics **C & D**

Six (6) 5 ¾" x 4 ¼" rectangles from Fabrics **E, H, I & K**

Three (3) 5 ¾" x 3 ½" rectangles from Fabrics **L & N**

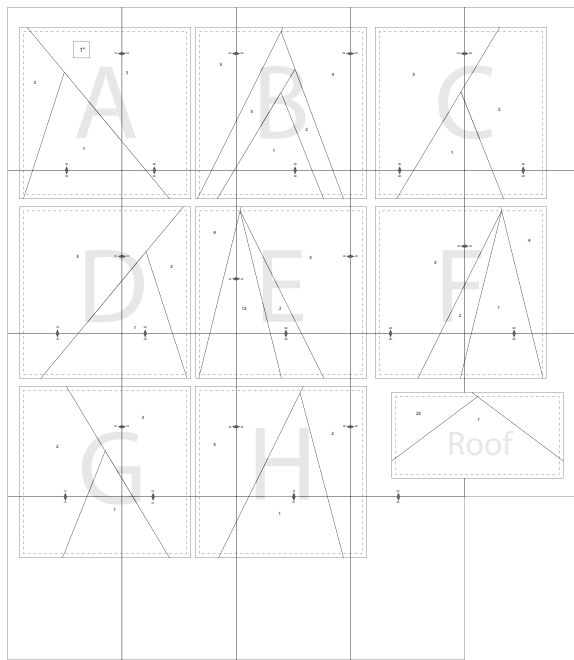
Six (6) 5 ¾" x 3 ½" rectangles from Fabric **M**

- The fabric for the house tops and mountain triangle blocks will be cut to size while sewing the foundation paper pieced patterns.
- Fabric pieces for piecing need to be cut big enough to include the pattern and a ¼" seam allowance.
- It's better to cut bigger and then trim the seam allowance to size after sewing, than to underestimate.
- Since you trim the seam allowance after sewing pieces it's not necessary to cut the pieces precisely, so long as they are big enough.
- We recommend you cut the fabric to size as you sew, however if you want extra help cutting pieces print out extra copies of the foundation patterns and cut them apart to use as cutting guides, remember to add seam allowance to them.
- It is not necessary for pieces to follow grain lines, however you may wish to keep the fabric pieces with a noticeable direction (like the pine trees and cross fabrics) on grain so that the direction remains constant where you want it to.

## CONSTRUCTION

*Sew all rights sides together with ¼" seam allowance.*

- Print out the attached pattern pages at 100% original size. You can double-check they are printing at the right size by measuring the 1" square on the first page. If it is smaller than 1" check the scaling settings on the print properties and make sure "fit to page" or similar is not marked and that it is set up at "no scaling" or "100% original size."
- Glue or tape together the rectangles, matching the page notches and → lines. See the Pattern Assembly illustration below. Cut out the mountain blocks A-H and the house roofs. Note that if you use tape you may want to use a press-cloth or press carefully so as not to melt the tape against the iron when pressing.
- Print out: 12 roof patterns, 4 of Block A & B, 3 of Block C, 2 of Block D & F, and 1 of Blocks E, G and H.



### • General Paper Piecing Instructions:

- You will be sewing on the printed side of the paper with the fabric underneath, the numbers are the order you will sew in and the lines are your sewing lines.
- Place the fabric for piece #1 with the wrong side of the fabric against the back of the paper, pin in place and hold the paper up to a desk lamp or window to look through and make sure that the fabric is covering the sewing lines with more than ¼" excess all around.
- Cut out a fabric piece for #2 that covers the pattern and seam allowance. Pin it against the fabric for piece #1 on the sewing line, right sides together, flip it open to double-check that when it's sewn on the line it will completely cover the piece (and seam allowance).
- After checking, turn the paper over printed side up and sew the line between piece #1 and #2, going a few stitches beyond the line when starting and stopping. Make sure you sew with a short stitch length so that the paper is easier to remove at the end.
- Turn the paper over, fold the paper back at the sewn line, measure out ¼" from the seam and trim excess fabric with a rotary cutter or scissors.
- Unfold the pattern, flip the fabric open and press it with a dry iron.
- Continue piecing together the rest of the pattern pieces in the same way you added piece #2. Leave fabric extending beyond the outside

- Edges of the pattern section while piecing and when finished sewing the whole block go ahead the trim to the seam allowance lines included around the pattern.

### • Building the Houses:

- Piece together the bottoms of the houses. Match together pairs of 5 ¾" x 4 ¼" rectangles (sides of houses) from Fabrics **E, H, I & K** with the corresponding 5 ¾" x 3 ½" rectangles from Fabrics **L, M & N** in between them (the doors of houses). Fabric **E & L** together. Fabric **H & M** together. Fabric **I & N** together. Fabric **K & M** together.

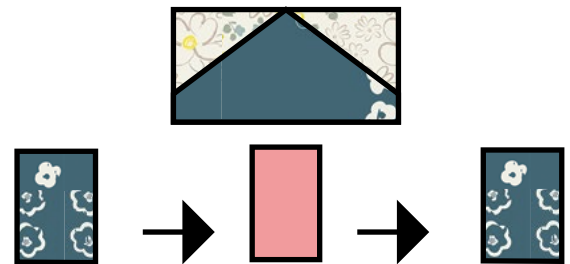


DIAGRAM 1

- Cut out your 12 paper piecing patterns for the roof and assemble them according to the paper piecing instructions. Match (3) Fabric **E** roofs with fabric **D** background. Match (1) Fabric **H** roof with fabric **C** background. Match (1) Fabric **H** roof with fabric **D** background. Match (2) Fabric **I** roofs with fabric **D** background. Match (1) Fabric **I** roof with fabric **B** background. Match (1) Fabric **K** roof with fabric **B** background. Match (1) Fabric **K** roof with fabric **C** background. Match (1) Fabric **K** roof with fabric **D** background.
- Match the house tops and bottoms and sew together.

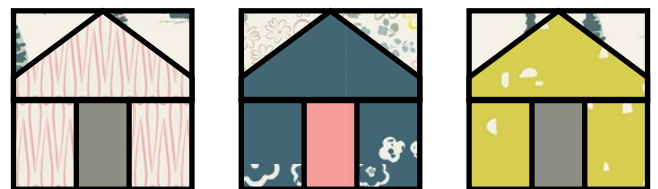
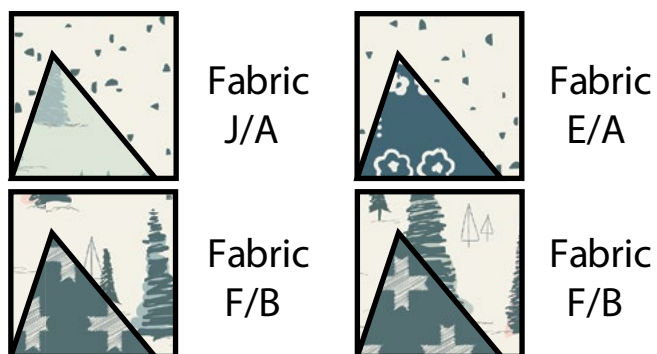


DIAGRAM 2

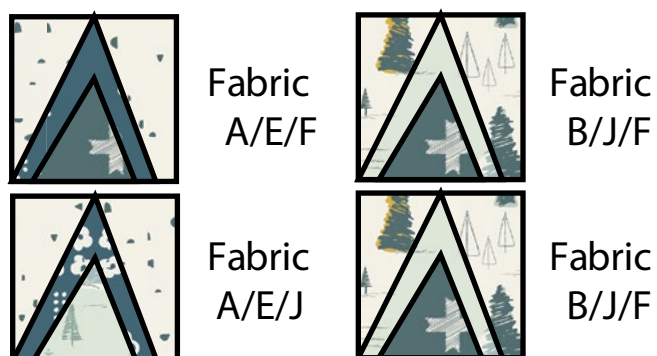
### • Making the Mountains:

- Gather your mountain block foundation paper patterns and referencing the diagram below begin to construct your mountains.

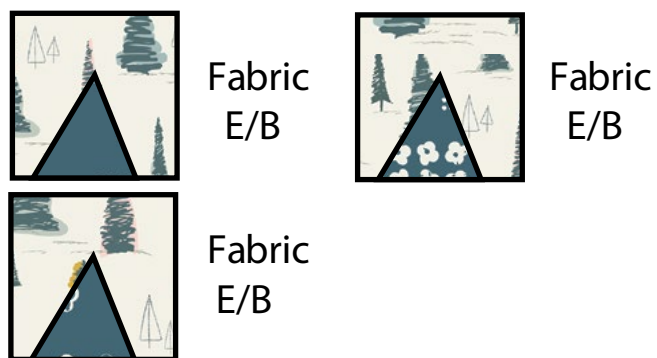
Template A x 4



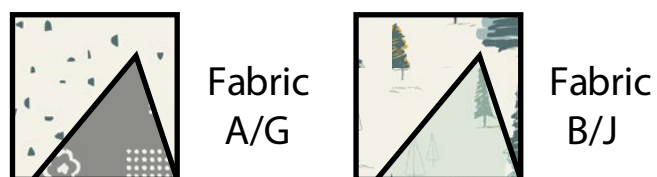
Template B x 4



Template C x 3



Template D x 2



Template E x 1



Template F x 2



Template G x 1



Template H x 1



DIAGRAM 3

• **Alternative Mountain Construction:**

- Alternatively, you could choose to do improvisational pieced mountain blocks if you prefer to work in a more free-form way and avoid too much paper piecing. If you go this route keep in mind that finished blocks must measure 10 1/2" square and that to keep the same look for mountains up near the "sky" the background should be Fabric A and for mountains within the middle of the mountain range the background should be the "forest," ie. Fabric B.

• **General Construction:**

- Sew your WOF strips of Fabrics C & D together lengthwise. Press them and then cross-cut the strip set every 5 1/2". This will give you 21 pieced units. For the 22nd unit go ahead and sew together the Fabric C & D 5 1/2" squares.



DIAGRAM 4



- Sew together the 10 ½" high x 5 ½" long rectangle from Fabric B with a 5 ½" x 10 ½" rectangle from Fabric C along the 10 ½" side

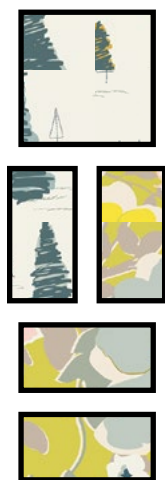
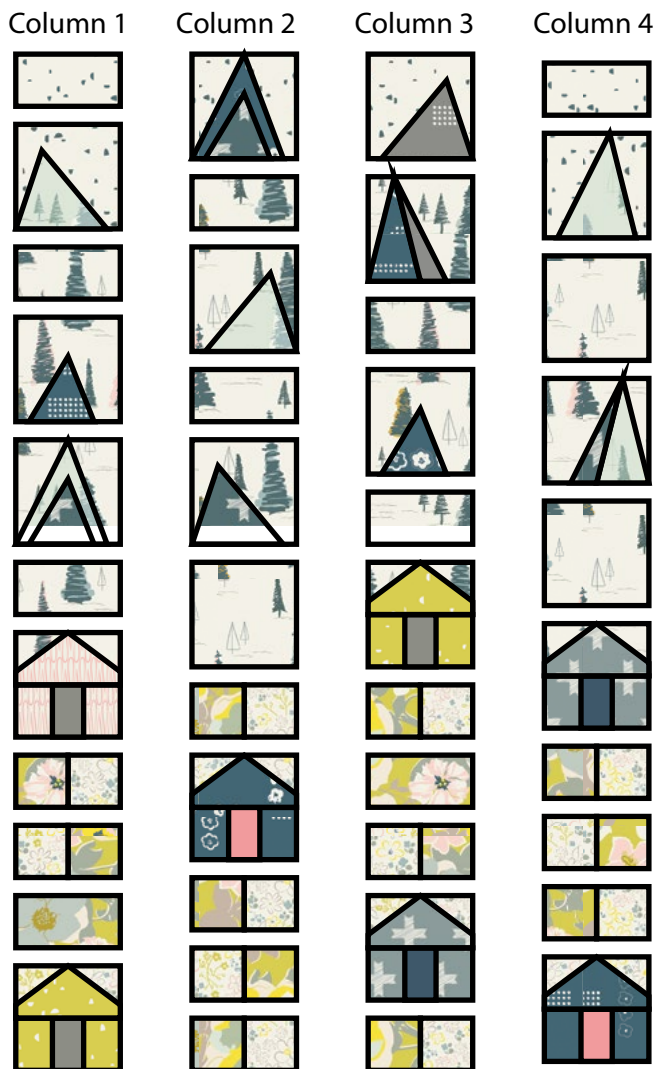


DIAGRAM 5

#### • Piecing the Columns:

- Now we are ready to start really making our Village come to life! We will sew the blocks together into 7 columns, and then sew the columns together into the quilt top. Refer to the diagrams on the following pages for piecing order.



Column 5



Column 6



Column 7



DIAGRAM 6

## QUILT ASSEMBLY

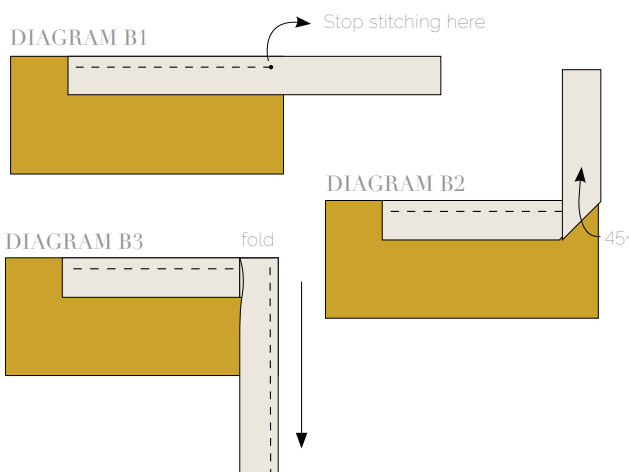
*Sew rights sides together.*

- Place BACKING FABRIC on a large surface wrong side up. Stretch it with masking tape against that surface.
- Place BATTING on top of backing fabric.
- Place TOP on top of the batting with right side facing up. Smooth away wrinkles using your hands.
- Pin all layers together and baste with basting thread, using long stitches. You can also use safety pins to join the layers.
- Machine or hand quilt starting at the center and working towards the corners. Remember that quilting motifs are a matter of personal preference. Have fun choosing yours!
- After you finished, trim excess of any fabric or batting, squaring the quilt to proceed to bind it.

## BINDING

*Sew rights sides together.*

- Cut enough strips 1 ½" wide by the width of the fabric to make a final strip 310" long. Fold strip in half and press. Start sewing the binding strip in the middle of one of the sides of the quilt, placing the strip right side down with the fold edge of your binding facing in and leaving an approximated 5" tail. Sew with ¼" seam allowance (using straight stitch), aligning the strip's raw edge with the quilt top's raw edge.
- Stop stitching ¼" before the edge of the quilt (**DIAGRAM B1**). Clip the threads. Remove the quilt from under the machine presser foot. Fold the strip in a motion of 45° and upward, pressing with your fingers (**DIAGRAM B2**). Hold this fold with your finger, bring the strip down in line with the next edge, making a horizontal fold that aligns with the top edge of the quilt (**DIAGRAM B3**). v
- Start sewing at ¼" of the border, stitching all the layers. Do the same in the four corners of the quilt.
- Stop stitching before you reach the last 5 or 6 inches. Cut the threads and remove the quilt from under the machine presser foot. Lay the loose ends of the binding flat along the quilt edge, folding the ends back on themselves where they meet. Press them together to form a crease. Using this crease as the stitching line, sew the two open ends of the binding with right sides together (you can help yourself marking with a pencil if the crease is difficult to see).
- Trim seam to ¼" and press open. Complete the sewing. Turn binding to back of the quilt, turn raw edge inside and stitch by hand using blind stitch.



# Happy Sewing

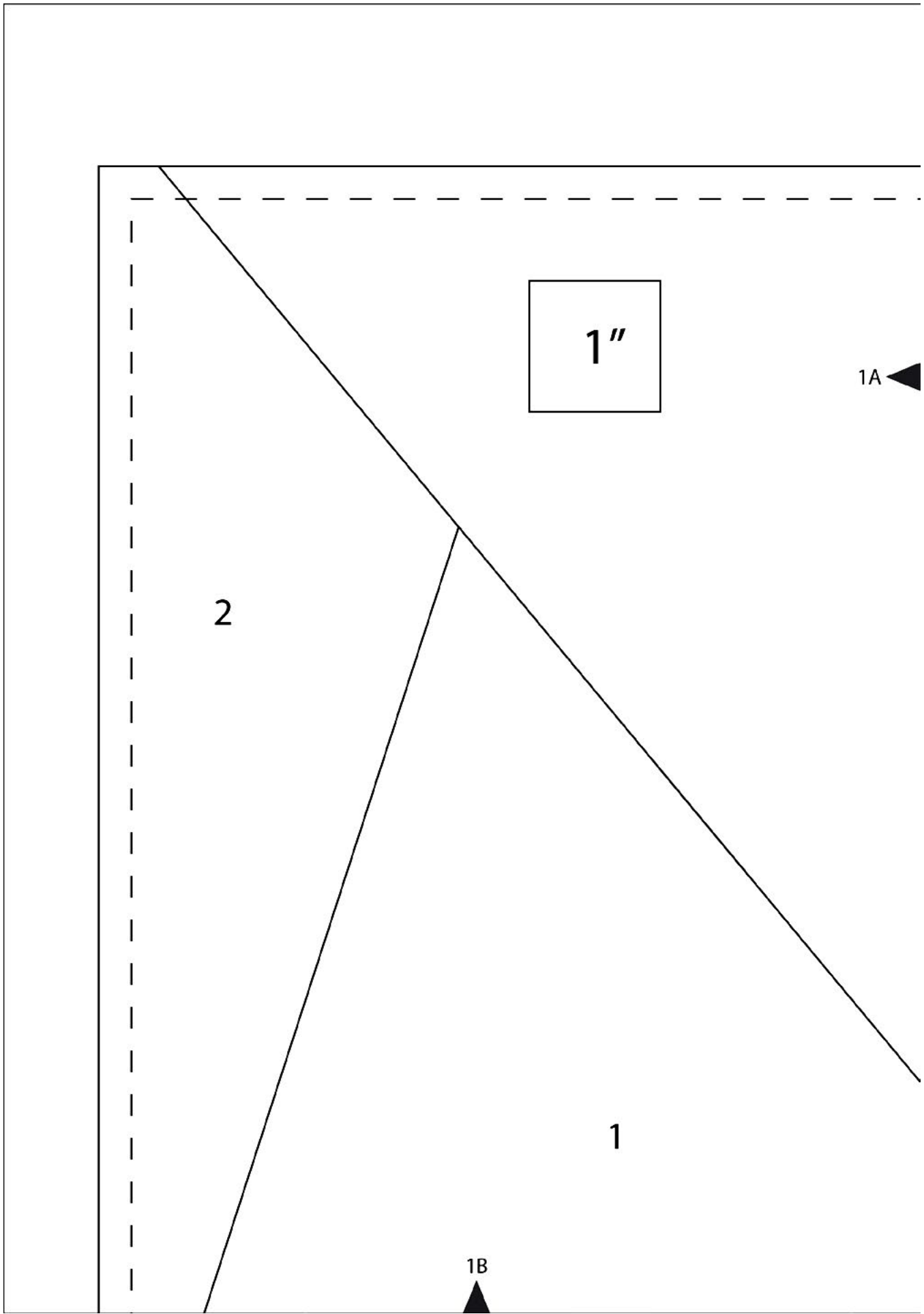
#PatBravoDesign



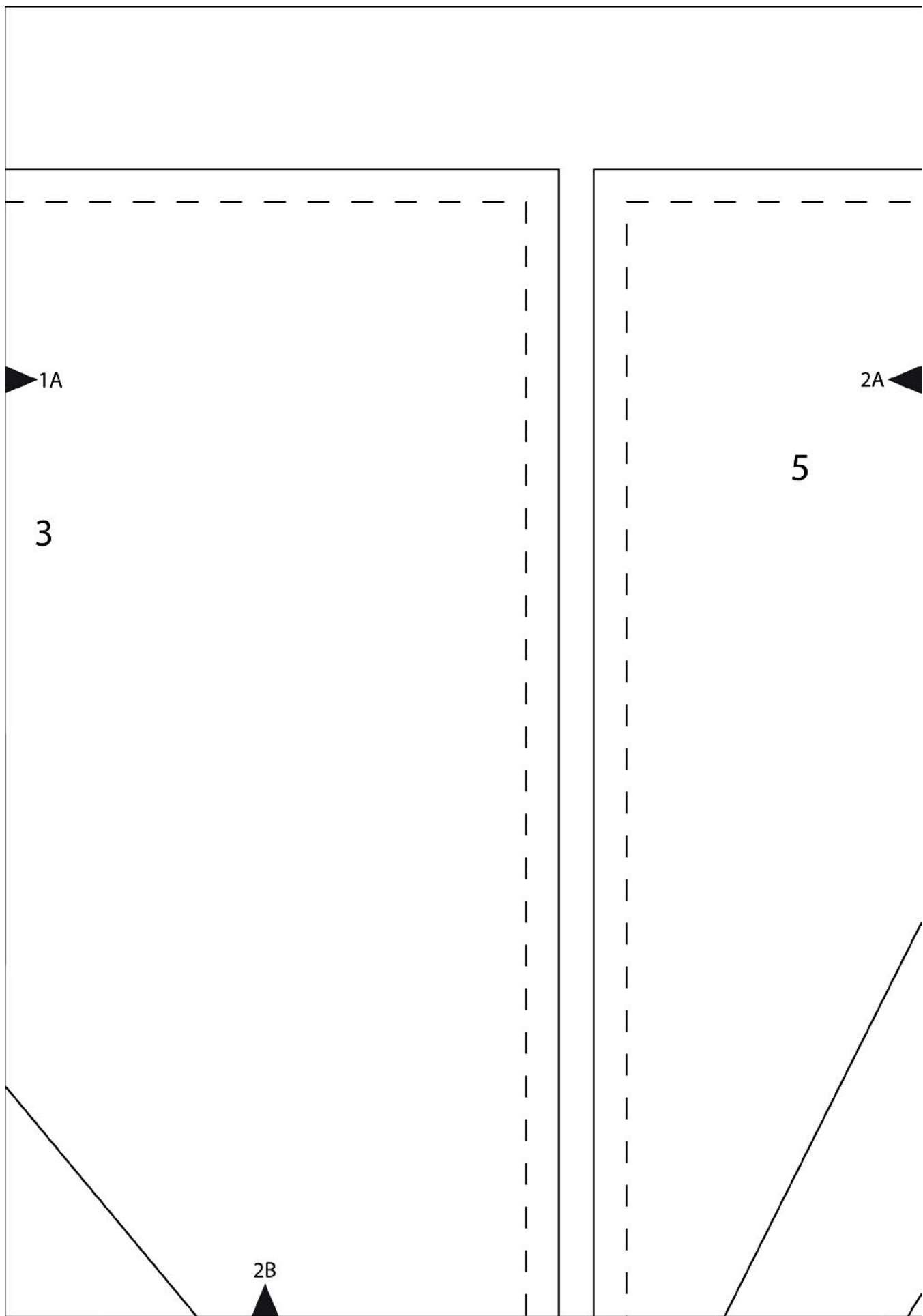
To see more patterns, fabrics  
and lots of inspiration visit:

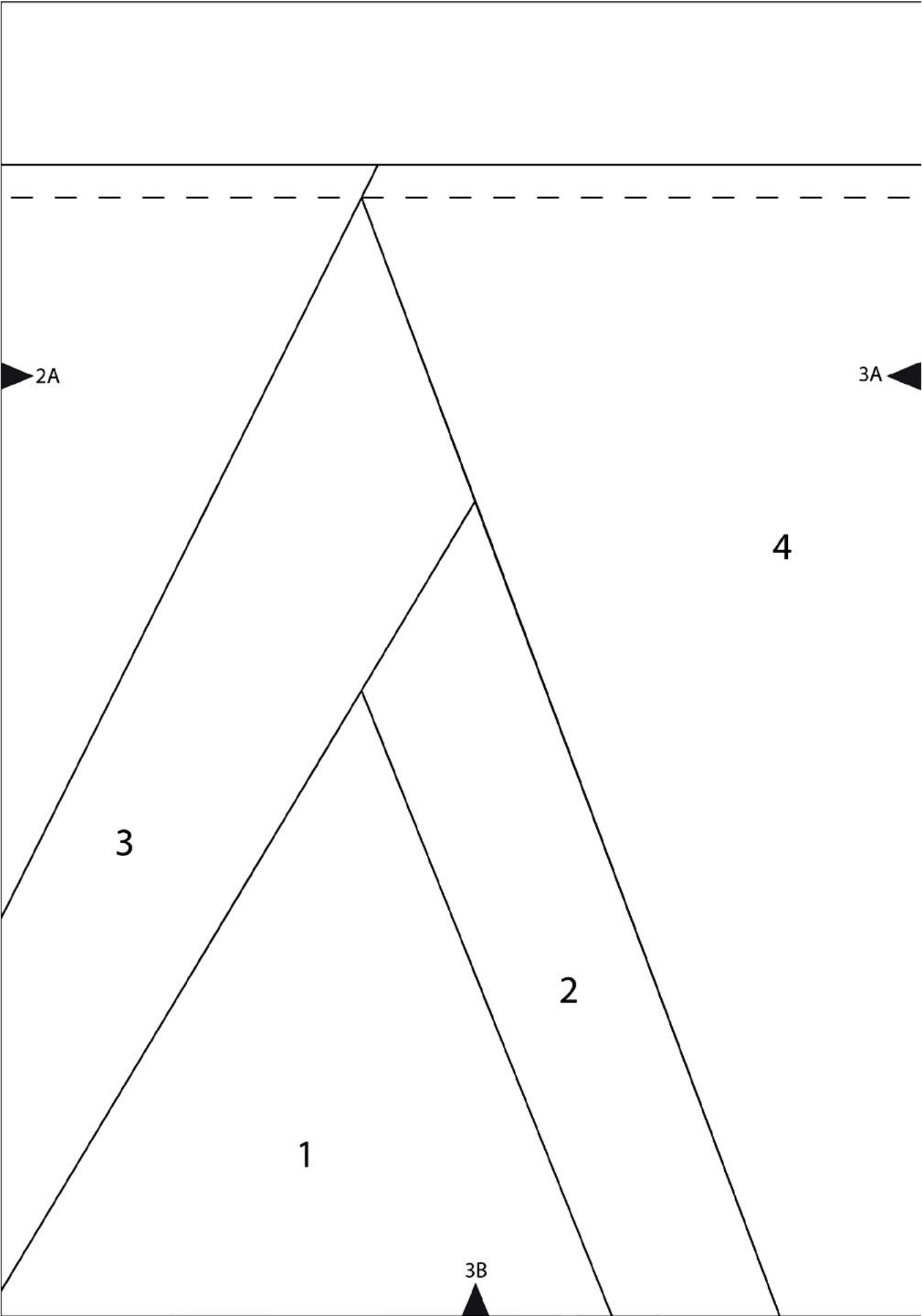
[patbravo.com](http://patbravo.com)

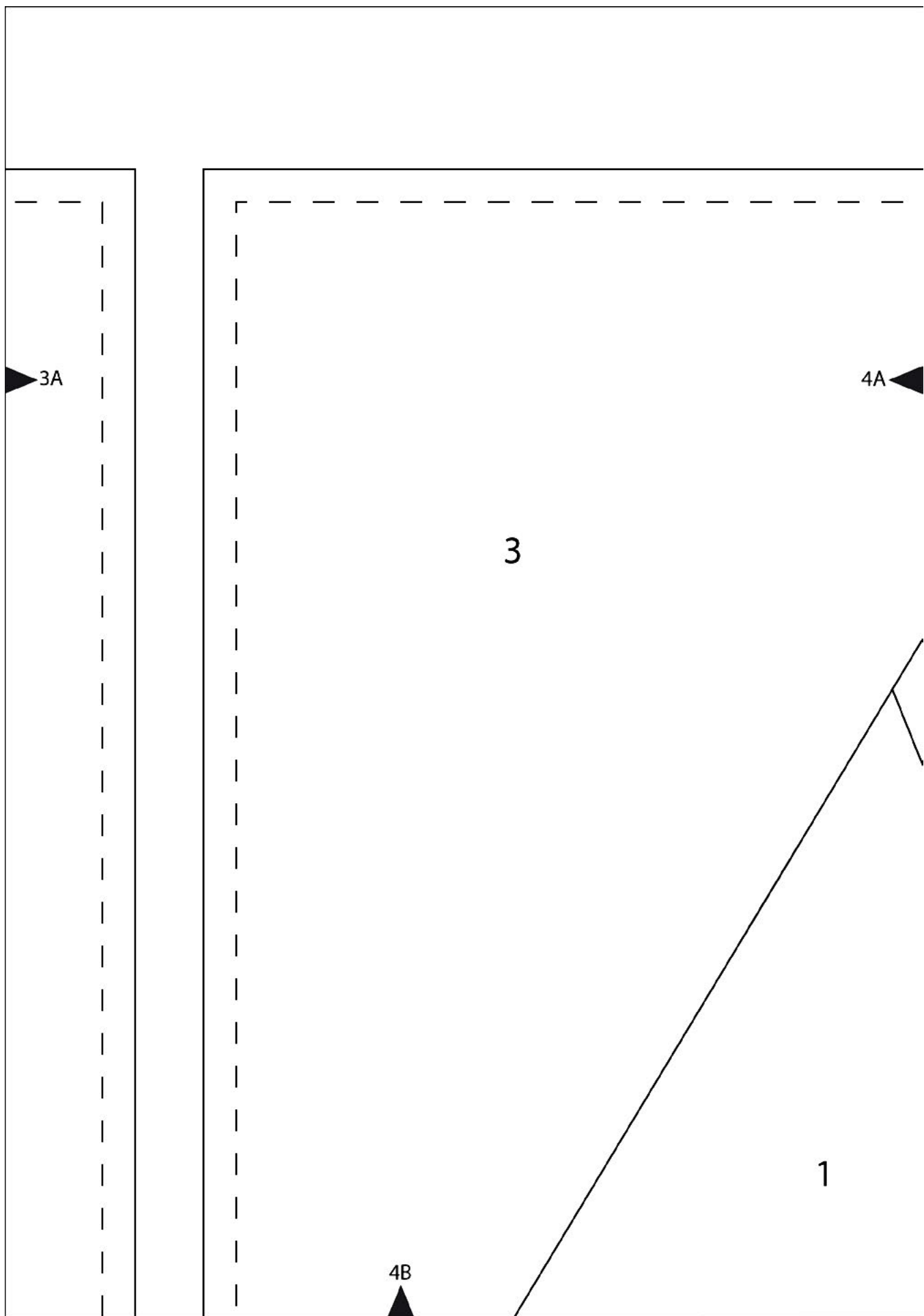
NOTE: While all possible care has been taken to ensure the accuracy of this pattern, we are not responsible for printing errors or the way in which individual work varies. Please read instructions carefully before starting the construction of this quilt. If desired, wash and iron your fabrics before starting to cut.



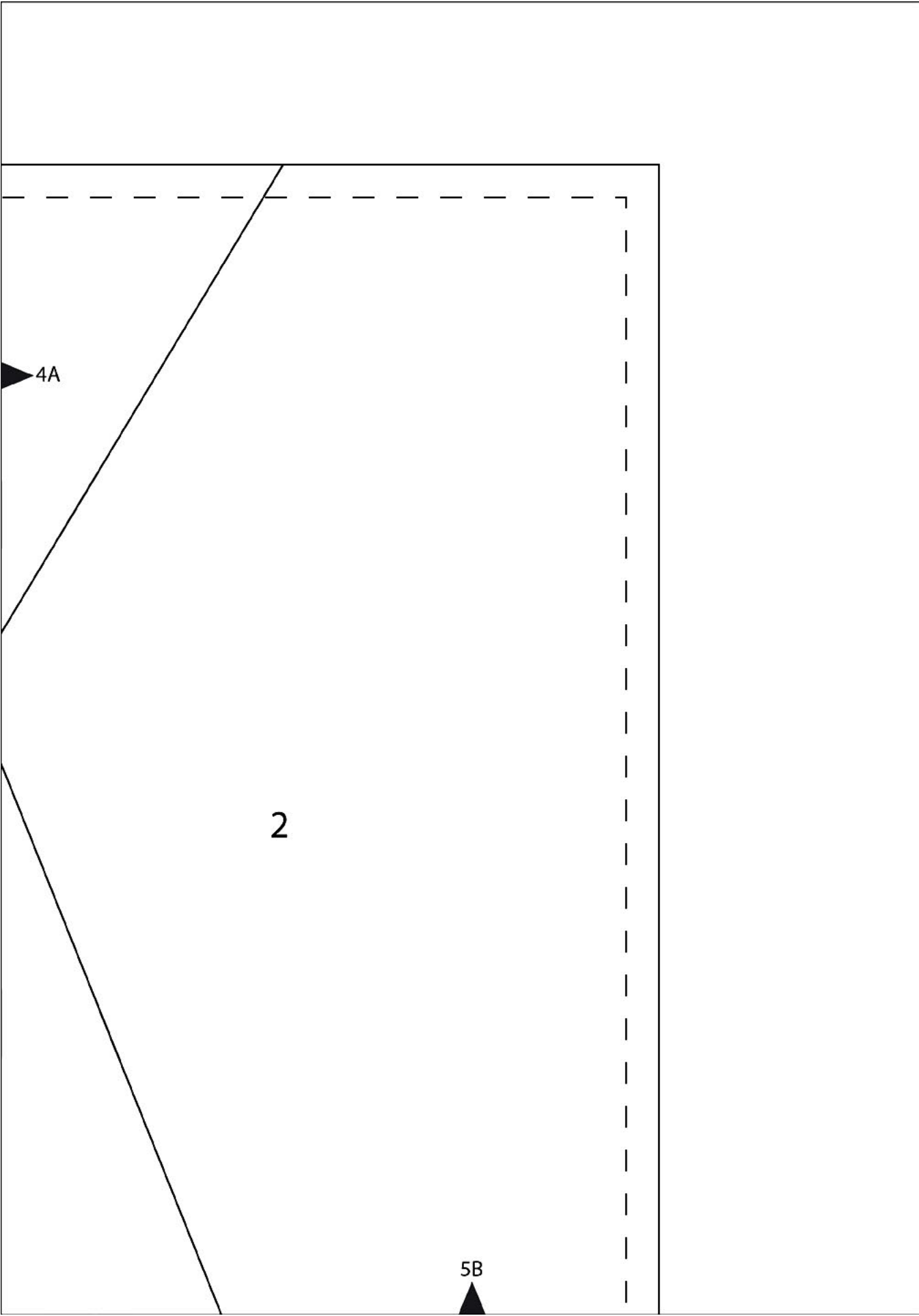


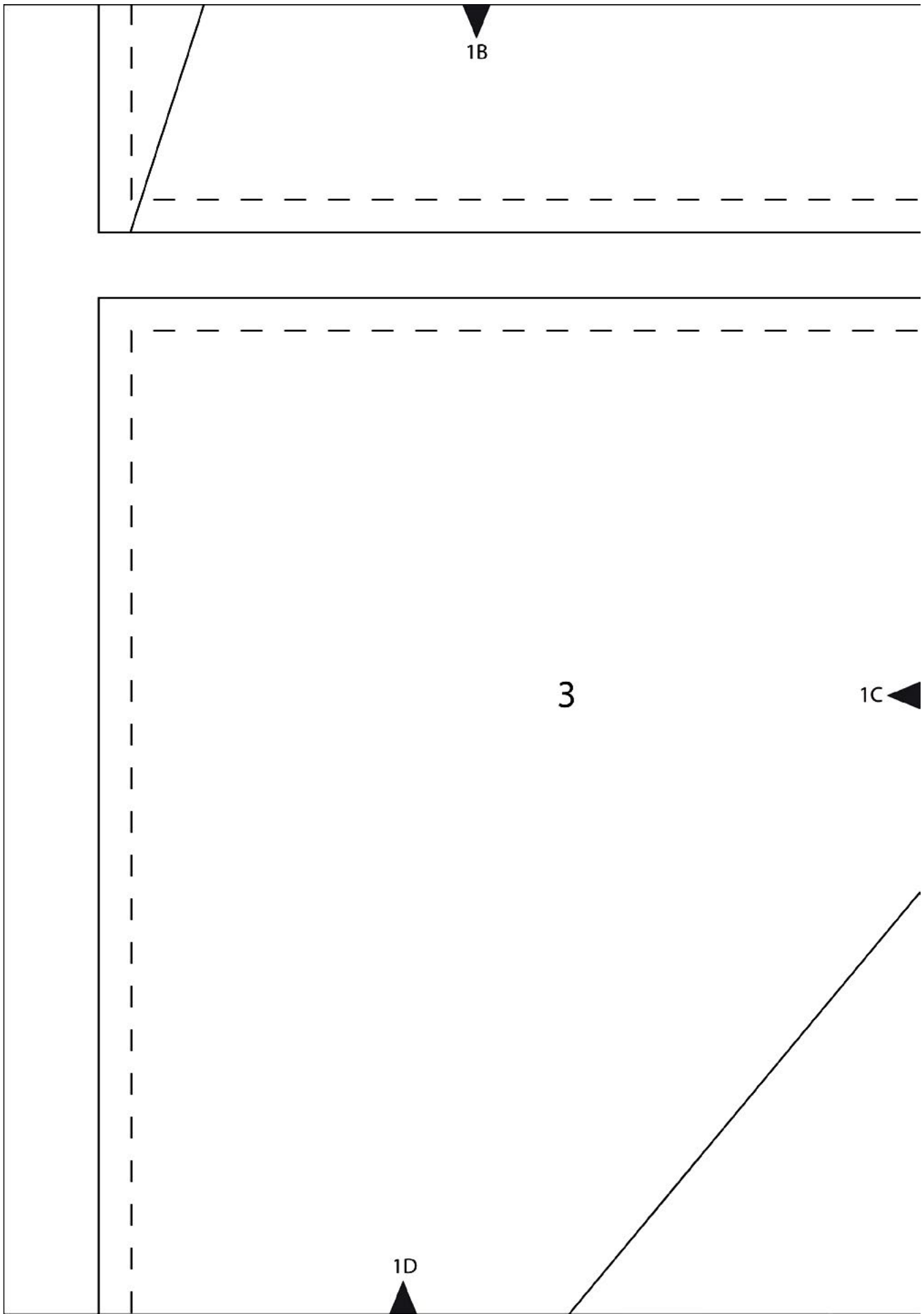


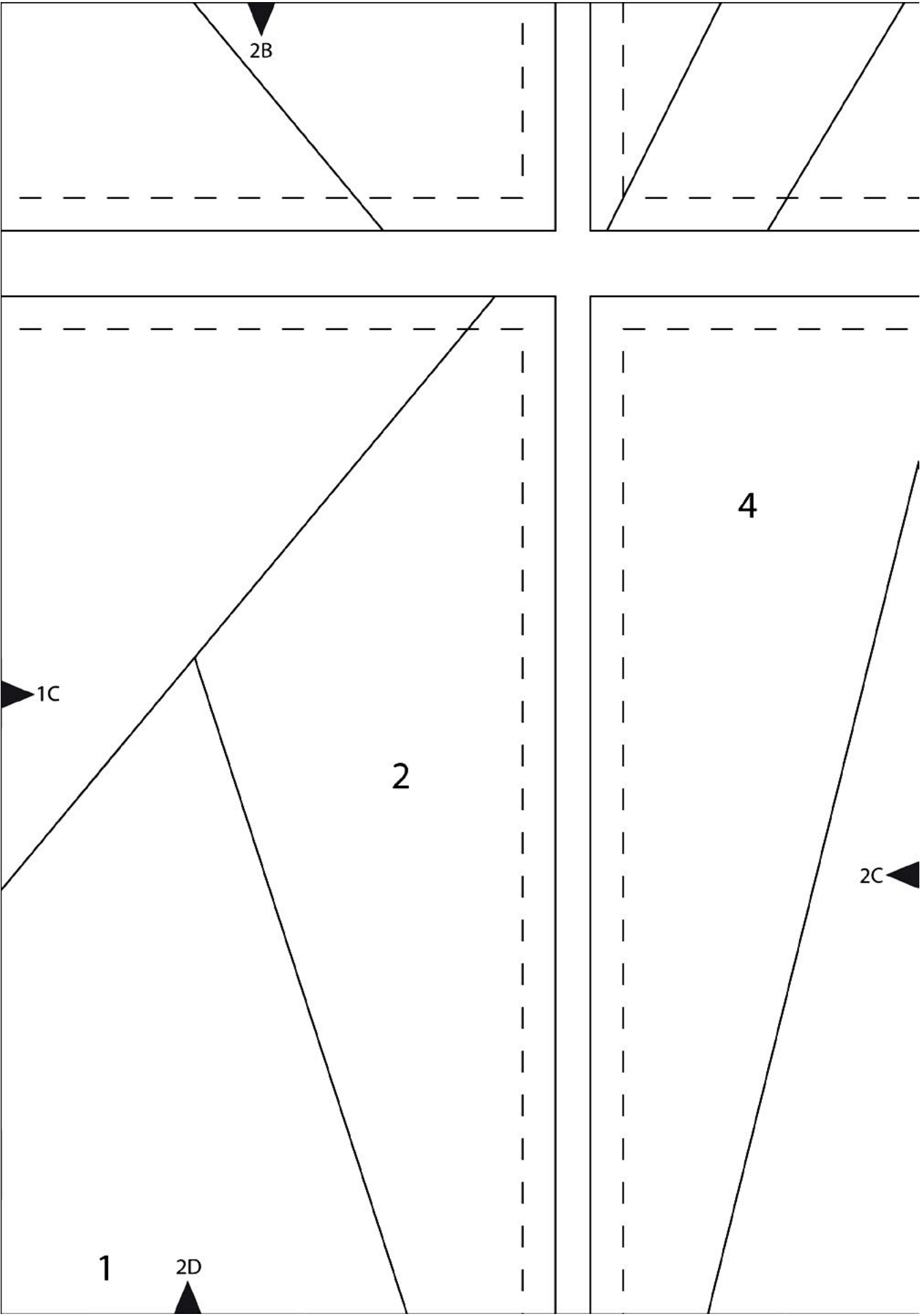




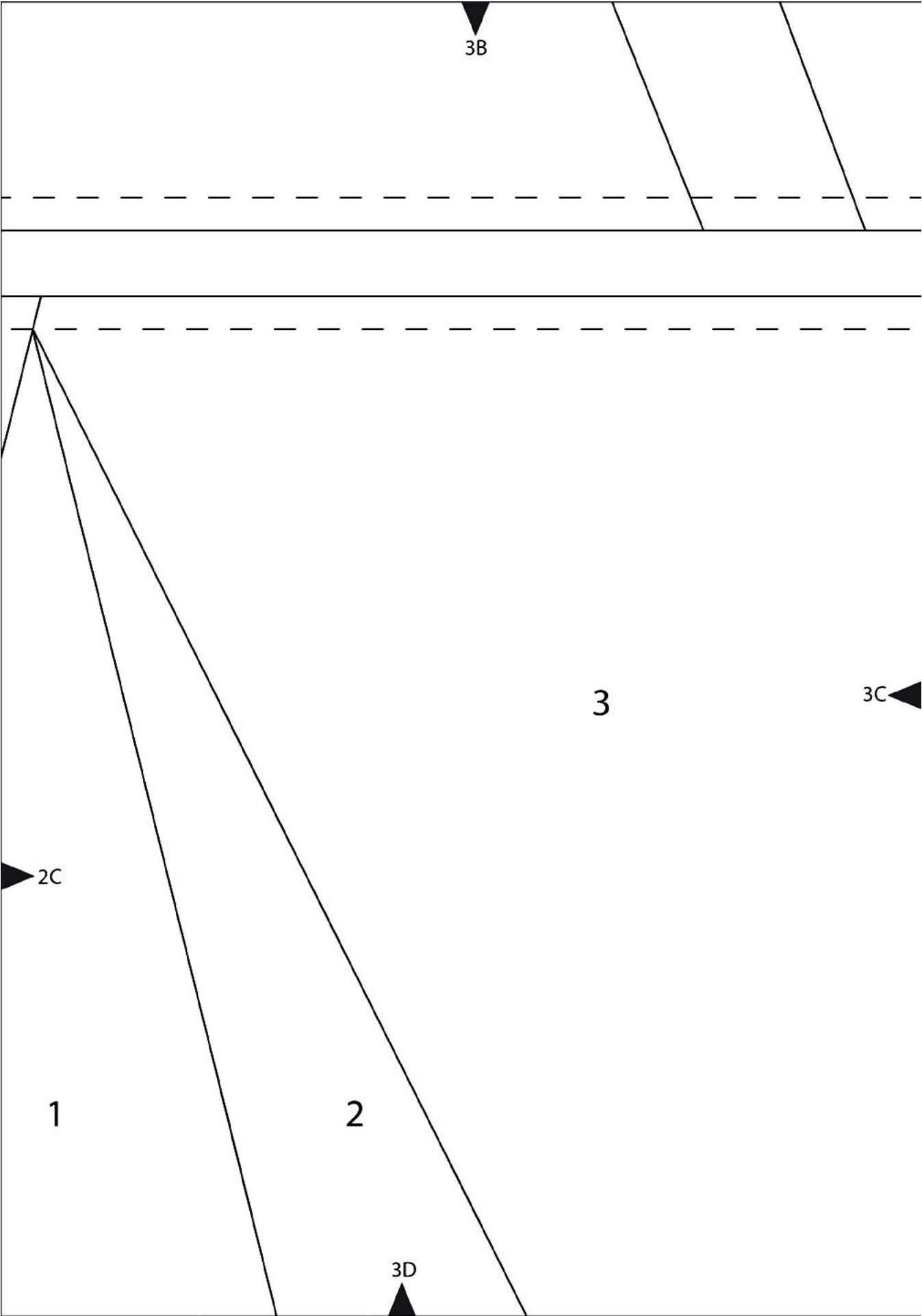


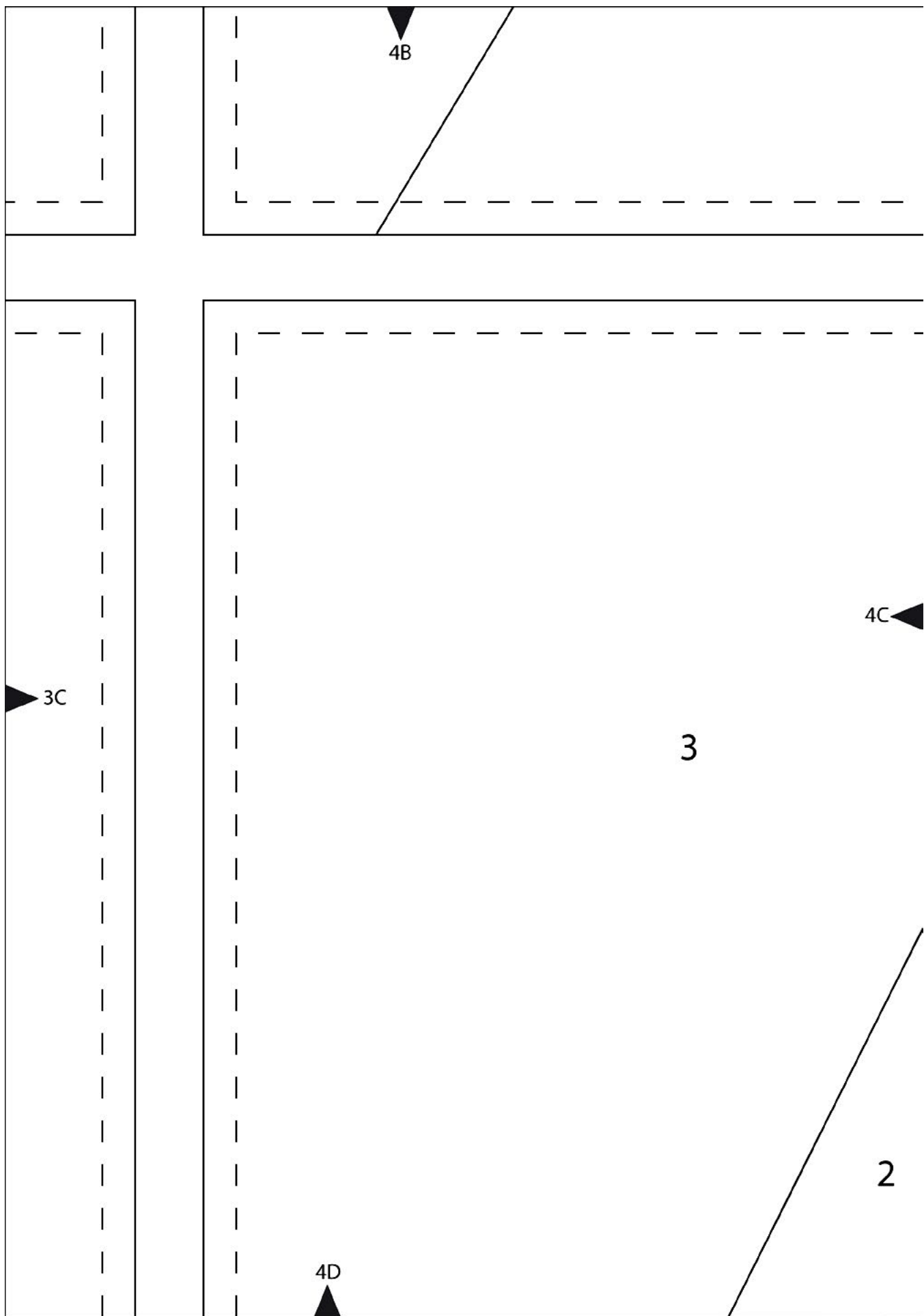


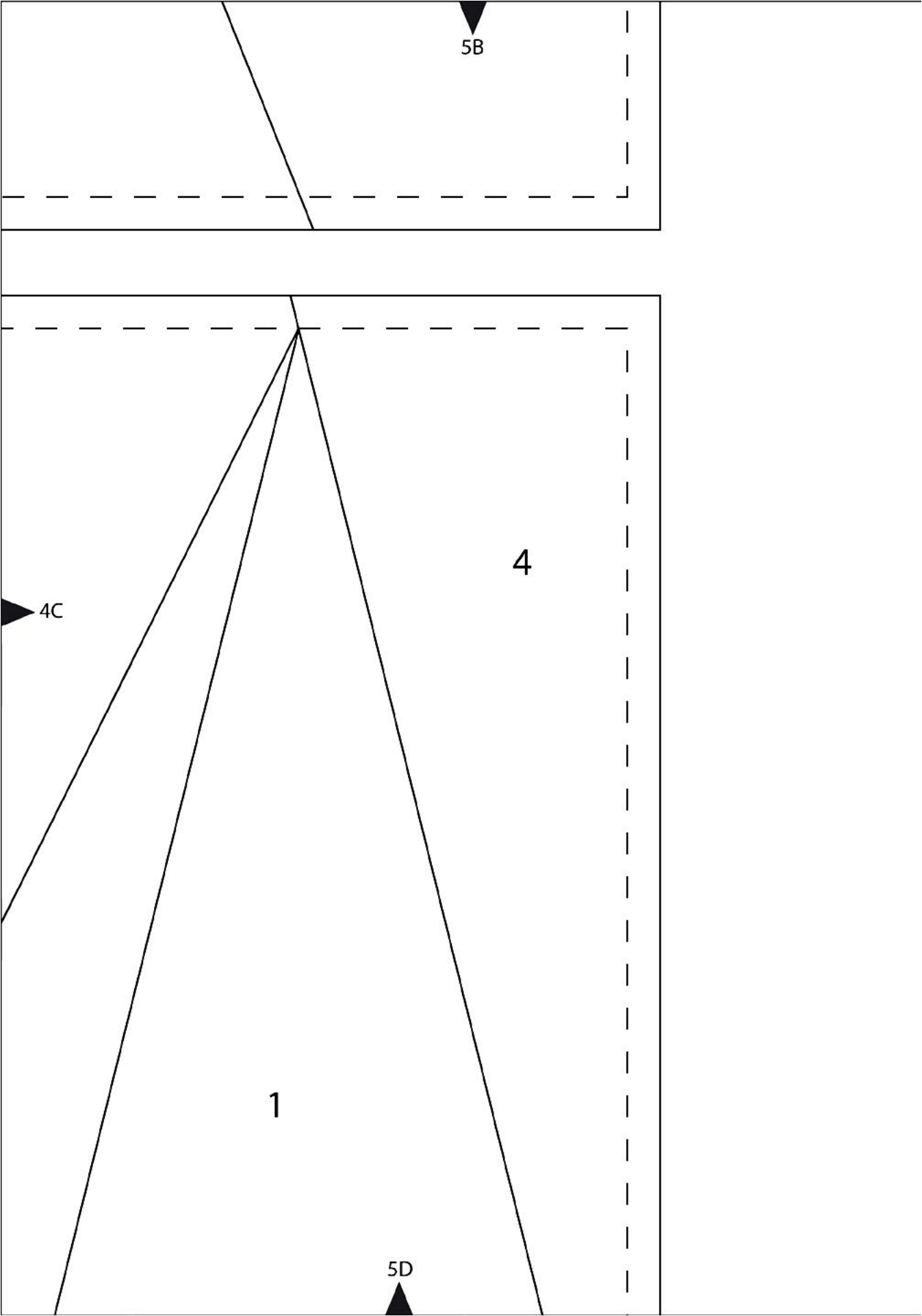




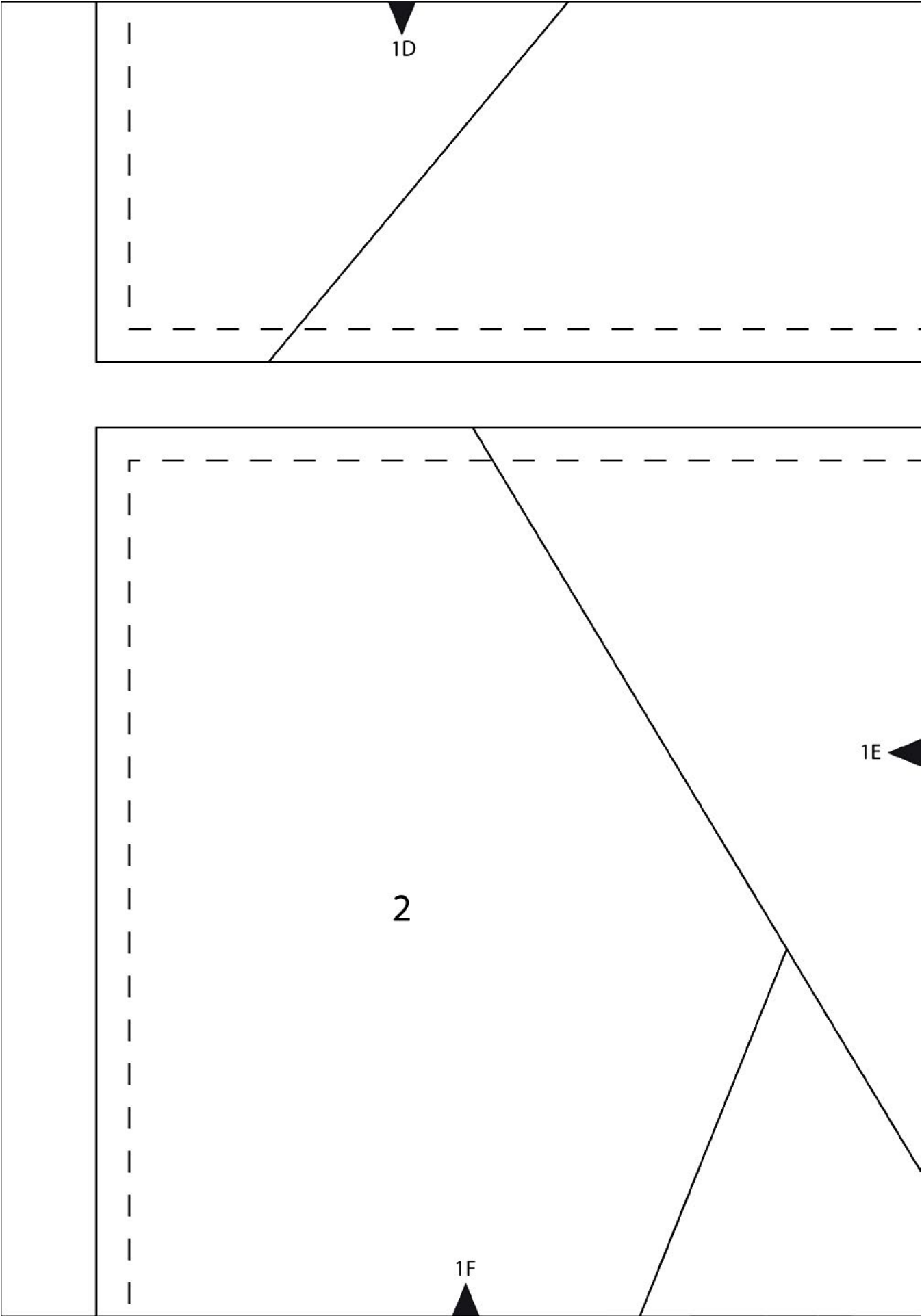


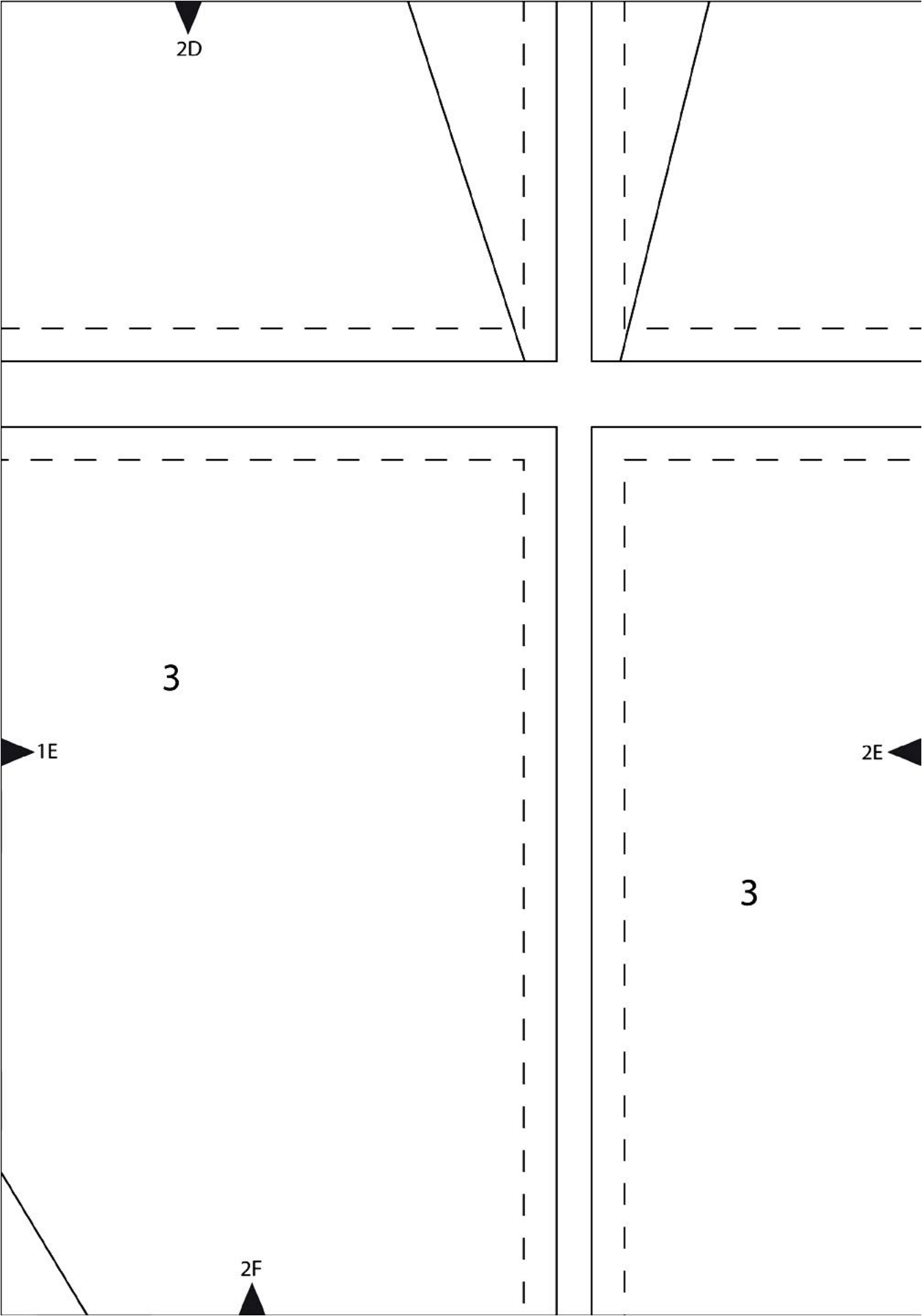


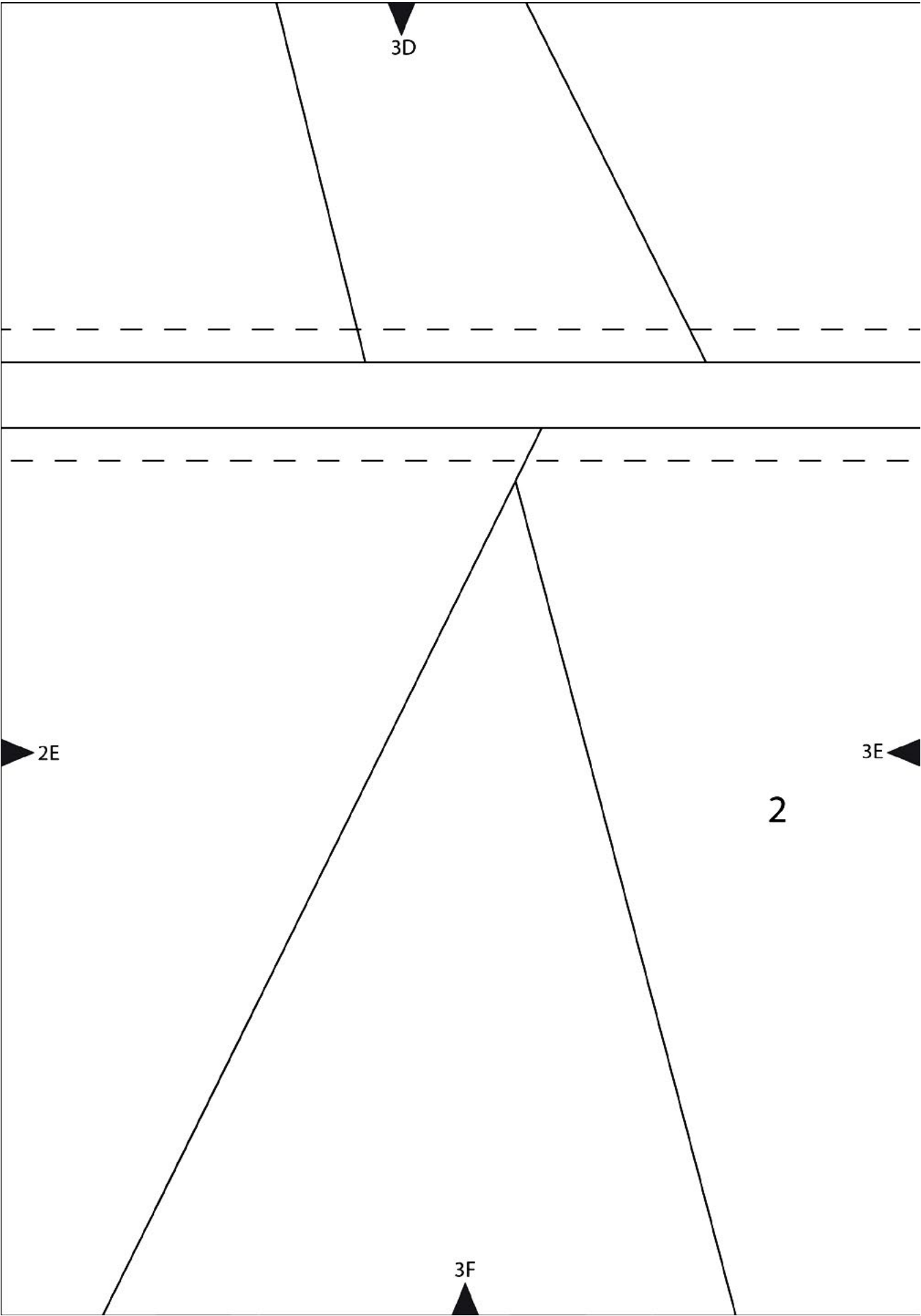


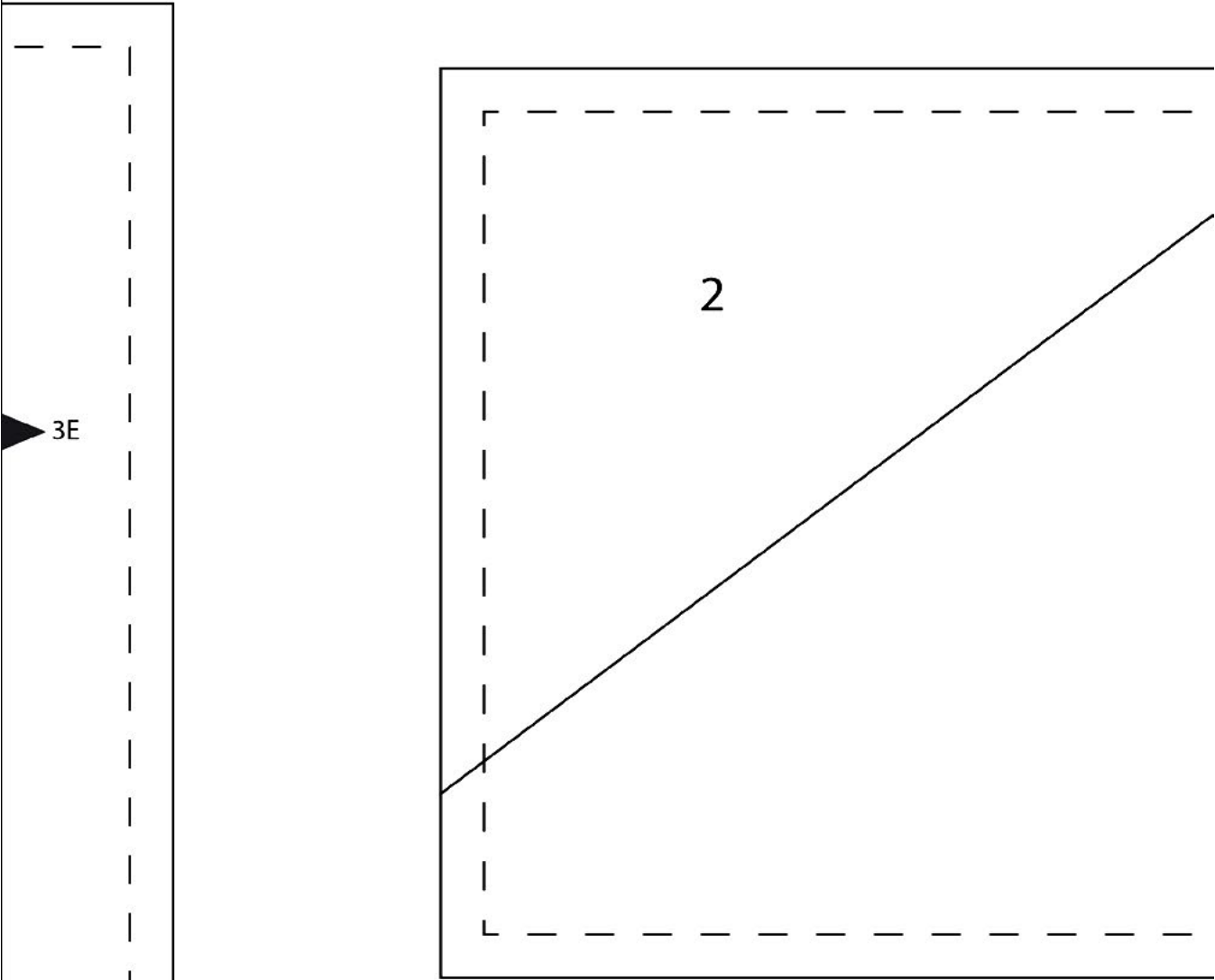
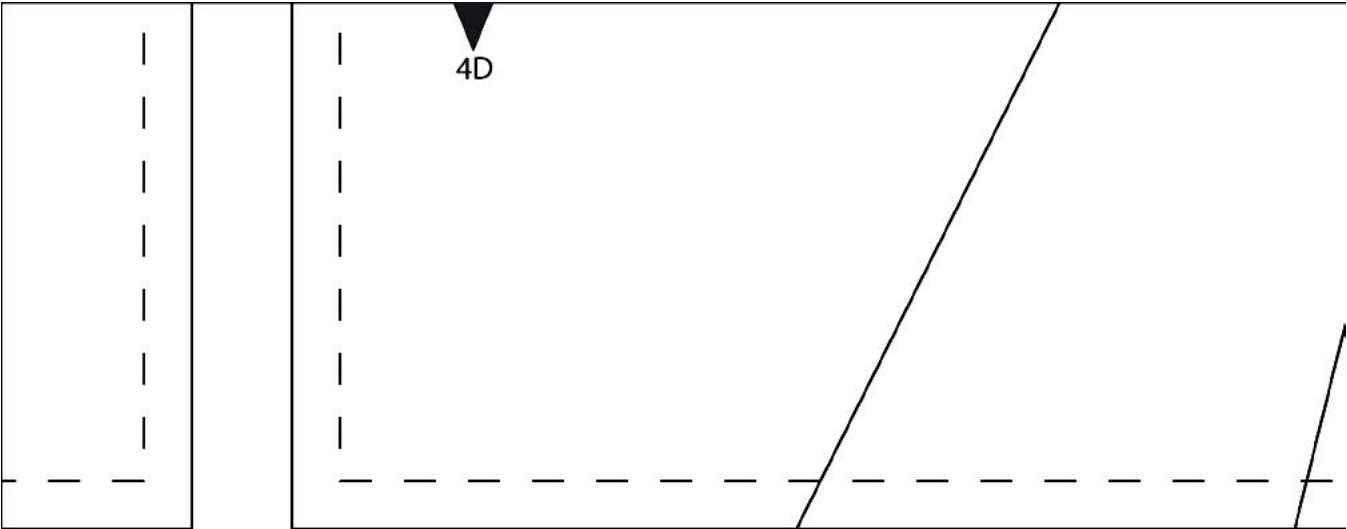


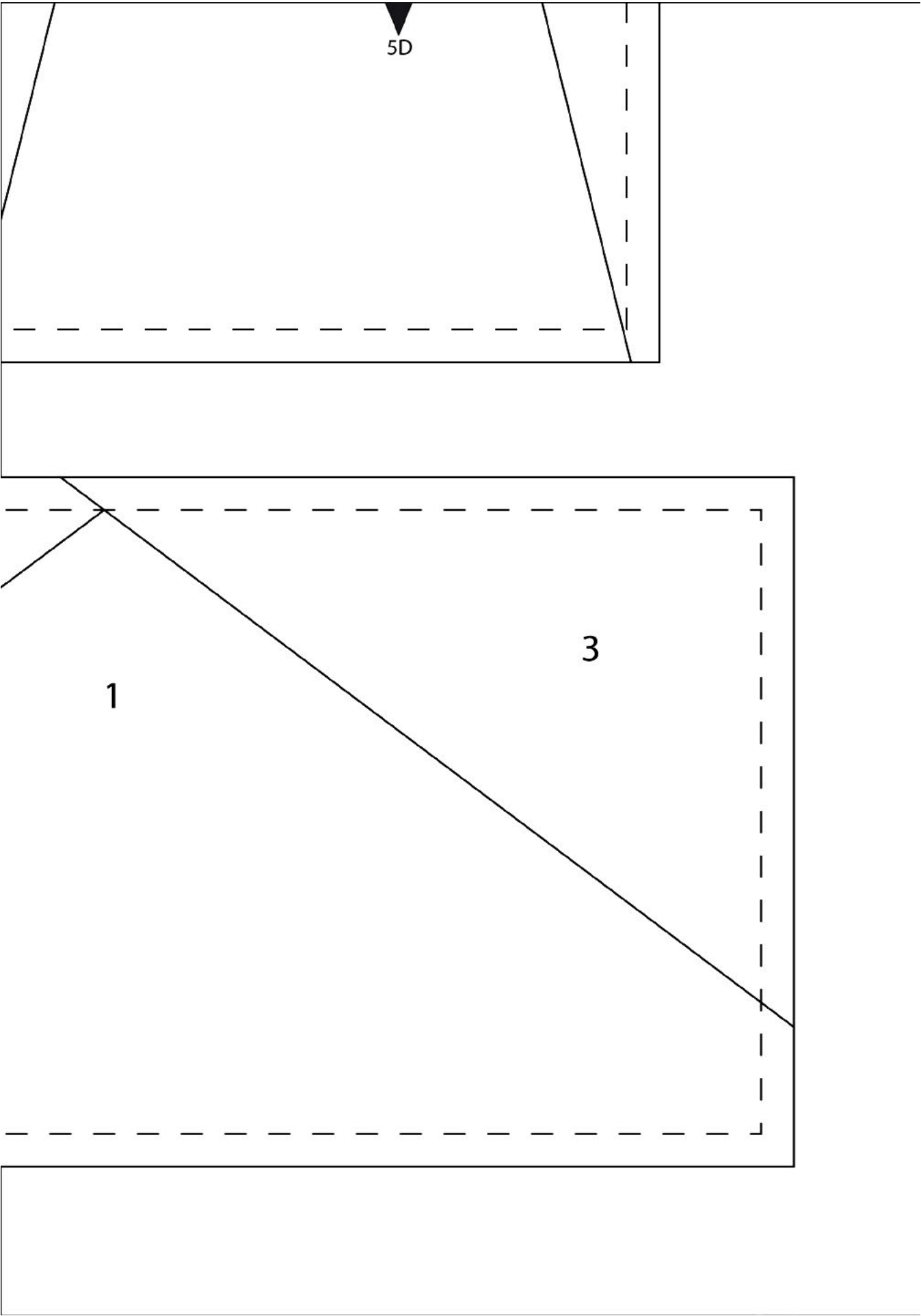


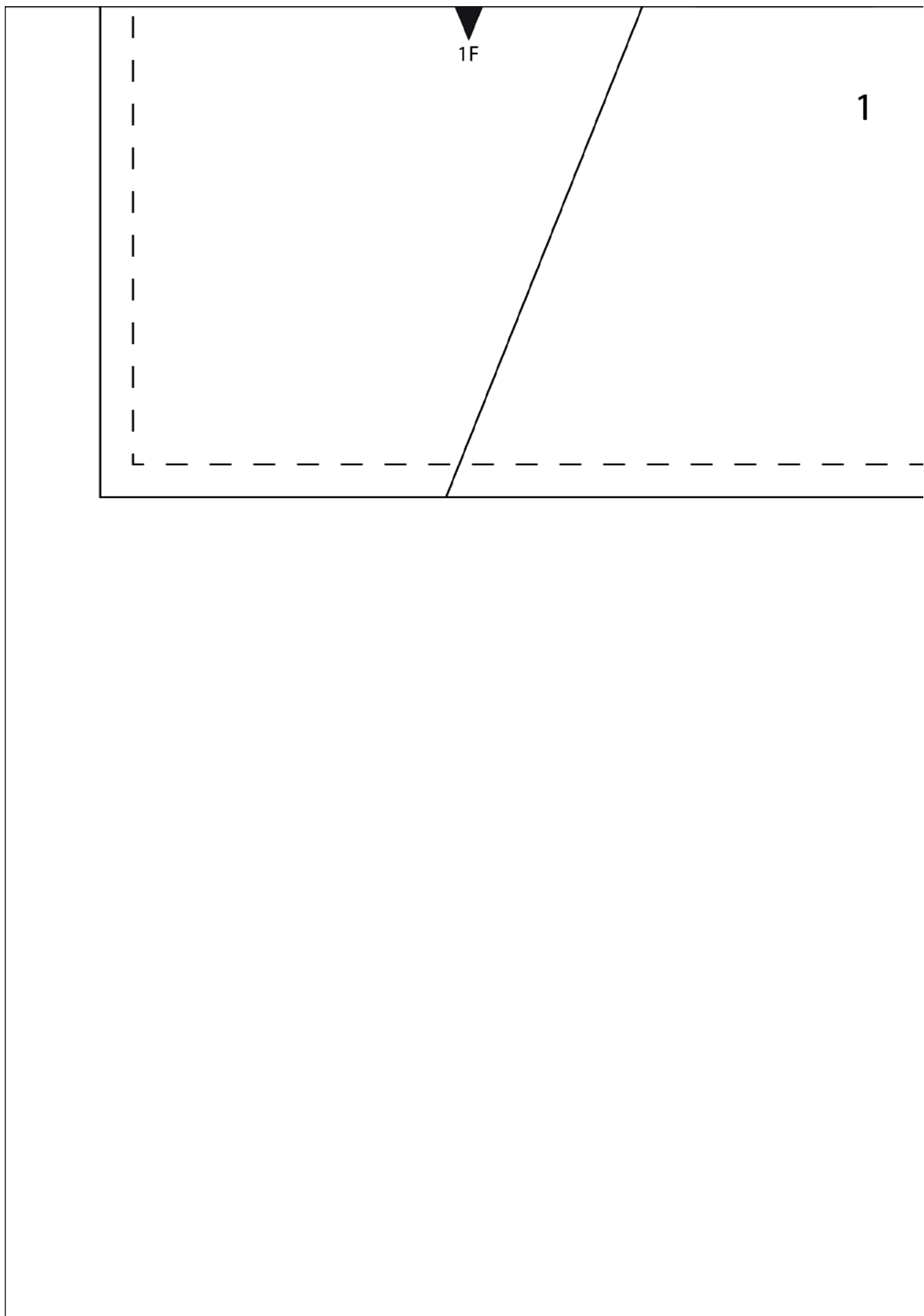




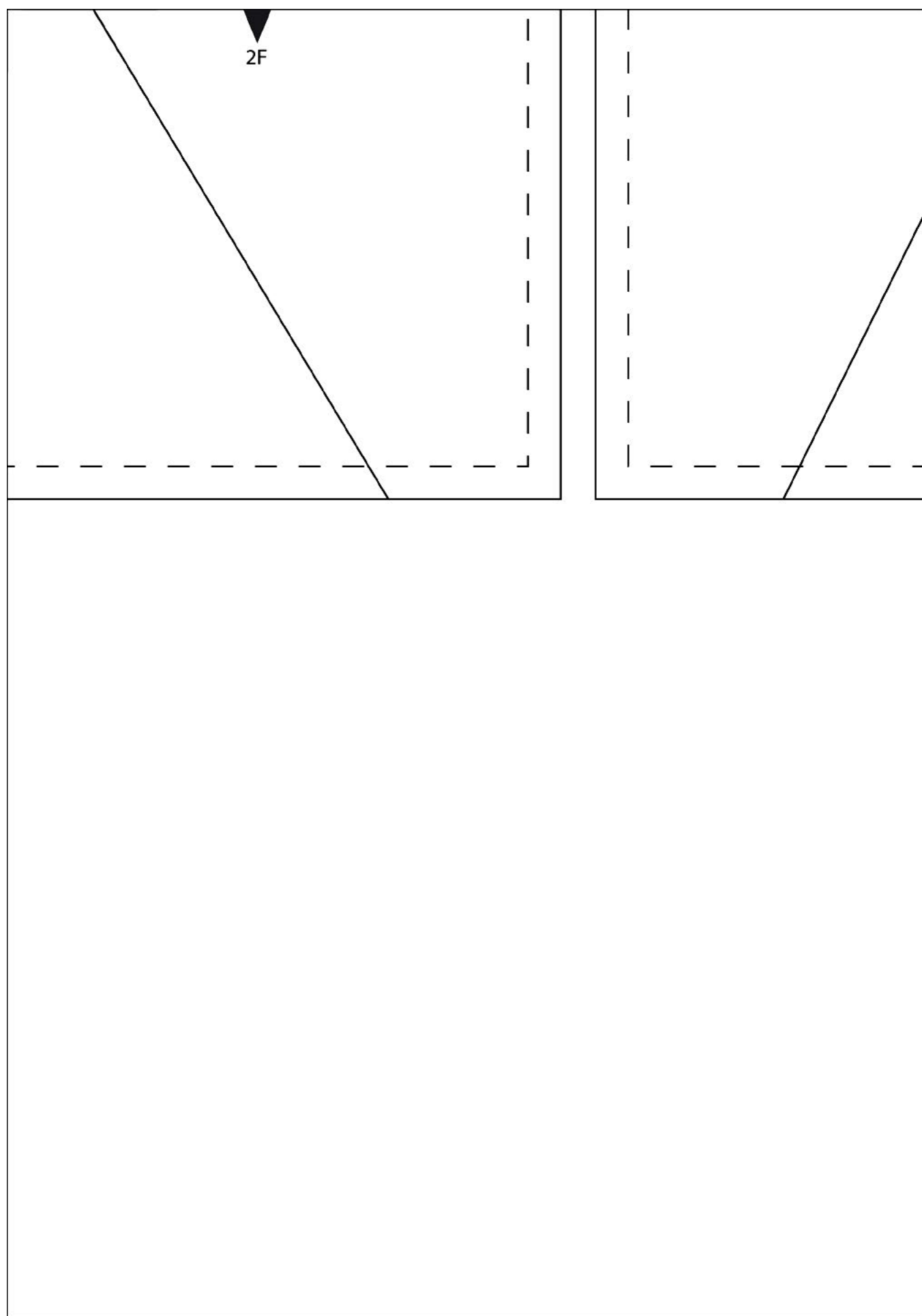


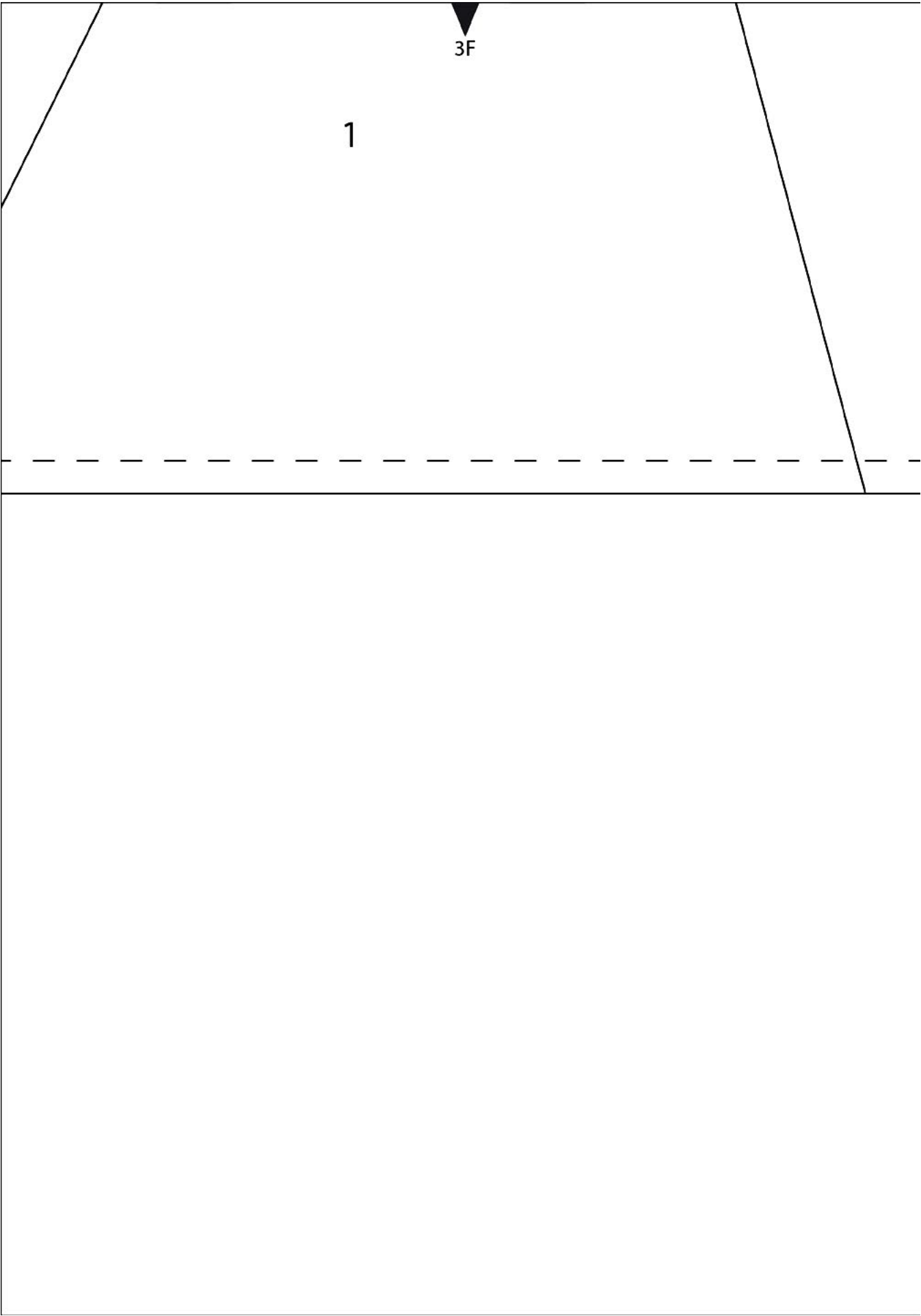












4F