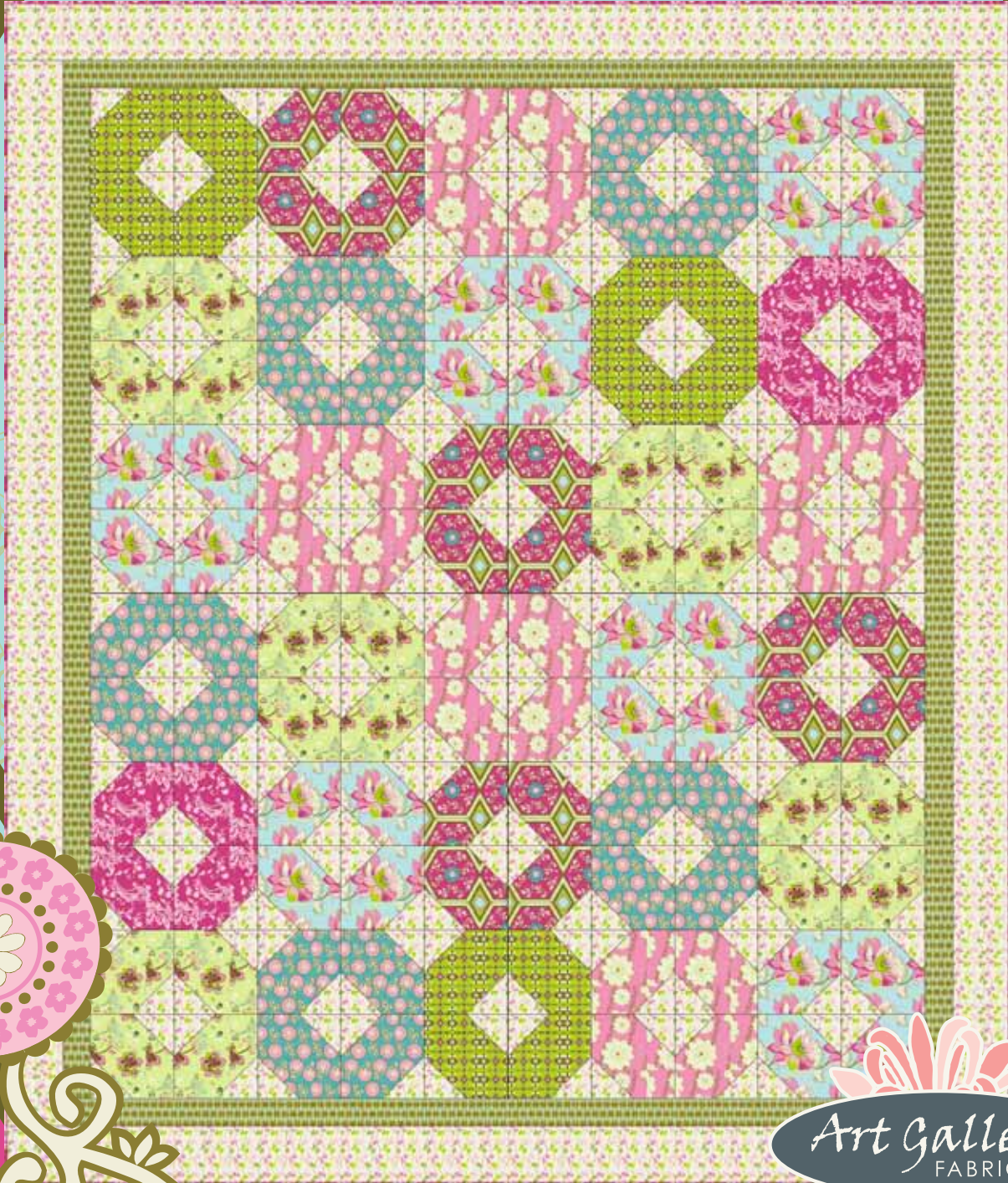


Cotton Candy

{ FEATURING GIRLY GIRL COLLECTION }



FREE PROJECT SHEET
DESIGNED WITH LOVE BY Pat Bravo

Cotton Candy

To download the instructions for this pattern visit

www.artgalleryfabrics.com

Finished Size: 72" by 84"
Block Size: 6" by 6"



COLOR OPTION

Girly Girl

COOL GIRL



GIG-608
Aqua Garden



GIG-607
Berry Reflection



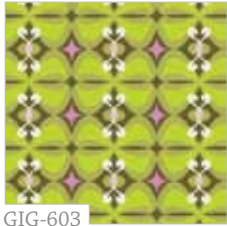
GIG-606
Fresh Bouquet



GIG-605
White Blooming Chain



GIG-604
Bubblegum Lollipops



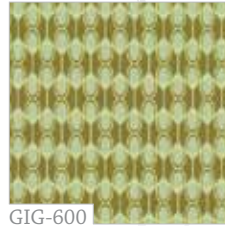
GIG-603
Olive Retro Bows



GIG-602
Berry Whispers



GIG-601
Pink Vines



GIG-600
Moss Dangling Ovals

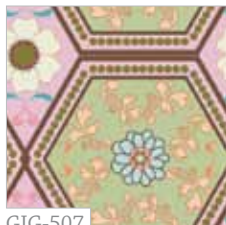
KIT QUANTITY

GIG-600	3/4 yd.	GIG-601	2 1/2 yd.
GIG-602	5/8 yd.	GIG-603	3/8 yd.
GIG-604	3/4 yd.	GIG-605	3/4 yd.
GIG-606	3/4 yd.	GIG-607	5/8 yd.
GIG-608	3/4 yd.	Backing	5 yd.

SWEET GIRL



GIG-508
Golden Garden



GIG-507
Creamy Reflection



GIG-506
Sun-Kissed Bouquet



GIG-505
Rose Blooming Chain



GIG-504
Minty Lollipops



GIG-503
Turquoise Retro Bows



GIG-502
Orange Whispers



GIG-501
Olive Vines



GIG-500
Peony Dangling Ovals

COLOR OPTION KIT QUANTITY

GIG-500	3/4 yd.	GIG-501	2 1/2 yd.
GIG-502	5/8 yd.	GIG-503	3/8 yd.
GIG-504	3/4 yd.	GIG-505	3/4 yd.
GIG-506	3/4 yd.	GIG-507	5/8 yd.
GIG-508	3/4 yd.	Backing	5 yd.



Cotton Candy

Finished Size: 72" by 84"
 Block Size: 6" by 6"

Girly Girl COLLECTION

FABRIC REQUIREMENTS

Fabric A	GIG-603	3/8 yd.
Fabric B	GIG-607	5/8 yd.
Fabric C	GIG-604	3/4 yd.
Fabric D	GIG-606	3/4 yd.
Fabric E	GIG-600	3/4 yd.
Fabric F	GIG-601	2 1/2 yd.
Fabric G	GIG-605	3/4 yd.
Fabric H	GIG-608	3/4 yd.
Fabric I	GIG-602	5/8 yd.

Backing GIG-606 5 1/2 yd.
 (suggested)

Binding fabric included GIG-602
 (FABRIC I)

CUTTING DIRECTIONS

This quilt is made with a variation of a 9-Patch Snowball block (1/4" seam allowances are included).

FOR ALL BLOCKS CUT (120 blocks total)

- Twelve (12) 6 1/2" squares from fabric **A**
- Sixteen (16) 6 1/2" squares from fabric **B**
- Twenty (20) 6 1/2" squares from fabric **C**
- Twenty (20) 6 1/2" squares from fabric **D**
- Twenty (20) 6 1/2" squares from fabric **G**
- Twenty-four (24) 6 1/2" squares from fabric **H**
- Twelve (12) 6 1/2" squares from fabric **I**
- Two hundred and forty (240) 3" squares from fabric **F**

FOR BORDERS CUT

For Inner Border

- Two (2) 64 1/2" by 2 1/2" strips from fabric **E***
- Two (2) 72 1/2" by 2 1/2" strips from fabric **E***

For Outer Border

- Two (2) 72 1/2" by 4 1/2" strips from fabric **H***
- Two (2) 76 1/2" by 4 1/2" strips from fabric **H***

* (in order to get these long strips you need to join two Width Of Fabric strips together)

IMPORTANT HINT FOR FABRIC PLACEMENT:

All the letters shown in color pink represent the pieces or patches but ALSO represent the fabric styles explained in "FABRIC REQUIREMENTS" (notice they are also represented in the same color).

BLOCK CONSTRUCTION

(sew fabrics right sides together)

All 120 blocks are constructed the same way

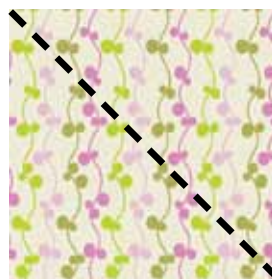


DIAGRAM 1
 Make 2 for each block

- Mark one diagonal line over the **wrong** side of both two (2) fabric **F** 3" squares (**2 squares in total**) with contrasting quilting pencil (**DIAGRAM 1**).



DIAGRAM 2
 Place each square over the four corners of 6 1/2" square (facing right sides together) and stitch over the line on each corner. Be sure that the colors are in opposite directions.



DIAGRAM 3
 Trim "double" fabric corners 1/4" from the stitching line. Open four corners and press.



FINISHED BLOCK
 Make, in the same way, 120 blocks from the various 6 1/2" squares you have cut.

QUILT TOP ASSEMBLY

(sew all seams right sides together)

- Begin sewing the first snowball. Start piecing four blocks with the same main fabrics, two on top and two on bottom (DIAGRAM 4). (Follow the front cover picture for block placement). Press seams open.
- After you finished, start piecing the remaining snowballs in the same way as the first one.
- Piece each row of snowballs.
- After you finish, sew the rows together (right side fabrics facing together). Take much care to match seam intersections between each block (lock them with pins if necessary). Continue joining all the rows. Press all seams toward the same direction.
- Press the WHOLE TOP with a hot steam iron.

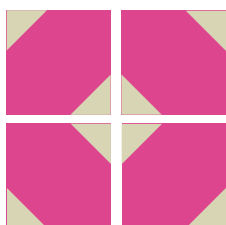


DIAGRAM 4

BORDERS' ASSEMBLY

(sew right sides together)

For the inner border

- Sew two 64½" by 2½" fabric E strips along the opposite sides (left & right) of the top with a ¼" seam allowance. Press open.
- Sew the other two 72½" by 2½" fabric E strips along the top and bottom sides of the top with a ¼" seam allowance. Press open.

For the outer border

- Sew two 72½" by 4½" fabric F strips along the opposite sides (left & right) of the top with a ¼" seam allowance. Press open.
- Sew the other two 76½" by 4½" fabric F strips along the top and bottom sides of the top with a ¼" seam allowance. Press open.
- Layer and quilt as desired.

QUILT ASSEMBLY

(sew right sides together)

- Place BACKING FABRIC on a large surface wrong side up. Stretch it with masking tape against that surface.
- Place BATTING on top of backing fabric.
- Place TOP on top of the batting with right side facing up. Smooth away wrinkles using your hands.
- Pin all layers together and baste with basting thread, using long stitches. You can also use safety pins to join the layers.
- Machine or hand quilt starting at the center

and working towards the corners. Remember that quilting motives are a matter of personal preference. Have fun choosing yours!

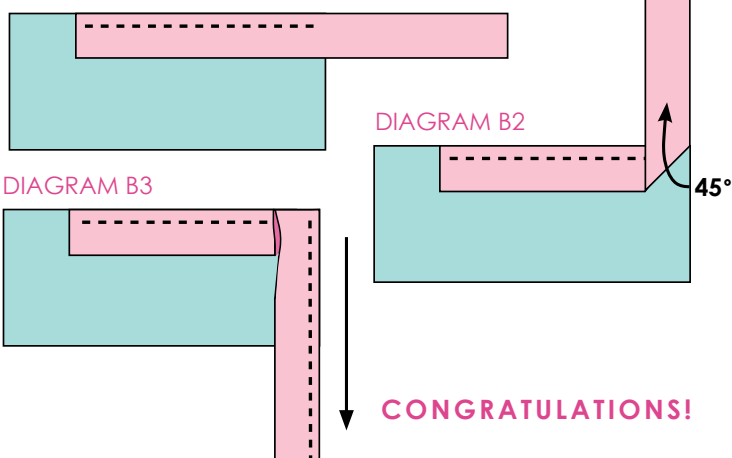
- After you finished, trim excess of any fabric or batting, squaring the quilt to proceed to bind it.

BINDING

(sew right sides together)

- Cut enough strips 1½" wide by the width of the fabric I to make a final strip 322" long. Start sewing the binding strip in the middle of one of the sides of the quilt, placing the strip right side down and leaving an approximated 5" tail. Sew with ¼" seam allowance (using straight stitch), aligning the strip's raw edge with the quilt top's raw edge.
- Stop stitching ¼" before the end of the quilt (DIAGRAM B1). Clip the threads. Remove the quilt from under the machine presser foot. Fold the strip in a motion of 45° and upward, pressing with your fingers (DIAGRAM B2). Hold this fold with your finger, bring the strip down in line with the next edge, making a horizontal fold that aligns with the top edge of the quilt (DIAGRAM B3). Start sewing at ¼" of the border, stitching all the layers. Do the same in the four corners of the quilt.
- Stop stitching before you reach the last 5 or 6 inches. Cut the threads and remove the quilt from under the machine presser foot. Lay the loose ends of the binding flat along the quilt edge, folding the ends back on themselves where they meet. Press them together to form a crease. Using this crease as the stitching line, sew the two open ends of the binding with right sides together (you can help yourself marking with a pencil if the crease is difficult to see).
- Trim seam to ¼" and press open. Complete the sewing. Turn binding to back of the quilt, turn raw edge inside and stitch by hand using blind stitch.

DIAGRAM B1



NOTES: While all possible care has been taken to ensure the accuracy of this pattern, we are not responsible for printing errors or the way in which individual work varies.

Please read instructions carefully before starting the construction of this quilt. If desired, wash and iron your fabrics before starting to cut.