

enchanting

{ FEATURING SPELLBOUND COLLECTION }



Art Gallery
FABRICS

FREE PROJECT SHEET

DESIGNED WITH LOVE BY Pat Bravo

QUILT DESIGNED
WITH LOVE BY *Pat Bravo*

enchanting

To download the instructions for this pattern visit

www.artgalleryfabrics.com

Finished Size: 71" by 83"
Block Size: 6" by 6"



SPeLLBOUND

LOUD SPELL



SP-6608
Blue Wallpaper



SP-6607
Citrine Talisman



SP-6606
Light Graphic Rose



SP-6605
Midnight Bubbles



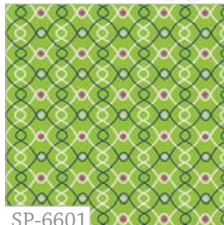
SP-6604
Purple Blooming Trellis



SP-6603
Lavender Plaid



SP-6602
Chalky Silhouettes



SP-6601
Lemongrass Knots



SP-6600
Orchid Glowing Eyes

KIT QUANTITY

SP-5600	1/4 yd.	SP-5601	3/4 yd.
SP-5602	3/8 yd.	SP-5604	3/8 yd.
SP-5605	3/8 yd.	SP-5606	1 yd.
SP-5607	3/8 yd.	SP-5608	3/8 yd.
SP-6601	1 yd.	SP-6602	3/8 yd.
SP-6604	3/8 yd.	SP-6605	5/8 yd.
SP-6606	3/4 yd.	SP-6607	5/8 yd.
SP-6608	3/4 yd.	Backing	5 yd.

QUIET SPELL



SP-5608
Teal Wallpaper



SP-5607
Golden Talisman



SP-5606
Deep Graphic Rose



SP-5605
Ocean Bubbles



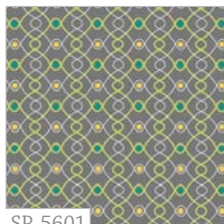
SP-5604
Vert Blooming Trellis



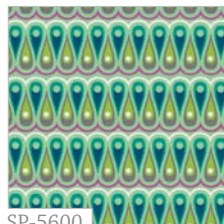
SP-5603
Grassy Plaid



SP-5602
Bright Silhouettes



SP-5601
Iron Knots



SP-5600
Jade Glowing Eyes



Feel the difference



FABRICS DESIGNED BY PATRICIA BRAVO
 QUILT CONSTRUCTED BY PATRICIA BRAVO
 MACHINE QUILTED BY KATHRYN GRAY

enchanting

Finished Size: 71" by 83"
 Block Size: 6" by 6"

SPeLLBOUND COLLECTION

FABRIC REQUIREMENTS

Fabric A	SP-5601	3/4 yd.
Fabric B	SP-6606	3/4 yd.
Fabric C	SP-5608	3/8 yd.
Fabric D	SP-6605	5/8 yd.
Fabric E	SP-5602	3/8 yd.
Fabric F	SP-5605	3/8 yd.
Fabric G	SP-5600	1/4 yd.
Fabric H	SP-5606	1 yd.
Fabric I	SP-5607	3/8 yd.
Fabric J	SP-6604	3/8 yd.
Fabric K	SP-6607	5/8 yd.
Fabric L	SP-5604	3/8 yd.
Fabric M	SP-6608	3/4 yd.
Fabric N	SP-6602	3/8 yd.
Fabric O	SP-6601	1 yd.
Backing		5 yd. (suggested)

Binding fabric included SP-6601

CUTTING DIRECTIONS

This quilt is made with 9-Patch Snowball block

FOR ALL BLOCKS CUT (120 blocks total)

- Nine (9) 6½" squares from fabric **C**
- Fourteen (14) 6½" squares from fabric **D**
- Eleven (11) 6½" squares from fabric **E**
- Nine (9) 6½" squares from fabric **F**
- Three (3) 6½" squares from fabric **G**
- Seven (7) 6½" squares from fabric **I**
- Twelve (12) 6½" squares from fabric **J**
- Seventeen (17) 6½" squares from fabric **K**
- Eleven (11) 6½" squares from fabric **L**
- Nineteen (19) 6½" squares from fabric **M**
- Eight (8) 6½" squares from fabric **N**
- Two hundred and forty (240) 2" squares from fabric **A**
- Two hundred and forty (240) 2" squares from fabric **B**

FOR BORDERS CUT

For Inner Border

- Two (2) 72½" by 2½" strips from fabric **O***
- Two (2) 64½" by 2½" strips from fabric **O***

For Outer Border

- Two (2) 76½" by 3½" strips from fabric **H***
- Two (2) 70½" by 3½" strips from fabric **H***

* (in order to get these long strips you need to join two Width Of Fabric strips together)

IMPORTANT HINT FOR FABRIC PLACEMENT:

All the letters shown in color pink represent the pieces or patches but ALSO represent the fabric styles explained in "FABRIC REQUIREMENTS" (notice they are also represented in the same color).

BLOCK CONSTRUCTION

(sew fabrics right sides together)

All 120 blocks are constructed the same way

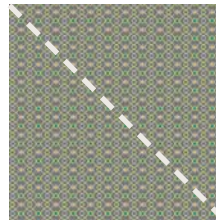


DIAGRAM 1
 Make 4, two lights and two darks for each block

- Mark one diagonal line over the **wrong** side of both two fabric **A** and two fabric **B** 2" squares (**4 squares in total**) with contrasting quilting pencil (**DIAGRAM 1**).



DIAGRAM 2

Place each square over the four corners of 6½" square (facing right sides together) and stitch over the line on each corner. Be sure that the colors are in opposite directions.



DIAGRAM 3

Trim fabric corners ¼" from the stitching line. Open four corners and press.



FINISHED BLOCK

Make, in the same way, 120 blocks from the various 6½" squares you have cut.

QUILT TOP ASSEMBLY

(sew all seams right sides together)

- Begin sewing the first row. Start piecing the blocks consecutively, matching raw edges. (DIAGRAM 4) (Follow the front cover picture for block placement). Press seams open.
- After you finished, start piecing the second row in the same way as the first one.
- Don't piece the rows together yet. Wait until you have completed all the rows.
- After you finish, sew the rows together (right side fabrics facing together). Take much care to match seam intersections between each block (lock them with pins if necessary). Continue joining all the rows. Press all seams toward the same direction.
- Press the WHOLE TOP with a hot steam iron.

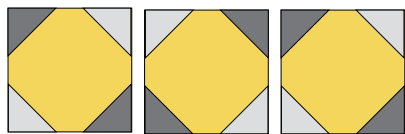


DIAGRAM 4

BORDERS' ASSEMBLY

(sew right sides together)

For the inner border

- Sew two 72 1/2" by 2 1/2" fabric O strips along the opposite sides (left & right) of the top with a 1/4" seam allowance. Press open.
- Sew the other two 64 1/2" by 2 1/2" fabric O strips along the top and bottom sides of the top with a 1/4" seam allowance. Press open.

For the outer border

- Sew two 76 1/2" by 3 1/2" fabric H strips along the opposite sides (left & right) of the top with a 1/4" seam allowance. Press open.
- Sew the other two 70 1/2" by 3 1/2" fabric H strips along the top and bottom sides of the top with a 1/4" seam allowance. Press open.

QUILT ASSEMBLY

(sew right sides together)

- Place BACKING FABRIC on a large surface **wrong** side up. Stretch it with masking tape against that surface.
- Place BATTING on top of backing fabric.
- Place TOP on top of the batting with **right** side facing up. Smooth away wrinkles using your hands.
- Pin all layers together and baste with basting thread, using long stitches. You can also use safety pins to join the layers.
- Machine or hand quilt starting at the center and working towards the corners. Remember that quilting motives are a matter of personal preference. Have fun choosing yours!
- After you finished, trim excess of any fabric or batting, squaring the quilt to proceed to bind it.

BINDING

(sew right sides together)

- Cut enough strips 1 1/2" wide by the width of the fabric O to make a final strip 318" long. Start sewing the binding strip in the middle of one of the sides of the quilt, placing the strip right side down and leaving an approximated 5" tail. Sew with 1/4" seam allowance (using straight stitch), aligning the strip's raw edge with the quilt top's raw edge.
- Stop stitching 1/4" before the end of the quilt (DIAGRAM B1). Clip the threads. Remove the quilt from under the machine presser foot. Fold the strip in a motion of 45° and upward, pressing with your fingers (DIAGRAM B2). Hold this fold with your finger, bring the strip down in line with the next edge, making a horizontal fold that aligns with the top edge of the quilt (DIAGRAM B3). Start sewing at 1/4" of the border, stitching all the layers. Do the same in the four corners of the quilt.
- Stop stitching before you reach the last 5 or 6 inches. Cut the threads and remove the quilt from under the machine presser foot. Lay the loose ends of the binding flat along the quilt edge, folding the ends back on themselves where they meet. Press them together to form a crease. Using this crease as the stitching line, sew the two open ends of the binding with right sides together (you can help yourself marking with a pencil if the crease is difficult to see).
- Trim seam to 1/4" and press open. Complete the sewing. Turn binding to back of the quilt, turn raw edge inside and stitch by hand using blind stitch.

DIAGRAM B1

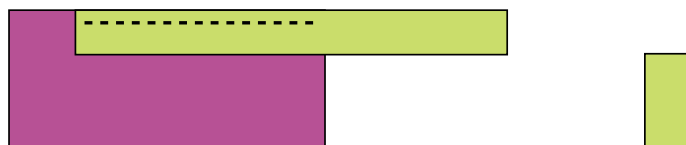


DIAGRAM B2

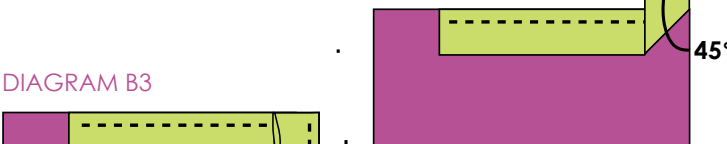
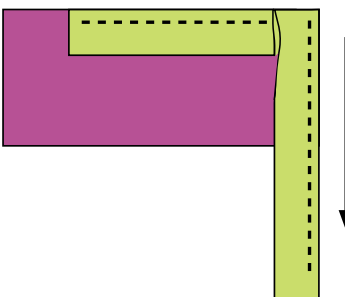


DIAGRAM B3



CONGRATULATIONS!

NOTES: While all possible care has been taken to ensure the accuracy of this pattern, we are not responsible for printing errors or the way in which individual work varies. Please read instructions carefully before starting the construction of this quilt. If desired, wash and iron your fabrics before starting to cut.