

Flirty

{ FEATURING COQUETTE COLLECTION }



Art Gallery  
FABRICS

FREE PROJECT SHEET

DESIGNED WITH LOVE BY Pat Bravo

QUILT DESIGNED  
WITH LOVE BY *Pat Bravo*

# Flirty

FINISHED SIZE: 78" x 94"  
BLOCK SIZE: 14" x 18"  
SASHING: 2"

To download the instructions for this pattern visit

[www.artgalleryfabrics.com](http://www.artgalleryfabrics.com)

## KIT QUANTITY

CO-8201	5/8 yd.	CO-8206	2 yd.
CO-9200	1 yd.	CO-9201	5/8 yd.
CO-8205	1 3/8 yd.	CO-9204	3/4 yd.
CO-9202	1/8 yd.	CO-8204	1/4 yd.
CO-8202	1/8 yd.	NE-104	2 1/4 yd.
CO-8200	1 yd.	Backing	5 3/4 yd.

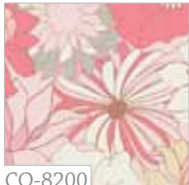
## ADDITIONAL BLENDER USED



NE-104 Natural

# Coquette

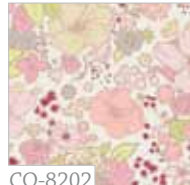
POWDER ROOM



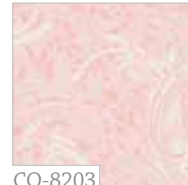
CO-8200  
Flower Bed Pale



CO-8201  
Feminine Flair Pear



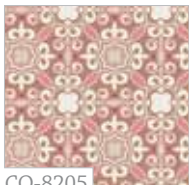
CO-8202  
Fashion Scent Peach



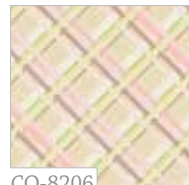
CO-8203  
Flirt Power Pink



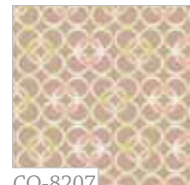
CO-8204  
Vintage Rush Coral



CO-8205  
Romantic Wall Beige



CO-8206  
Plaid Passion Beige



CO-8207  
Mod Rings Terra



CO-8209  
Innocent Charm White

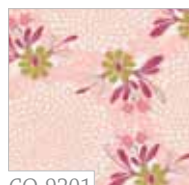


CO-8210  
Innocent Charm Silver

JEWELRY BOX



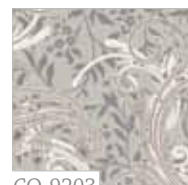
CO-9200  
Flower Bed Blush



CO-9201  
Feminine Flair Petal



CO-9202  
Fashion Scent Purple



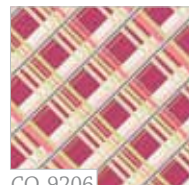
CO-9203  
Flirt Power Gray



CO-9204  
Vintage Rush Brown



CO-9205  
Romantic Wall Lime



CO-9206  
Plaid Passion Cherry



CO-9207  
Mod Rings Green



CO-9208  
Mod Rings Slate



CO-9209  
Innocent Charm Rose



QUILT DESIGNED WITH LOVE  
BY PAT BRAVO

# Flirty

Featuring **COQUETTE** COLLECTION

Finished Size: 78" x 94"  
BLOCK SIZE: 14" x 18"  
SASHING: 2"

## FABRIC REQUIREMENTS

Fabric <b>A</b> NE-104	2 ¼ yd.	
Fabric <b>B</b> CO-8200	1 yd.	
Fabric <b>C</b> CO-8201	5/8 yd.	
Fabric <b>D</b> CO-8206	2 yd.	
Fabric <b>E</b> CO-8204	¼ yd.	
Fabric <b>F</b> CO-8202	1/8 yd.	
Fabric <b>G</b> CO-9200	1 yd.	
Fabric <b>H</b> CO-9201	5/8 yd.	
Fabric <b>I</b> CO-9204	3/4 yd.	
Fabric <b>J</b> CO-9202	1/8 yd.	
Fabric <b>K</b> CO-8205	1 3/8 yd.	
		<b>Backing Fabric</b>
		CO-8203 5 3/4 yd. (suggested)
		<b>Binding Fabric</b>
		NE-104 (Fabric <b>A</b> ) (included)

Double Sided Fusible Web 1 yd.  
ULTRA LIGHT WEIGHT (44"-45" WIDE)

## ✿ CUTTING DIRECTIONS

(¼" seam allowances are included)

### FOR ALL BLOCKS CUT (16 blocks total)

Cut 64 (sixty four) fabric **A** 4¼" x 5½" rectangles.

- Stack up half of them (32) and place one on top of another, RIGHT sides UP. Grab the other half, and stack them up, WRONG sides UP. Make sure you keep them that way!
- Align them, and cut both stacks in half diagonally, from bottom left to top right. You will get a total of 128 triangles that might look the same but they are not, 64 are the "mirror image" of the other 64 and you will use them depending on their location within the block. More details later.

Cut 16 (sixteen) fabric **B** 4¼" x 5½" rectangles.

- Stack up half of them (32) and place one on top of another, RIGHT sides UP. Grab the other half, and stack them up, WRONG sides UP.
- Align them, and cut both stacks in half diagonally, from bottom left to top right. You will get a total of 32 triangles.

FABRICS DESIGNED BY PAT BRAVO  
QUILT CONSTRUCTED BY ANDREA AKEN  
FOR **ART GALLERY FABRICS**



Cut 32 (thirty two) fabric **B** 2¼" x 5" rectangles

Cut 32 (thirty two) fabric **B** 2¾" x 4" rectangles

Cut 32 (thirty two) fabric **C** 4" x 5" rectangles

Cut 32 (thirty two) fabric **D** 4¼" x 5½" rectangles

- Stack up half of them (16) and place one on top of another, RIGHT sides UP. Grab the other half, and stack them up, WRONG sides UP.
- Align them, and cut both stacks in half diagonally, from bottom left to top right. You will get a total of 64 triangles.

Cut 16 (sixteen) fabric **G** 4¼" x 5½" rectangles.

- Stack up half of them (32) and place one on top of another, RIGHT sides UP. Grab the other half, and stack them up, WRONG sides UP.
- Align them, and cut both stacks in half diagonally, from bottom left to top right. You will get a total of 32 triangles.

Cut 32 (thirty two) fabric **G** 2¼" x 5" rectangles

Cut 32 (thirty two) fabric **G** 2¾" x 4" rectangles

Cut 32 (thirty two) fabric **H** 4" x 5" rectangles

### FOR SASHING CUT

For horizontal rows

Cut 12 (twelve) strips of 2½" x 14½" of fabric **K**

For vertical rows

Cut 12 (twelve) strips of 2½" x 18½" of fabric **K**

For the cornerstones

Cut 9 (nine) 2½" x 2½" squares of fabric **D**

### FOR BORDERS CUT

Inner Border

Two 1½" x 62½" strips from fabric **I**\*

Two 1½" x 80½" strips from fabric **I**\*

Middle Border

Two 3½" x 64½" strips from fabric **A**\*

Two 3½" x 86½" strips from fabric **A**\*

Outer Border

Two 4½" x 70½" strips from fabric **D**\*

Two 4½" x 94½" strips from fabric **D**\*

\* In order to get these long strips you need to join two or more Width Of Fabric strips together.

## ★ BLOCK CONSTRUCTION

(Sew all rights sides together with  $\frac{1}{4}$ " seam allowance. Press open.)

### Block Combination 1:

- Piece one fabric **A** triangle to one fabric **B** triangle. (DIAGRAM 1)

Make sure the triangles look like this (the seam line should go up diagonally, from left to right)

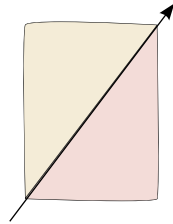


DIAGRAM 1

### NOTE:

When joining two triangles make sure you shift one of the triangles upwards, just about an  $\frac{1}{8}$ ", so that when you sew, you can start from the edge. After you join them together, trim the dog ears.

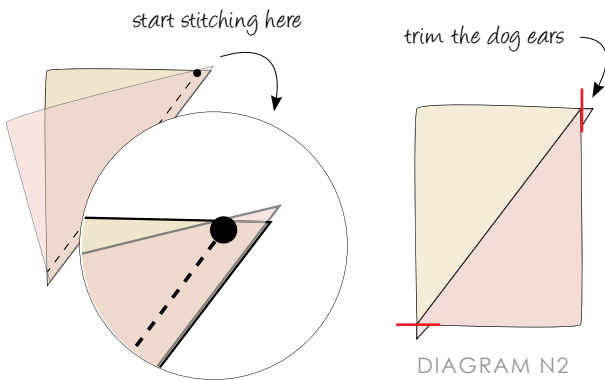


DIAGRAM N1

DIAGRAM N2

- Sew one fabric **B** ( $2\frac{1}{4}$ "  $\times$  5") rectangle on the right side (fabric **B** side), matching the 5" side. (DIAGRAM 2)

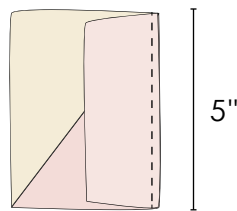


DIAGRAM 2

- Sew a fabric **C** (4"  $\times$  5") rectangle, matching the 5" side. (DIAGRAM 3)

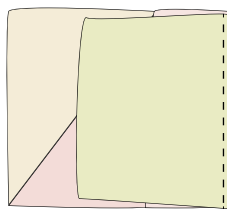


DIAGRAM 3

- Sew another fabric **B** ( $2\frac{1}{4}$ "  $\times$  5") rectangle on the 5" side. Set unit aside. (DIAGRAM 4)

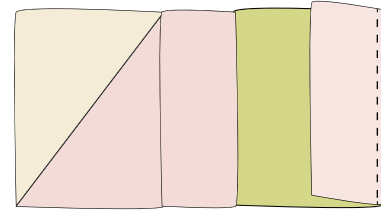


DIAGRAM 4

- Following the diagram, join another pair of fabric **A** & **B** triangles taking into consideration that the fabric **A** triangle should be on the corner.

This time choose the "mirror" triangles, the seam line should go down diagonally, from left to right.

- Sew this piece to the unit previously constructed, matching fabric **B** rectangle to fabric **B** triangle on the 5" sides. Set unit aside. (DIAGRAM 5)

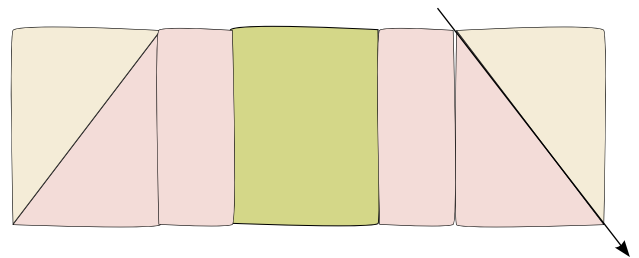


DIAGRAM 5

- Make in the same way another unit. We will refer to these units as **units "a"**. Set both units aside.

- Piece together one fabric **B** ( $2\frac{3}{4}$ "  $\times$  4") rectangle and one **C** (4"  $\times$  5") rectangle, joining them together on the 4" side.

- Now, sew another fabric **B** ( $2\frac{3}{4}$ "  $\times$  4") rectangle on the 4" remaining side of the fabric **C** rectangle. Set unit aside.

- Make in the same way, another unit like this, we will refer to this units as **units "b"**. Set them aside. (DIAGRAM 6)

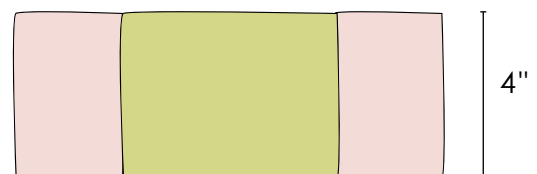


DIAGRAM 6

- Grab four fabric **A** triangles and four fabric **D** triangles. Begin making pairs, matching one fabric **A** triangle with one fabric **D**, follow the diagram for placement. (DIAGRAM 7)

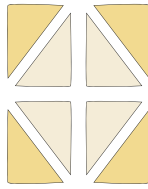


DIAGRAM 7

- Join together each pair of triangles. (DIAGRAMS N1 & N2)
- Sew two of these units together, matching the fabric **A** triangles on the 5" side. (DIAGRAM 8) Do the same with the remaining two. (DIAGRAM 9)

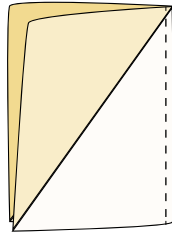


DIAGRAM 8

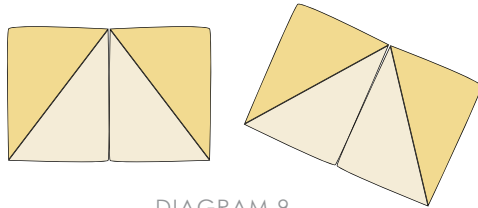


DIAGRAM 9

- Join both sub-units together, matching the fabric **A** sides. This is the "**center**" unit. (DIAGRAM 10)

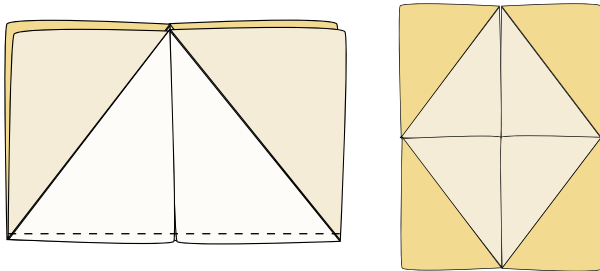


DIAGRAM 10

- Sew the "**b**" units on each of the long sides of the center unit. (DIAGRAM 11)

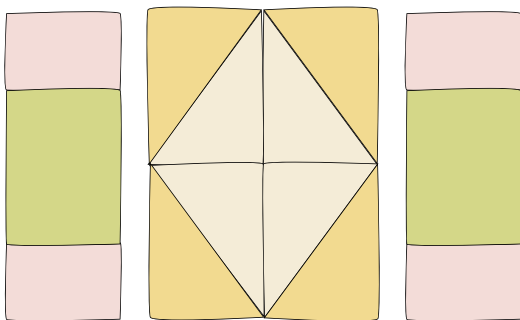


DIAGRAM 11

- Sew units "**a**" on the top and bottom. Making sure the fabric **A** triangles are on the corners. (DIAGRAM 12)
- This is the finished Block Combination 1, make like this 7 more blocks.

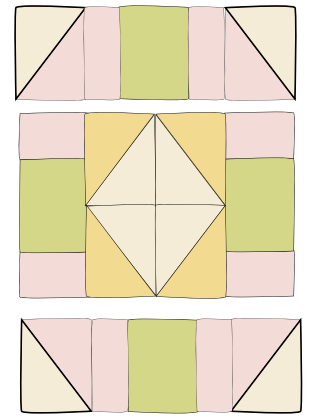


DIAGRAM 12

### Block Combination 2:

This block is constructed the same way combination 1 is constructed, just with a different fabric combination. Follow the same instructions referring to the following fabric placements.

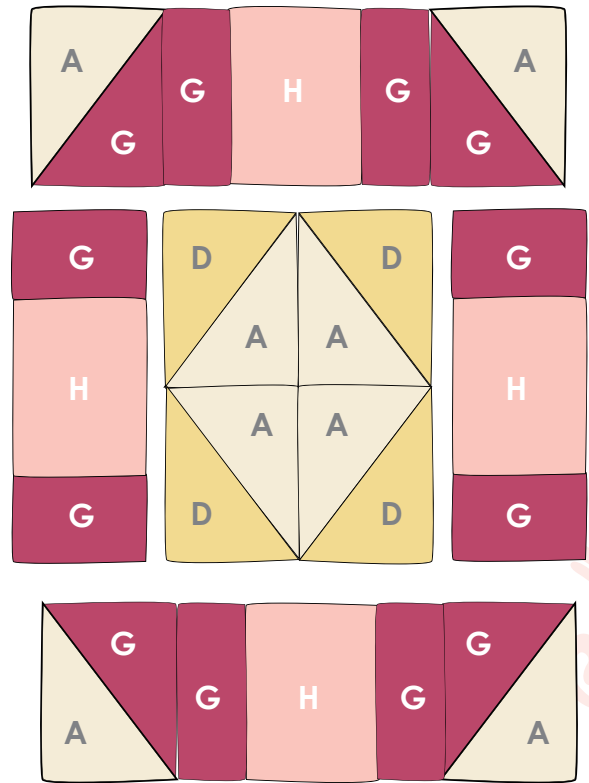
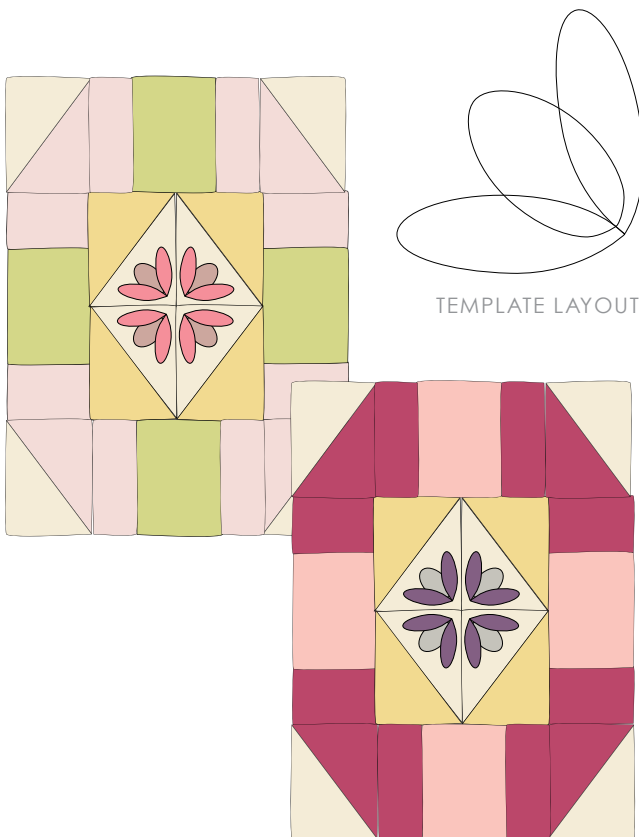


DIAGRAM 13

## ☆ APPLIQUÉ TULIPS

(Sew all rights sides together with 1/4" seam allowance. Press open.) Templates are located on the last page.

- Using fusible web, trace all pieces of the tulips on the paper side of the fusible web. (If you are machine appliqueing, cut out each piece with scissors on the line. If you are using needle turn applique, leave a 1/4" around each piece).  
You will need 8 (eight) **long petals** for each block. Trace each one 128 times.  
You will need 4 (four) **short petals** for each block. Trace each one 64 times.
- For each **block combination 1**:  
Lay 64 **long petals** on the wrong side of fabric **E**. Cut these pieces out of the fabric.  
Lay 32 **short petals** on the wrong side of fabric **F**. Cut these pieces out of the fabric.
- For each **block combination 2**:  
Lay 64 **long petals** on the wrong side of fabric **I**. Cut these pieces out of the fabric.  
Lay 32 **short petals** on the wrong side of fabric **J**. Cut these pieces out of the fabric.
- Peel the paper off the fusible web and place each piece on the center of its corresponding block.
- When you have the petals placed the way you like them, use the iron to tack them down.
- Stitch around all petals on all 16 blocks.



## ☆ ASSEMBLING THE TOP

(Sew all rights sides together with 1/4" seam allowance. Press open.)

- Begin sewing the first row. Alternate blocks between **block combination 1 & block combination 2**.
- Sew one sashing strip (2 1/2" x 18 1/2") between each block. Follow the front cover picture for block and sashing placement.  
(DIAGRAM 14)
- Make a sashing row alternating four fabric **K** (2 1/2" x 14 1/2") strips and three fabric **D** squares sewn on the short side. Follow the front cover picture.
- Sew the second row, this time starting with block combination 2. Alternating blocks and sewing one sashing strip (2 1/2" x 18 1/2") between each block.
- Keep constructing the rows and alternate them with the sashing rows. Follow the front cover picture for block and sashing placement.



## ☆ BORDERS ASSEMBLY

(Sew all rights sides together with 1/4" seam allowance. Press open.)

### For the inner border

- Sew two 80 1/2" x 1 1/2" fabric **I** strips along the left & right sides of the quilt top.
- Sew the other two 62 1/2" x 1 1/2" fabric **I** strips along the top and bottom sides of the quilt top.

### For the middle border

- Sew two 86 1/2" x 3 1/2" fabric **A** strips along the left & right sides of the quilt top.
- Sew the other two 64 1/2" by 3 1/2" fabric **A** strips along the top and bottom sides of the quilt top.

### For the outer border

- Sew two 94 1/2" x 4 1/2" fabric **D** strips along the left & right sides of the quilt top.
- Sew the other two 70 1/2" x 4 1/2" fabric **D** strips along the top and bottom sides of the quilt top.

## ☆ QUILT ASSEMBLY

(sew right sides together)

- Place BACKING FABRIC on a large surface wrong side up. Stretch it with masking tape against that surface.
- Place BATTING on top of backing fabric.
- Place TOP on top of the batting with right side facing up. Smooth away wrinkles using your hands.
- Pin all layers together and baste with basting thread, using long stitches. You can also use safety pins to join the layers.
- Machine or hand quilt starting at the center and working towards the corners. Remember that quilting motives are a matter of personal preference. Have fun choosing yours!
- After you finished, trim excess of any fabric or batting, squaring the quilt to proceed to bind it.

## ☆ BINDING

(sew right sides together)

- Cut enough strips  $1\frac{1}{2}$ " wide by the width of the fabric **A** to make a final strip 354" long. Start sewing the binding strip in the middle of one of the sides of the quilt, placing the strip right side down and leaving an approximated 5" tail. Sew with  $\frac{1}{4}$ " seam allowance (using straight stitch), aligning the strip's raw edge with the quilt top's raw edge.
- Stop stitching  $\frac{1}{4}$ " before the edge of the quilt (DIAGRAM B 1). Clip the threads. Remove the quilt from under the machine presser foot. Fold the strip in a motion of  $45^\circ$  and upward, pressing with your fingers (DIAGRAM B2). Hold this fold with your finger, bring the strip down in line with the next edge, making a horizontal fold that aligns with the top edge of the quilt (DIAGRAM B3). Start sewing at  $\frac{1}{4}$ " of the border, stitching all the layers. Do the same in the four corners of the quilt.
- Stop stitching before you reach the last 5 or 6 inches. Cut the threads and remove the quilt from under the machine presser foot. Lay the loose ends of the binding flat along the quilt edge, folding the ends back on themselves where they meet. Press them together to form a crease. Using this crease as the stitching line, sew the two open ends of the binding with right sides together (you can help yourself marking with a pencil if the crease is difficult to see).
- Trim seam to  $\frac{1}{4}$ " and press open. Complete the sewing. Turn binding to back of the quilt, turn raw edge inside and stitch by hand using blind stitch.



To see more patterns, fabrics  
and lots of inspiration visit:

[patbravo.com](http://patbravo.com)



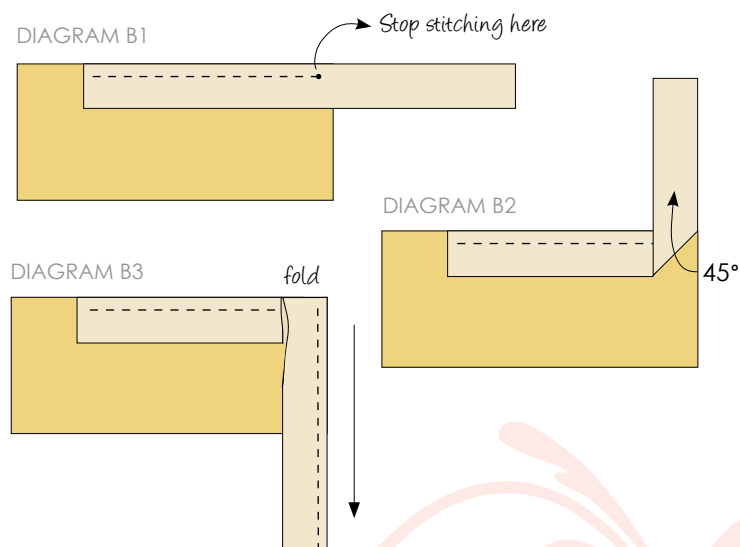
*Feel the difference*

For wholesale visit:

[artgalleryfabrics.com](http://artgalleryfabrics.com)

*NOTE: While all possible care has been taken to ensure the accuracy of this pattern, we are not responsible for printing errors or the way in which individual work varies. Please read instructions carefully before starting the construction of this quilt. If desired, wash and iron your fabrics before starting to cut.*

© 2011 Courtesy of Art Gallery Quilts LLC.  
All Rights Reserved.



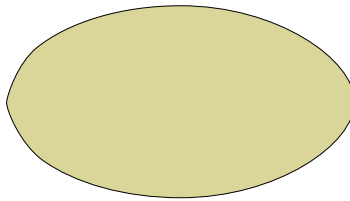
**CONGRATULATIONS!**

# Flirty

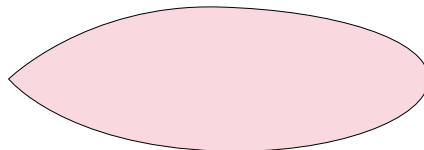


REAL SIZE TULIP APPLIQUÉ TEMPLATES

---



short petal



long petal



[patbravo.com](http://patbravo.com)

[artgalleryfabrics.com](http://artgalleryfabrics.com)

