

Kaleidoscopic

{ FEATURING HYPERREAL GARDEN COLLECTION }



Art Gallery
FABRICS

FREE PROJECT SHEET
DESIGNED WITH LOVE BY Pat Bravo



QUILT DESIGNED WITH LOVE BY *Pat Bravo*

KALEIDOSCOPIC

FINISHED SIZE: 86" x 90"

To download the instructions for this pattern visit

artgalleryfabrics.com

patbravo.com



COLOR OPTION



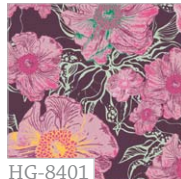
HYPERREAL GARDEN



PETALS



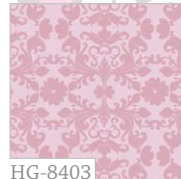
HG-8400 Flowershock Apricot



HG-8401 Lush Foliage Plum



HG-8402 Euphoria Boysenberry



HG-8403 Mirage Rose



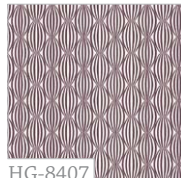
HG-8404 Radiant Bouquet Ruby



HG-8405 Op Art Washed



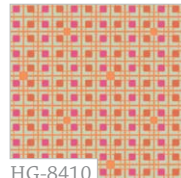
HG-8406 Fantasy Roads Red



HG-8407 Illusion Warm



HG-8409 Labyrinth Lilac

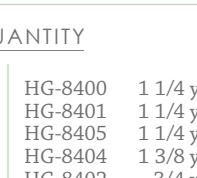


HG-8410 Labyrinth Candy



HG-8409 5/8 yd.

HG-8406 1 1/4 yd.



HG-8400 1 1/4 yd.

HG-8401 1 1/4 yd.

HG-8405 1 1/4 yd.

HG-8404 1 3/8 yd.

HG-8402 3/4 yd.

Backing 5 7/8 yd.

KIT QUANTITY

FOREST



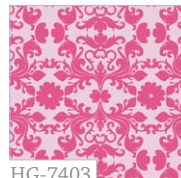
HG-7400 Flowershock Mauve



HG-7401 Lush Foliage Blanc



HG-7402 Euphoria Juneberry



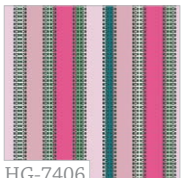
HG-7403 Mirage Fuchsia



HG-7404 Radiant Bouquet Emerald



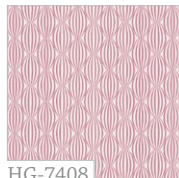
HG-7405 Op Art Intense



HG-7406 Fantasy Roads Pink



HG-7407 Illusion Fresh



HG-7408 Illusion Cashmere



HG-7409 Labyrinth Flamingo



HG-7409 1 yd.

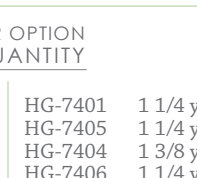
HG-8407 1/2 yd.

HG-7407 3/4 yd.

HG-7408 1 1/8 yd.

HG-7402 3/4 yd.

HG-7400 1 1/4 yd.



HG-7401 1 1/4 yd.

HG-7405 1 1/4 yd.

HG-7404 1 3/8 yd.

HG-7406 1 1/4 yd.

Backing 5 7/8 yd.

COLOR OPTION KIT QUANTITY





QUILT DESIGNED WITH LOVE
BY PAT BRAVO

KALEIDOSCOPIC

Featuring **HYPERREAL GARDEN** COLLECTION

FINISHED SIZE: 86" × 90"

FABRIC REQUIREMENTS

Fabric A	HG-8409	5/8 yd.
Fabric B	HG-8407	3/4 yd.
Fabric C	HG-8410	3/4 yd.
Fabric D	HG-7408	7/8 yd.
Fabric E	HG-7409	1/2 yd.
Fabric F	HG-8406	1 1/4 yd.
Fabric G	HG-8400	1 1/4 yd.
Fabric H	HG-8401	1 1/4 yd.
Fabric I	HG-8405	1 1/4 yd.
Fabric J	HG-8404	1 3/8 yd.
Fabric K	HG-8402	3/4 yd.

Backing Fabric

HG-8406 5 7/8 yd. (suggested)

Binding Fabric

HG-8407 (Fabric **B**) (included)

COLOR OPTION

Fabric A	HG-7409	1 yd.
Fabric B	HG-8407	1/2 yd.
Fabric D	HG-7407	3/4 yd.
Fabric C	HG-7408	1 1/8 yd.
Fabric K	HG-7402	3/4 yd.
Fabric G	HG-7400	1 1/4 yd.
Fabric H	HG-7401	1 1/4 yd.
Fabric I	HG-7405	1 1/4 yd.
Fabric J	HG-7404	1 3/8 yd.
Fabric F	HG-7406	1 1/4 yd.

Please take special care in the cutting instructions because for the **COLOR OPTION** version, fabrics A&E merge. Please refer to the **COLOR OPTION** image for fabric placement.

NOTIONS

- Ruler 6" × 24"
- Rotary cutter with new blade
- Zipper plastic bags
- Marking pencils (light & dark)



FABRICS DESIGNED BY PAT BRAVO
FOR **ART GALLERY FABRICS**



This quilt consists of 28 strips surrounded by two borders. The strips are either 4 inches wide finished or 2 inches wide finished. The fabrics combine to form diamonds floating on diamonds.

All the strips are constructed in the same manner.

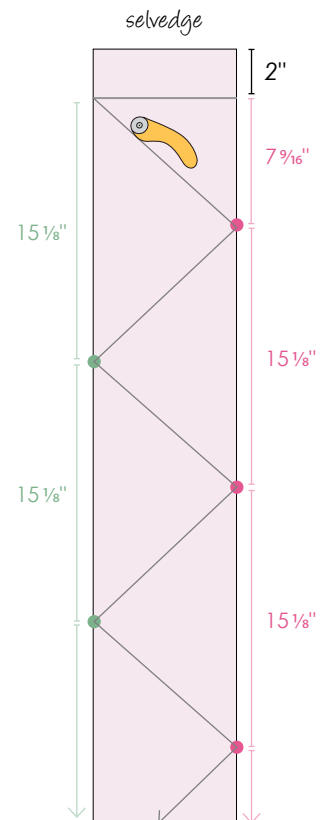


CUTTING DIRECTIONS

All strips are cut width of fabric (WOF).

LARGE TRIANGLES (cut strips WOF 4 1/2" wide)

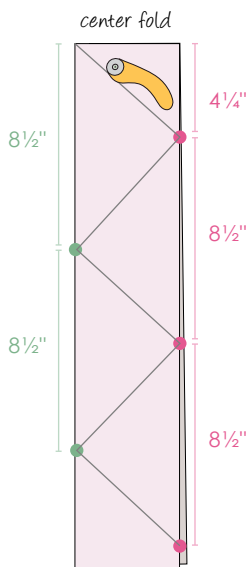
- To subcut into triangles, open each strip to one layer. Draw a line 2" from one selvage edge.
- On one cut edge measure along the edge from the marked line 7 9/16" (halfway between 7 1/2" and 7 5/8") and mark the cut edge. Repeat marking that edge at 15 1/8" intervals the length of the fabric.
- On the opposite cut edge measure from the originally drawn line and mark that edge in 15 1/8" intervals the length of the fabric.
- Using a rotary cutter cut from the edge of the fabric strip starting at the drawn line diagonally across the strip to the first marked spot.
- The second cut is from that exact point diagonally across the strip to the next marked point on the opposite side of the fabric.
- Continue cutting diagonally the length of the strip, producing 4 large triangles and 2 end pieces. The ends will be used as half triangles for the dropped rows. As you finish cutting each fabric, place in a marked zipper bag.



SMALL TRIANGLES (cut strips WOF 2½" wide)

Before cutting the small triangles, press each fabric with a sharply pressed center fold. Then cut all strips 2½" wide.

- From the fold, measure up one side 4¼" and mark.
- From that mark, on that cut side of the fabric, measure in 8½" increments to near the end of the fabric.
- On the opposite cut edge, from the folded edge measure in 8½" increments to near the end of the fabric.
- With the rotary cutter, cut from the folded edge to the opposite diagonal mark, continuing as with the large triangles, the length of the strip.



Each fabric should be cut into the following number of strips and subcut into the following number of triangles and then each stored in a marked zipper bag:

Fabric A

Cut 3 strips (4½" wide), subcut into 12 large triangles

Fabric G

Cut 5 strips (4½" wide), subcut into 20 large triangles and 8 large half triangles

Cut 7 strips (2½" wide), subcut into 48 small triangles

Fabric B

Cut 7 strips (2½" wide), subcut into 44 small triangles and 8 small half triangles

Fabric H

Cut 6 strips (4½" wide), subcut into 24 large triangles

Cut 7 strips (2½" wide), subcut into 48 small triangles

Fabric C

Cut 10 strips (2½" wide), subcut into 68 small triangles and 8 small half triangles

Fabric I

Cut 5 strips (4½" wide), subcut into 20 large triangles and 8 large half triangles

Cut 7 strips (2½" wide), subcut into 48 small triangles

Fabric D

Cut 7 strips (2½" wide), subcut into 44 small triangles and 8 small half triangles

Fabric J

Cut 6 strips (4½" wide), subcut into 24 large triangles

Cut 7 strips (2½" wide), subcut into 44 small triangles and 8 small half triangles

Fabric K

Cut 3 strips (4½" wide), subcut into 10 large triangles and 4 large half triangles

Cut 4 strips (2½" wide), subcut into 22 small triangles and 4 small half triangles

Fabric E

Cut 7 strips (2½" wide), subcut into 48 small triangles

FOR BORDERS CUT

Inner Border

Cut 9 (nine) 1½" strips WOF from fabric D and sew end to end.

Outer Border

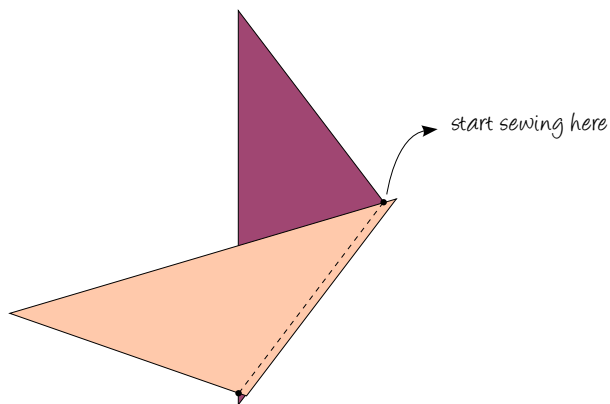
Cut 4 (four) 4½" strips WOF from fabric F and sew end to end.



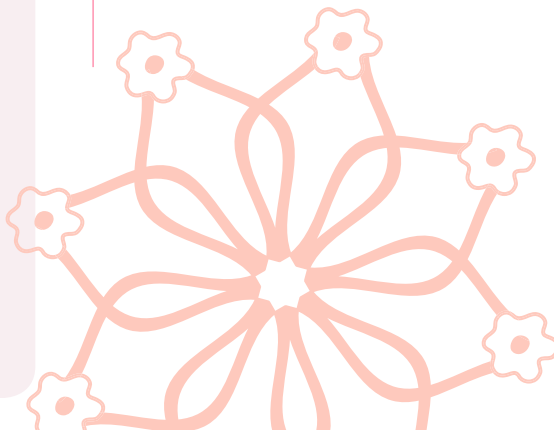
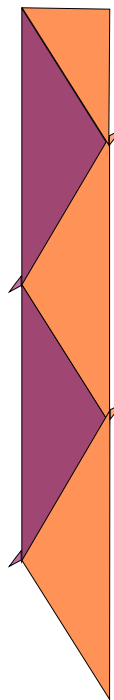
ROW CONSTRUCTION

All strips are sewn in the same manner. Follow the fabric placement diagram located on the next page.

- To join two triangles, position one on top of the other (right sides together) as shown on diagram.
- Start sewing at the exact intersection of the two fabrics with a ¼" seam allowance. Press seams open.
- You will notice that the tip of the top triangle shows over the edge of the bottom triangle. These are called "dog ears". It is normal when you sew triangles and you will trim them out later.



- Continue adding triangles in the same way you did in previous step. Make sure you follow the color fabric sequence on the following page and the rows fabric combination guideline.



KALEIDOSCOPIC

FABRIC PLACEMENT DIAGRAM



patbravo.com

artgalleryfabrics.com



ROWS FABRIC COMBINATIONS

ROW 1 is made of

Fabric A: 6 large triangles

Fabric G: 5 large triangles & 2 large half triangles

ROWS 2 & 3 are each made of

Fabric G: 12 small triangles

Fabric B: 11 small triangles & 2 small half triangles

ROW 4 is made of

Fabric H: 6 large triangles

Fabric G: 5 large triangles & 2 large half triangles

ROWS 5 & 6 are each made of

Fabric H: 12 small triangles

Fabric C: 11 small triangles & 2 small half triangles

ROW 7 is made of

Fabric H: 6 large triangles

Fabric I: 5 large triangles & 2 large half triangles

ROWS 8 & 9 are each made of

Fabric D: 12 small triangles

Fabric I: 11 small triangles & 2 small half triangles

ROW 10 is made of

Fabric J: 6 large triangles

Fabric I: 5 large triangles & 2 large half triangles

ROWS 11 & 12 are each made of

Fabric E: 12 small triangles

Fabric J: 11 small triangles & 2 small half triangles

ROW 13 is made of

Fabric J: 6 large triangles

Fabric K: 5 large triangles & 2 large half triangles

ROWS 14 & 15 are each made of

Fabric C: 12 small triangles

Fabric K: 11 small triangles & 2 small half triangles

ROW 16 is made of

Fabric J: 6 large triangles

Fabric K: 5 large triangles & 2 large half triangles

ROWS 17 & 18 are each made of

Fabric E: 12 small triangles

Fabric J: 11 small triangles & 2 small half triangles

ROW 19 is made of

Fabric J: 6 large triangles

Fabric I: 5 large triangles & 2 large half triangles

ROWS 20 & 21 are each made of

Fabric I: 12 small triangles

Fabric D: 11 small triangles & 2 small half triangles

ROW 22 is made of

Fabric H: 6 large triangles

Fabric I: 5 large triangles & 2 large half triangles

ROWS 23 & 24 are each made of

Fabric H: 12 small triangles

Fabric C: 11 small triangles & 2 small half triangles

ROW 25 is made of

Fabric H: 6 large triangles

Fabric G: 5 large triangles & 2 large half triangles

Rows 26 & 27 are each made of

Fabric G: 12 small triangles

Fabric B: 11 small triangles & 2 small half triangles

Row 28 is made of

Fabric A: 6 large triangles

Fabric G: 5 large triangles & 2 large half triangles



ASSEMBLING THE TOP

- Sew the rows together with vertical seams, matching points.
- The half triangles are then trimmed to $\frac{1}{4}$ " at the top and lower edge of the quilt center. This squares the quilt for the borders.
- Add inner border and outer borders.



BORDERS ASSEMBLY

Sew all rights sides together with $\frac{1}{4}$ " seam allowance. Press open.

- Align & sew the **fabric D** strip along the left side of the quilt center. Press open. Trim the excess fabric. Sew the remaining of the **fabric D** strip on the opposite side (right). Trim the excess.
- Repeat with top & bottom edges.
- Follow same previous steps for the outer border, using **fabric F** strip.



QUILT ASSEMBLY

- Place BACKING FABRIC on a large surface wrong side up. Stretch it with masking tape against that surface.
- Place BATTING on top of backing fabric.
- Place TOP on top of the batting with right side facing up. Smooth away wrinkles using your hands.
- Pin all layers together and baste with basting thread, using long stitches. You can also use safety pins to join the layers.
- Machine or hand quilt starting at the center and working towards the corners. Remember that quilting motives are a matter of personal preference. Have fun choosing yours!
- After you finished, trim excess of any fabric or batting, squaring the quilt to proceed to bind it.

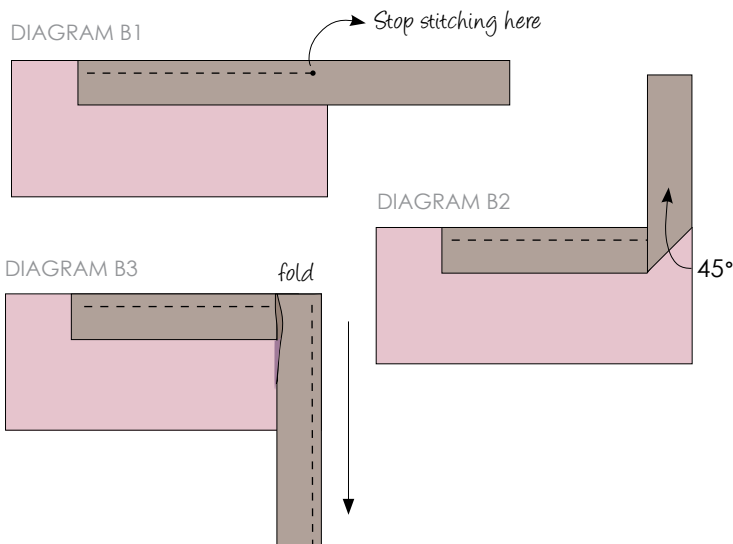




BINDING

Sew all rights sides together.

- Cut enough strips $1\frac{1}{2}$ " wide by the width of the fabric **B** to make a final strip 364" long. Start sewing the binding strip in the middle of one of the sides of the quilt, placing the strip right side down and leaving an approximated 5" tail. Sew with $\frac{1}{4}$ " seam allowance (using straight stitch), aligning the strip's raw edge with the quilt top's raw edge.
- Stop stitching $\frac{1}{4}$ " before the edge of the quilt (DIAGRAM B 1). Clip the threads. Remove the quilt from under the machine presser foot. Fold the strip in a motion of 45° and upward, pressing with your fingers (DIAGRAM B2). Hold this fold with your finger, bring the strip down in line with the next edge, making a horizontal fold that aligns with the top edge of the quilt (DIAGRAM B3). Start sewing at $\frac{1}{4}$ " of the border, stitching all the layers. Do the same in the four corners of the quilt.
- Stop stitching before you reach the last 5 or 6 inches. Cut the threads and remove the quilt from under the machine presser foot. Lay the loose ends of the binding flat along the quilt edge, folding the ends back on themselves where they meet. Press them together to form a crease. Using this crease as the stitching line, sew the two open ends of the binding with right sides together (you can help yourself marking with a pencil if the crease is difficult to see).
- Trim seam to $\frac{1}{4}$ " and press open. Complete the sewing. Turn binding to back of the quilt, turn raw edge inside and stitch by hand using blind stitch.



CONGRATULATIONS!



To see more patterns, fabrics and lots of inspiration visit:

patbravo.com



Feel the difference

For wholesale visit:

artgalleryfabrics.com

NOTE: While all possible care has been taken to ensure the accuracy of this pattern, we are not responsible for printing errors or the way in which individual work varies. Please read instructions carefully before starting the construction of this quilt. If desired, wash and iron your fabrics before starting to cut.

© 2011 Courtesy of Art Gallery Quilts LLC. All Rights Reserved.